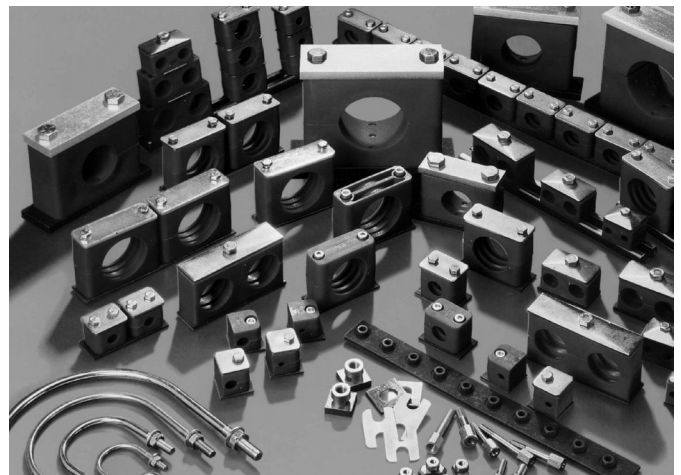


# SECTION 16

## Pipe Clamps

<b><i>Make</i></b>	<b><i>Model</i></b>	<b><i>Page</i></b>
<b>AEGI</b>	Single Pipe Clamps - Assemblies	16.01
<b>AEGI</b>	Single Pipe Clamps - Components	16.02
<b>AEGI</b>	Single Pipe Clamps - Stacking & Multiple	16.03
<b>AEGI</b>	Double Pipe Clamps - Assemblies	16.04
<b>AEGI</b>	Double Pipe Clamps - Components	16.05
<b>AEGI</b>	Double Pipe Clamps - Stacking & Multiple	16.06

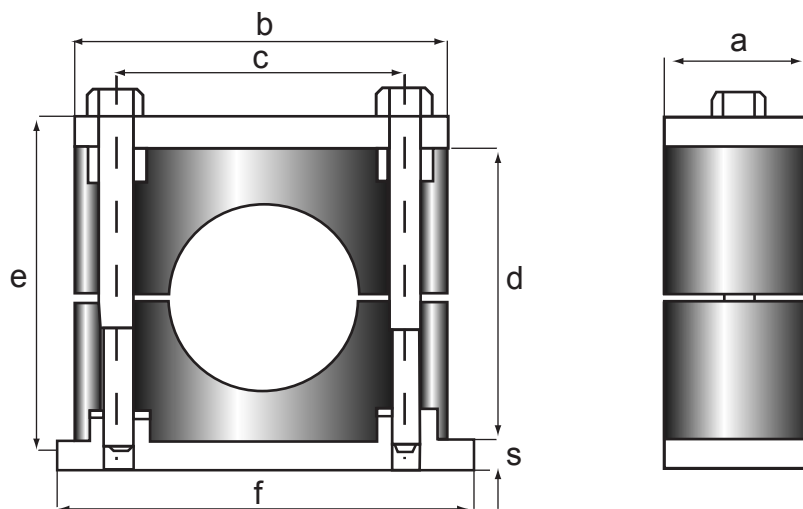




# Single Pipe Clamps Assemblies

## Single Clamp Assemblies

Group	Size mm	Stock No.	Description	a	b	c	d	f	s	e	List Price
1	6	A106	Group 1 Single Clamp Assembly	30	34	20	27	41	3	M6x30	
	6.4	A1064									
	8	A108									
	10	A110									
	12	A112									
2	12.7	A2127	Group 2 Single Clamp Assembly	30	40	26	33	47	3	M6x35	
	14	A214									
	15	A215									
	16	A216									
	18	A218									
3	19	A319	Group 3 Single Clamp Assembly	30	48	33	35	54	3	M6x40	
	20	A320									
	22	A322									
	25	A325									
	25.4	A3254									
4	28	A428	Group 4 Single Clamp Assembly	30	57	40	42	61	3	M6x45	
	30	A430									
5	32	A532	Group 5 Single Clamp Assembly	30	38	52	58	74	3	M6x60	
	35	A535									
	38	A538									
	40	A540									
	42	A542									
	45	A545									
6	44.5	A6445	Group 6 Single Clamp Assembly	30	86	66	66	88	3	M6x70	
	48.3	A6483									
	50.8	A6508									





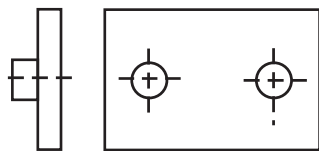
# Single Pipe Clamps

## Jaws & Components

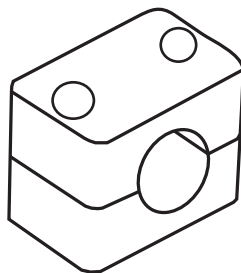


### Single Clamp Components

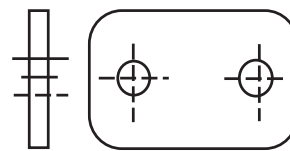
Group	Size mm	Jaws	List Price (2 pcs)	Base Plate	List Price	Top Plate	List Price	Bolt (2 Req)	List Price (ea)
1	6	A106C	\$ 0.90	APIN1	\$ 1.20	APS1	\$ 0.45	AVTE1	
	6.4	A1064C							
	8	A108C							
	10	A110C							
	12	A112C							
2	12.7	A2127C	\$ 1.10	APIN2	\$ 1.30	APS2	\$ 0.65	AVTE2	
	14	A214C							
	15	A215C							
	16	A216C							
	18	A218C							
3	19	A319C	\$ 1.20	APIN3	\$ 1.35	APS3	\$ 0.75	AVTE3	
	20	A320C							
	22	A322C							
	25	A325C							
	25.4	A3254C							
4	28	A428C	\$ 1.50	APIN4	\$ 1.40	APS4	\$ 0.80	AVTE4	
	30	A430C							
5	32	A532C	\$ 2.20	APIN5	\$ 1.70	APS5	\$ 0.95	AVTE5	
	35	A535C							
	38	A538C							
	40	A540C							
	42	A542C							
6	45	A545C	\$ 3.10	APIN6	\$ 2.15	APS6	\$ 0.95	AVTE6	
	44.5	A6445C							
	48.3	A6483C							
	50.8	A6508C							



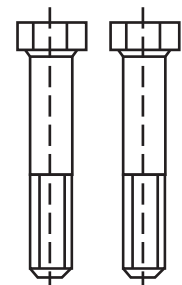
APIN\*  
Base Plate



A\*\*\*C  
Polypropylene Jaws



APS\*  
Top Plate



AVTE\*  
Bolt



# Single Pipe Clamps

## Stacking & Multiple Components

### Single Clamp Components

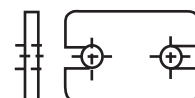
Group	Size mm	Multiple Bases				Stackable Components			
		Double Base Plate	List Price	Multiple Base Plate	List Price	Stacking Bolt (2 Req)	List Price (ea)	Intermediate Locking Plate	List Price
1	6	APID1	\$ 2.80	APIM1	\$ 16.50	AVTEA1	\$ 2.20	APMRS1	
	6.4								
	8								
	10								
	12								
2	12.7	APID2	\$ 2.90	APIM2	\$ 16.60	AVTEA2	\$ 2.30	APMRS2	
	14								
	15								
	16								
	18								
3	19	APID3	\$ 3.60	APIM3	\$ 17.70	AVTEA3	\$ 2.40	APMRS3	
	20								
	22								
	25								
	25.4								
4	28	APID4	\$ 3.70	APIM4	\$ 9.70	AVTEA4	\$ 2.40	APMRS4	
	30								
5	32	APID5	\$ 3.80	APIM5	\$ 12.00	AVTEA5	\$ 2.80	APMRS5	
	35								
	38								
	40								
	42								
6	45	APID6	\$ 4.30	APIM6	\$ 14.20	AVTEA6	\$ 2.90	APMRS6	
	44.5								
	48.3								
	50.8								



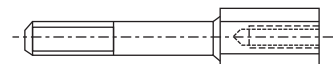
APID\*  
Double Base



APIM\*  
Multiple Base



APMRS\* Intermediate  
Locking Plate



AVTEA\*  
Stacking Bolt

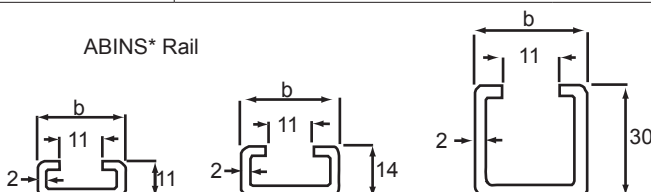
### 2 Metre Rail

Stock No.	Description	Length	Rail Nuts	b	h	List Price
ABINS1	Single/Double Clamp Rail	2 metres	ADES(D)	28	11	
ABINS2	Single/Double Clamp Rail	2 metres	ADES(D)	28	14	
ABINS3	Single/Double Clamp Rail	2 metres	ADES(D)	28	30	

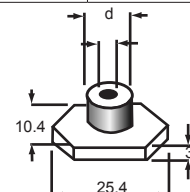
### Rail Nuts

Stock No.	Description	Suits Rail	M	Ød (mm)	List Price
ADES	All Single & Double Group 1 Hexagonal Rail Nut	ABINS*	M6	12	
ADESD	Double Group 2-5 Hexagonal Rail Nut	ABINS*	M8	14	

ABINS\* Rail



ADES\*  
Rail Nut

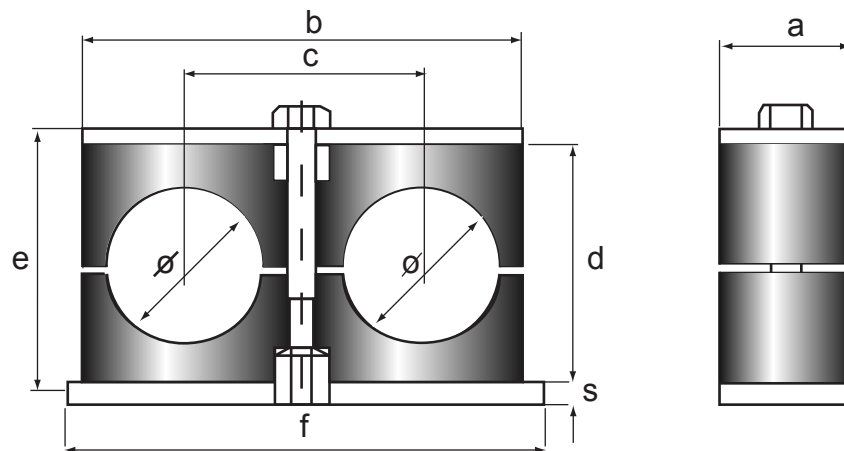




# Double Pipe Clamps Assemblies

## Double Clamp Assemblies

Group	Size mm	Stock No.	Description	a	b	c	d	f	s	e	List Price
1	6	AD106	Group 1 Double Clamp Assembly	30	37	20	25	37	3	M6x30	
	6.4	AD1064									
	8	AD108									
	10	AD110									
	12	AD112									
2	12.7	AD2127	Group 2 Double Clamp Assembly	30	53	29	26	55	5	M8x35	
	14	AD214									
	15	AD215									
	16	AD216									
	18	AD218									
3	19	AD319	Group 3 Double Clamp Assembly	30	67	36	37	70	5	M8x45	
	20	AD320									
	22	AD322									
	25	AD325									
	25.4	AD3254									
4	28	AD428	Group 4 Double Clamp Assembly	30	82	45	42	85	5	M8x50	
	30	AD430									
5	32	AD532	Group 5 Double Clamp Assembly	30	106	56	54	110	5	M8x60	
	35	AD535									
	38	AD538									
	40	AD540									
	42	AD542									



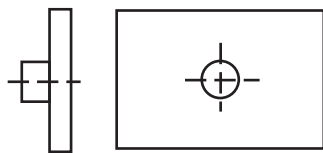


# Double Pipe Clamps

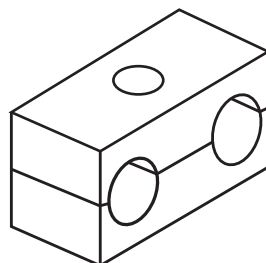
## Jaws & Components

### Double Clamp Components

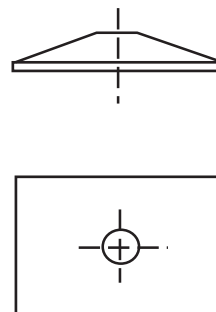
Group	Size mm	Jaws	List Price (2 pcs)	Base Plate	List Price	Top Plate	List Price	Bolt (1 Req)	List Price (ea)
1	6	AD10606C	\$ 1.20	ADPIN1	\$ 1.40	ADPS1	\$ 0.60	AVTE2	
	6.4	AD1064064C							
	8	AD10808C							
	10	AD11010C							
	12	AD11212C							
2	12.7	AD2127127C	\$ 1.50	ADPIN2	\$ 1.80	ADPS2	\$ 0.80	ADVTE2	
	14	AD21414C							
	15	AD21515C							
	16	AD21616C							
	18	AD21818C							
3	19	AD31919C	\$ 1.70	ADPIN3	\$ 1.90	ADPS3	\$ 0.95	ADVTE3	
	20	AD32020C							
	22	AD32222C							
	25	AD32525C							
	25.4	AD3254254C							
4	28	AD42828C	\$ 2.10	ADPIN4	\$ 2.10	ADPS4	\$ 1.05	ADVTE4	
	30	AD43030C							
5	32	AD53232C	\$ 3.30	ADPIN5	\$ 2.10	ADPS5	\$ 1.10	ADVTE5	
	35	AD53535C							
	38	AD53838C							
	40	AD54040C							
	42	AD54242C							



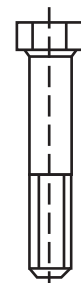
ADPIN\*  
Base Plate



AD\*\*\*C  
Polypropylene Jaws



ADPS\*  
Top Plate



ADVTE\*  
Bolt

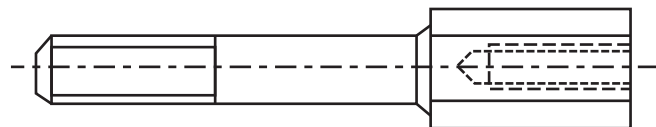


# Double Pipe Clamps

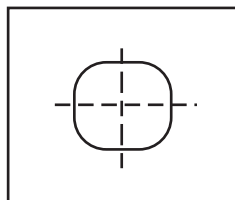
## Stacking Components

### Double Clamp Components

		Stackable Components			
Group	Size mm	Stacking Bolt (1 Req)	List Price (ea)	Intermediate Locking Plate	List Price
1	6	ADVTEA1	\$ 2.10	APMRSD1	
	6.4				
	8				
	10				
	12				
2	12.7	ADVTEA2	\$ 2.10	APMRSD2	
	14				
	15				
	16				
	18				
3	19	ADVTEA3	\$ 2.30	APMRSD2	
	20				
	22				
	25				
4	25.4	ADVTEA4	\$ 2.30	APMRSD2	
	28				
5	30	ADVTEA5	\$ 2.30	APMRSD2	
	32				
	35				
	38				
	40				
	42				



ADVTEA\*  
Stacking Bolt



APMRSD\* Intermediate  
Locking Plate