

# SECTION 13

## Gauges & Accessories

<b><i>Make</i></b>	<b><i>Model</i></b>	<b><i>Page</i></b>
<b>Fimet</b>	MAR Series Pressure Gauges	13.01
<b>Fimet</b>	MAF Series Pressure Gauges	13.02
<b>OMT</b>	Filter Indicators	13.03
<b>FT Tognella</b>	Gauge Adaptors	13.04
<b>FT Tognella</b>	Gauge Isolators	13.05
<b>Miselli</b>	Level Sight Glasses	13.06
<b>Miselli</b>	XL Series Level Gauges	13.07
<b>OMT</b>	LV Level Gauges	13.07
<b>OMT</b>	LT Series Level Gauges	13.08
<b>OMT</b>	L Series Electric Level Gauges	13.09
<b>Delta</b>	PS Series Pressure Switches	13.10
<b>OMT</b>	Thermostat Switch	13.10
<b>LAYHER</b>	600 Series Pressure Switches	13.11
<b>FT</b>	FTIPN Series Pressure Switches	13.12
<b>Fimet</b>	SPT Series Pressure Transducers	13.13





# MAR Series Pressure Gauges



## 63mm Glycerine Filled - Bottom Entry Dual Scale

Stock No.	Description	Face Dia.	Connection	Pressure Scales		List Price
MAR63001	Pressure Gauge	63mm	1/4" BSPP	0-1 BAR	0-14 PSI	
MAR63004	Pressure Gauge	63mm	1/4" BSPP	0-4 BAR	0-58 PSI	
MAR63010	Pressure Gauge	63mm	1/4" BSPP	0-10 BAR	0-145 PSI	
MAR63025	Pressure Gauge	63mm	1/4" BSPP	0-25 BAR	0-360 PSI	
MAR63040	Pressure Gauge	63mm	1/4" BSPP	0-40 BAR	0-560 PSI	
MAR63060	Pressure Gauge	63mm	1/4" BSPP	0-60 BAR	0-870 PSI	
MAR63100	Pressure Gauge	63mm	1/4" BSPP	0-100 BAR	0-1450 PSI	
MAR63160	Pressure Gauge	63mm	1/4" BSPP	0-160 BAR	0-2300 PSI	
MAR63250	Pressure Gauge	63mm	1/4" BSPP	0-250 BAR	0-3600 PSI	
MAR63315	Pressure Gauge	63mm	1/4" BSPP	0-315 BAR	0-4570 PSI	
MAR63400	Pressure Gauge	63mm	1/4" BSPP	0-400 BAR	0-5700 PSI	
MAR63600	Pressure Gauge	63mm	1/4" BSPP	0-600 BAR	0-8700 PSI	
MAR631000	Pressure Gauge	63mm	1/4" BSPP	0-1000 BAR	0-14500 PSI	

### Glycerine filled pressure gauge 63mm Ø bottom entry.

Case: Stainless steel

Ring: Stainless Steel

Window: Vedral

Sensing Element: Copper alloy bourdon tube

Connection: Brass bottom 1/4" BSPP with spigot

Welding: Tin alloy

Working Temperature: -10°C to +80°C

Amplifying Movement: Brass for precision clockwork

Damping Element: Glycerine 98%



## 100mm Glycerine Filled - Bottom Entry Dual Scale

Stock No.	Description	Face Dia.	Connection	Pressure Scales		List Price
MAR100010	Pressure Gauge	100mm	1/2" BSPP	0-10 BAR	0-145 PSI	
MAR100025	Pressure Gauge	100mm	1/2" BSPP	0-25 BAR	0-360 PSI	
MAR100060	Pressure Gauge	100mm	1/2" BSPP	0-60 BAR	0-870 PSI	
MAR100100	Pressure Gauge	100mm	1/2" BSPP	0-100 BAR	0-1450 PSI	
MAR100160	Pressure Gauge	100mm	1/2" BSPP	0-160 BAR	0-2300 PSI	
MAR100250	Pressure Gauge	100mm	1/2" BSPP	0-250 BAR	0-3600 PSI	
MAR100315	Pressure Gauge	100mm	1/2" BSPP	0-315 BAR	0-4570 PSI	
MAR100400	Pressure Gauge	100mm	1/2" BSPP	0-400 BAR	0-5700 PSI	
MAR100600	Pressure Gauge	100mm	1/2" BSPP	0-600 BAR	0-8700 PSI	

### Glycerine filled pressure gauge 100mm Ø bottom entry.

Case: Stainless steel

Ring: Stainless Steel

Window: Vedral

Protection: IP 55

Sensing Element: Copper alloy bourdon tube

Connection: Brass bottom 1/2" BSPP

Dial: Aluminium

Pointer: Black aluminium

Welding: Tin alloy

Working Temperature: -10°C to +80°C

Amplifying Movement: Brass for precision clockwork

Damping Element: Glycerine 98%



# MAF Series Pressure Gauges



## 63mm Glycerine Filled - Rear Entry Dual Scale

Stock No.	Description	Face Dia.	Connection	Pressure Scales		List Price
MAF63010	Pressure Gauge	63mm	1/4" BSPP	0-10 BAR	0-145 PSI	
MAF63025	Pressure Gauge	63mm	1/4" BSPP	0-25 BAR	0-360 PSI	
MAF63060	Pressure Gauge	63mm	1/4" BSPP	0-60 BAR	0-870 PSI	
MAF63100	Pressure Gauge	63mm	1/4" BSPP	0-100 BAR	0-1450 PSI	
MAF63160	Pressure Gauge	63mm	1/4" BSPP	0-160 BAR	0-2300 PSI	
MAF63250	Pressure Gauge	63mm	1/4" BSPP	0-250 BAR	0-3600 PSI	
MAF63315	Pressure Gauge	63mm	1/4" BSPP	0-315 BAR	0-4570 PSI	
MAF63400	Pressure Gauge	63mm	1/4" BSPP	0-400 BAR	0-5700 PSI	
MAF63600	Pressure Gauge	63mm	1/4" BSPP	0-600 BAR	0-8700 PSI	

### Glycerine filled pressure gauge 63mm Ø back entry.

Case: Stainless steel

Ring: Stainless Steel

Window: Vedral

Sensing Element: Copper alloy bourdon tube

Connection: Brass bottom 1/4" BSPP with spigot

Welding: Tin alloy

Working Temperature: -10°C to +80°C

Amplifying Movement: Brass for precision clockwork

Damping Element: Glycerine 98%

Front Flange: Stainless steel with 3 holes for panel mounting



## 100mm Glycerine Filled - Rear Entry Dual Scale

Stock No.	Description	Face Dia.	Connection	Pressure Scales		List Price
MAF100010	Pressure Gauge	100mm	1/2" BSPP	0-10 BAR	0-145 PSI	
MAF100025	Pressure Gauge	100mm	1/2" BSPP	0-25 BAR	0-360 PSI	
MAF100060	Pressure Gauge	100mm	1/2" BSPP	0-60 BAR	0-870 PSI	
MAF100100	Pressure Gauge	100mm	1/2" BSPP	0-100 BAR	0-1450 PSI	
MAF100160	Pressure Gauge	100mm	1/2" BSPP	0-160 BAR	0-2300 PSI	
MAF100250	Pressure Gauge	100mm	1/2" BSPP	0-250 BAR	0-3600 PSI	
MAF100400	Pressure Gauge	100mm	1/2" BSPP	0-400 BAR	0-5700 PSI	
MAF100600	Pressure Gauge	100mm	1/2" BSPP	0-600 BAR	0-8700 PSI	

### Glycerine filled pressure gauge 100mm Ø bottom entry.

Case: Stainless steel

Ring: Stainless Steel

Window: Vedral

Protection: IP 55

Sensing Element: Copper alloy bourdon tube

Connection: Brass bottom 1/2" BSPP

Dial: Aluminium

Pointer: Black aluminium

Welding: Tin alloy

Working Temperature: -10°C to +80°C

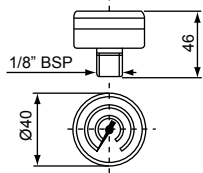
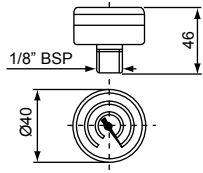
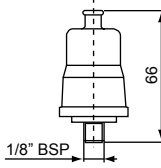
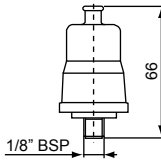
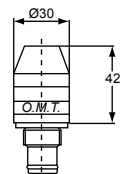
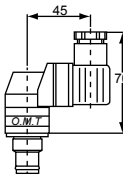
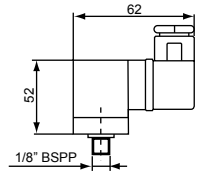
Amplifying Movement: Brass for precision clockwork

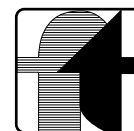
Damping Element: Glycerine 98%



# OMTI Series Filter Indicators

## Filter Indicators

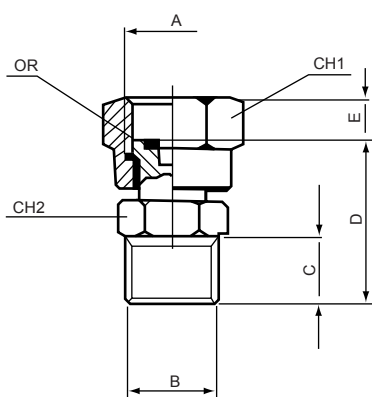
Stock No.	Description		Pressure Range	List Price
OMTI-B	Dry Pressure Gauge - Return Line		0-10 BAR	
OMTI-C	Dry Vacuum Gauge - Suction Line		0-76 cm Hg	
OMTI-D	Pressure Switch with N.O. Electrical Contacts		0-2 BAR	
OMTI-E	Pressure Switch with N.C. Electrical Contacts		0-2 BAR	
DV500	Visual Differential Indicator - High Pressure		5 BAR $\pm$ 0.2 bar	
DE500	Electrical Differential Indicator - High Pressure		5 BAR $\pm$ 0.2 bar	
OMTI-H	Membrane Pressure Switch		1.3 BAR $\pm$ 0.2 bar	



# FT299 Gauge Adaptors

## Gauge Adaptors

Stock No.	Description	Dimensions (mm)							List Price
		A	B	C	D	E	CH1	CH2	
FT29944	Male x Female Gauge Adaptor	1/4" BSPP	1/4" BSPT	12	27	9.5	18	17	
FT29942	Male x Female Gauge Adaptor	1/4" BSPP	1/2" BSPT	16	31	9.5	18	22	
FT29924	Male x Female Gauge Adaptor	1/2" BSPP	1/4" BSPT	12	31	11	27	22	
FT29922	Male x Female Gauge Adaptor	1/2" BSPP	1/2" BSPT	16	34	11	27	22	
FT29943	Male x Female Gauge Adaptor	1/4" BSPP	3/8" BSPT	15	31	11	19	19	



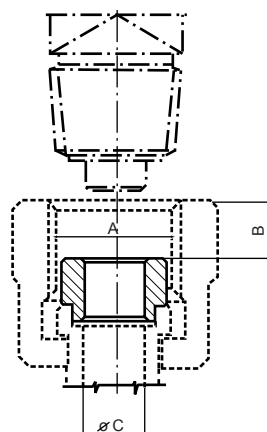
### Gauge Adaptors

Connectors FT299 are a swivel fitting which allows correct orientation of a pressure gauge.  
Sealing between the adaptor and gauge is by a static o-ring, pressure shocks are partially dampened by the in-built orifice.

**Maximum working pressure is 400 BAR.**

## Copper Plug Gaskets

Stock No.	Description	Suits	Dimensions (mm)			List Price
			A	B	C	
FT120114	Copper Gasket	1/4" BSPT Gauge Stem	1/4" G	6.5	5.5	
FT120112	Copper Gasket	1/2" BSPT Gauge Stem	1/2" G	8	6.5	



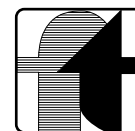
### Copper Plug Nuts

When fitting a tapered stem pressure gauge or nipple to:

a: Gauge Adaptor FT299

b: Gauge Isolators FT290 & FT291

Copper Plug Nuts FT1201 must be used in lieu of standard o-ring.



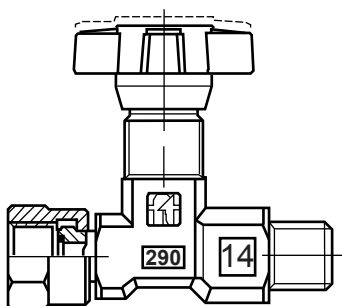
# FT29\*

## Gauge Isolators

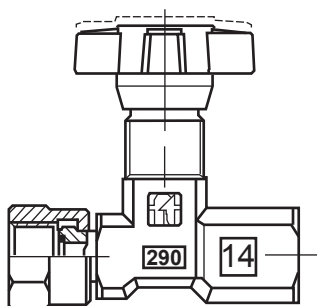
### Gauge Isolators

Stock No.	Description	Threads	List Price
FT290	Gauge Isolator - Needle Valve	1/4" BSPT Female x 1/4" BSPT Male	
FT290-01	Gauge Isolator - Needle Valve	1/4" BSPT Female x 1/4" BSPT Female	
FT291	Gauge Isolator - Needle Valve	1/4" BSPT Female x 1/4" BSPT Male	
FT292	Gauge Isolator - Push Button (Lockable 'ON')	1/4" BSPT F/M x 1/4" BSPT F/M x 1/4" BSPT F/M	
FT292NL	Gauge Isolator - Push Button (Non-Lockable)	1/4" BSPT F/M x 1/4" BSPT F/M x 1/4" BSPT F/M	

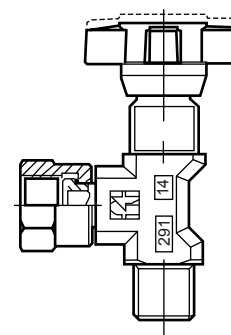
FT290



FT290-01



FT291



The **FT290** (180° - in line) and **FT291** isolator needle valves (90° - angle) are used to isolate and protect pressure gauges in a circuit from pressure surges and spikes normally present in hydraulic systems. The design of the needle valve eliminates the pressure shock to the gauge on opening by permitting only a gentle bleed of fluid into the gauge.

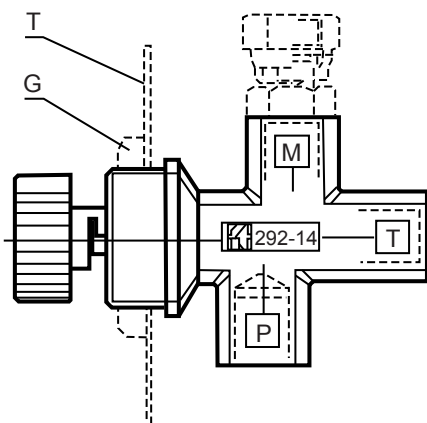
The swivel gauge connection with its unique sealing arrangement allows the gauge to be aligned to the optimum viewing position as well as providing a positive seal between the gauge stem base and the gauge isolator.

Primarily designed for parallel stemmed gauges, by substituting the o-ring seal in the base of the gauge pod with a copper ring (Series FT1201) the gauge adaptor can be just as effectively used with taper stem gauges.

This range of Gauge Isolators are manufactured from a press forged steel with a hardened steel spindle and plastic 'easy grip' hand knob. Sealing above the adjusting screw thread ensures both smooth adjustment operation from the lubricated thread as well as eliminating the susceptibility to seizing due to corrosion.

**Working pressure to 400 BAR and temperature range from -20°C to +100°C.**

FT292



### Push Button Gauge Isolator Valves

FT292 Series push button gauge isolator valves are used to protect pressure gauges from the normal shocks associated with an operating hydraulic system. They provide a dampening of the shock to the gauge on opening and isolate the gauge from the hydraulic system when closed. At the same time the pressure gauge is drained to tank when the the gauge isolator is closed thus prolonging the life of the gauge by eliminating the trapped pressure that would normally maintain the gauge under stress with a normal shut-off valve type isolator.

A locking mechanism allows the gauge isolator to be 'locked' in the 'on' position by rotating the push button in the direction of the arrow on the knob (clockwise). This then gives a continual display of the circuit pressure.

**They may be used for working pressure up to 400 BAR.**

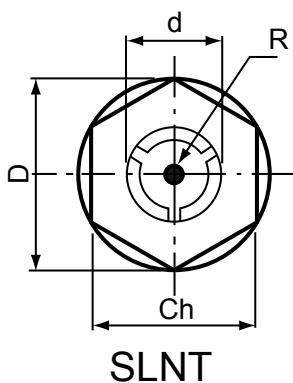


# Level Sight Glasses

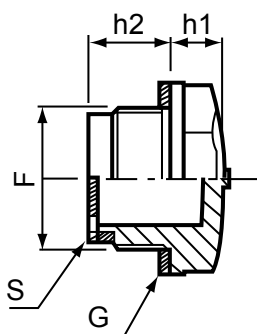
## SLNT - Level Sight Glasses with Contrast Screen

Threaded oil level indicators, hex head with shoulder, made from high density, transparent polyamide resin with a 'hot painted' red point in the centre and a contrast screen for clear indication of oil levels. Maximum pressure 3 bar (43 PSI).

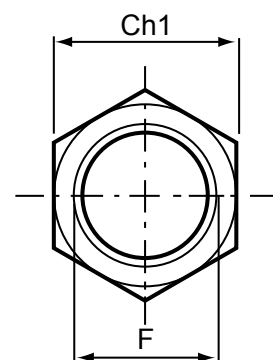
Stock No.	Dimensions								List Price
	Ch	F	D	d	h1	h2	Nm	Ch1	
SLNS14	17	G 1/4"	20	15	7	8	6		
SLNT38	18	G 3/8"	22	14	6.5	10.5	8	19	
SLNT12	24	G 1/2"	28	16	8	11	12	27	
SLNT34	30	G 3/4"	35	21	8	12	16	32	
SLNT1	35	G 1"	43	32	11	12	n.d.	36	
SLNT114	42	G 1-1/4"	51	33	10	16	n.d.	46	
SLNT112	50	G 1-1/2"	58	40	10	20	n.d.		
SLNT2	64	G 2"	74	48	12	20	n.d.		



SLNT



S = Contrast Screen



GF

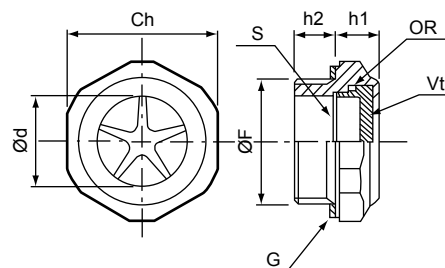
G = Fiber Gasket

R = Red Indicator Point

## SM - Aluminium Level Indicators

Threaded hex head level indicators manufactured from aluminium 11S with a transparent polyamide resin sight glass. Maximum pressure 10 bar (145 PSI).

Stock No.	Dimensions					List Price
	F	Ch	d	h1	h2	
SM14	G 1/4"	18	11	10	7	
SM38	G 3/8"	22	12	8	9	
SM12	G 1/2"	27	15	8	9	
SM34	G 3/4"	34	19	9	11	
SM1	G 1"	40	27	10.5	11	



S = Contrast screen  
Vt = Transparent disc  
G = Fiber gasket

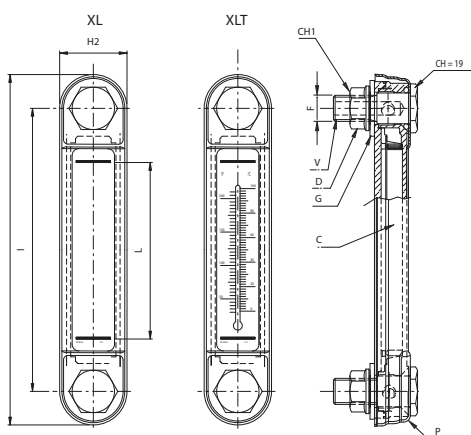


# XL Series Level Gauges



## Reservoir Level Gauges - Steel Body

Stock No.	Description	Dimensions (mm)								ØFI	List Price
		I	H1	H2	F	E	A	L	CH1		
XL03M10	Level Gauge - 76mm	76	107	31	M10	17	24.5	39	15	10.2	
XL03M12	Level Gauge - 76mm	76	107	31	M12	17	24.5	39	18	12.2	
XL03TM10	Level and Temperature Gauge - 76mm	76	107	31	M10	17	24.5	39	15	10.2	
XL05M12	Level Gauge - 127mm	127	156	31	M12	17	24.5	80	18	12.2	
XL05TM12	Level and Temperature Gauge - 127mm	127	156	31	M12	17	24.5	80	18	12.2	
XL10M12	Level Gauge - 254mm	254	286	34	M12	17	33	178	18	12.2	
XL10TM12	Level and Temperature Gauge - 254mm	254	286	34	M12	17	33	178	18	12.2	



XL series visual level gauges with or without thermometer are made in steel and supplied with a Buna-N oil seal. They are fitted to the exterior of oil and fuel tanks.

A bulb thermometer is incorporated in the level gauge and Version 'T' permits to check the temperature of the fluid in the oil tank.

### Materials

Steel body and 'trogamid' protection glass.

Galvanised steel fixing screw, Buna-N oil seal

### Temperature Range

-20°C to +80°C

### Maximum Working Range

2 bar

### Torque Bolt Tightening

20 Nm

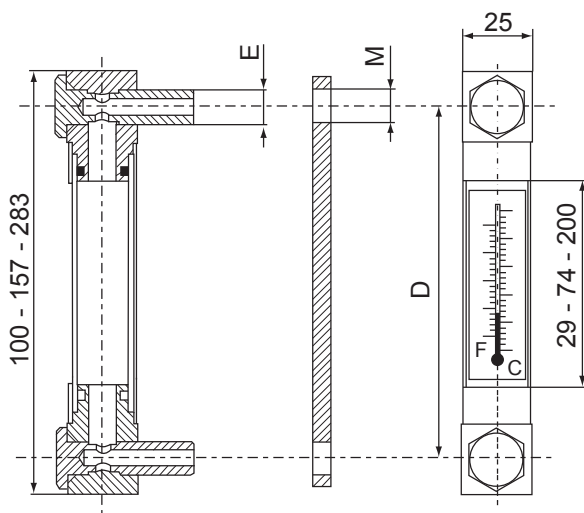
### Thermometer

Bulb incorporated in the level gauge



## Reservoir Level Gauges - Nylon Body

Stock No.	Description	Dimensions		M		List Price
		D	E	Ø min	Ø max	
LV3	Level Gauge - 254mm	254	M12	12.5	13	
LV3T	Level and Temperature Gauge - 254mm	254	M12	12.5	13	



LV series visual level gauges permit direct verification of the fluid level contained in the tank.

Distance 'D' stated in the above table, indicates the distance of the fixing holes whose diameter is 'M'.

The design allows for an error of up to 4mm, on the fixing hole centres during assembly; a new nylon black cover coating the level gauge entirely. These level gauges can be used with mineral oils and various fluids.

### Materials

Heads: glass reinforced nylon

Transparent: 'Perbex'

Bolts: Galvanised steel

Nuts: Galvanised steel

Outside Body: Glass reinforced nylon

### Temperature Range

From -20°C to +80°C

### Maximum Pressure

1 bar

### Torque Bolt Tightening

20 NM

### Thermometer

Bulb type with double calibrated scale °C and °F

### Thermometer Scale

0°C to +80°C (+32°F to +176°F)



# LT Series Level Gauge

## Reservoir Level Gauges - Polyamide

Stock No.	Description	List Price
LT2M12	Level Gauge - 127mm	
LT2PM12	Level Gauge complete with Cover - 127mm	
LT2TM12	Level and Temperature Gauge - 127mm	
LT2TPM12	Level and Temperature Gauge complete with Cover - 127mm	



LT series visual level gauges with or without thermometer are made in polyamide with or without nylon cover. They are supplied with a Buna-N oil seal.

### Materials

Nylon body and polyamide glass and plate. Protection glass.  
Plated steel fixing screw.

### Temperature Range

-20°C to +90°C

### Maximum Working Range

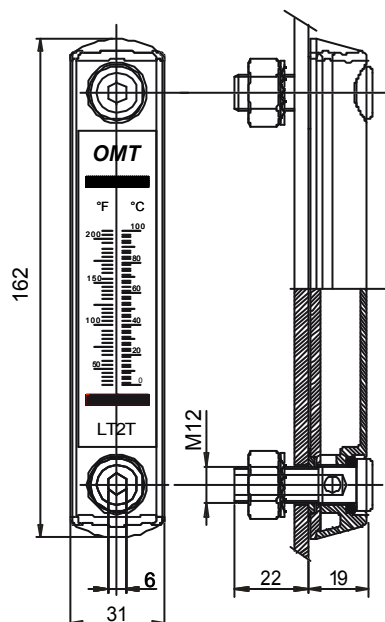
2 bar

### Torque Bolt Tightening

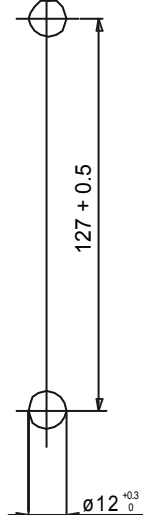
10 Nm



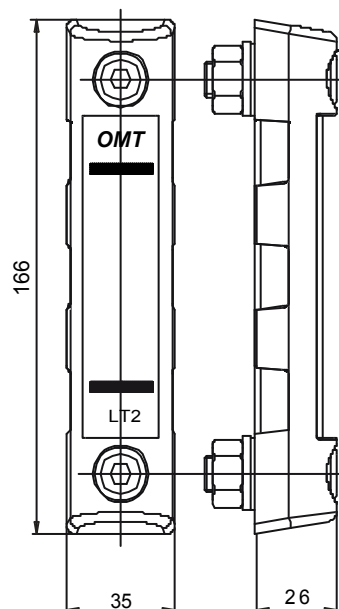
## LT2T



HOLES ON THE TANK



## LT2P

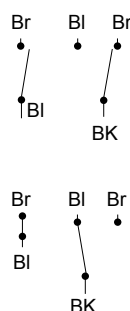
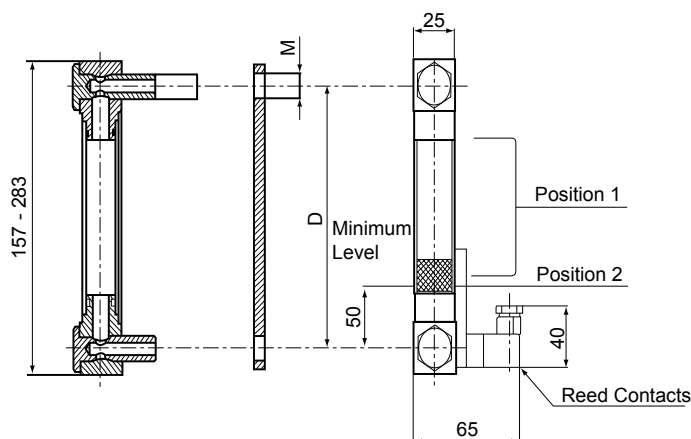




# L Series Electric Level Gauges

## Electric / Visual Reservoir Level Gauges

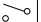


Stock No.	Description	Dimensions		M		List Price
		D	E	Ø min	Ø max	
LV2E	Visual / Electric Level Gauge - 127mm	127	M12	12.5	13	
LV3E	Visual / Electric Level Gauge - 254mm	254	M12	12.5	13	



LV\*E series level gauges allow the visual control of fluid in the oil tank. They also have a normally open double switch which activates reed contacts when the minimum oil level in the tank is reached.

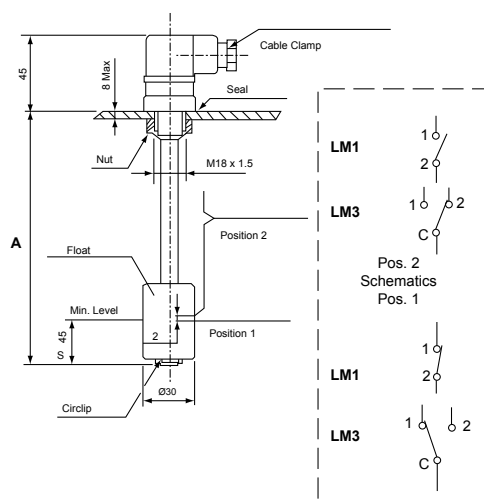
Technical characteristics are the same as LV series on previous page.

## Electric Reservoir Level Gauges

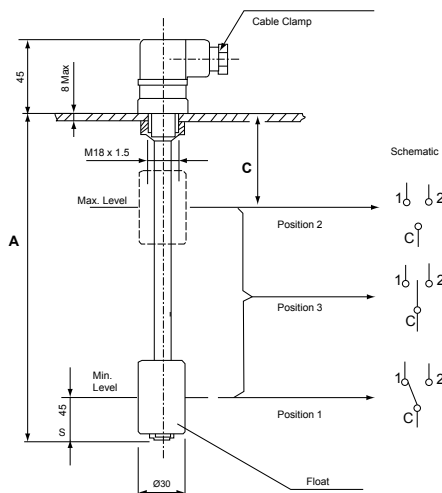
Stock No.	Description		Optional Dimensions (mm)						List Price
LM1F***	N.O. Level Gauge	 LM1	A	130	150	200	250	-	
LM1F***	N.O. Level Gauge		A	300	350	400	450	500	
LM2F***	2 Pole Level Gauge	 LM2	A	-	150	200	250	-	
LM2F***	2 Pole Level Gauge		A	300	350	400	450	500	
LM3F***	N.C. Level Gauge	 LM3	A	130	150	200	250	-	
LM3F***	N.C. Level Gauge		A	300	350	400	450	500	

\*\*\* Insert length required.

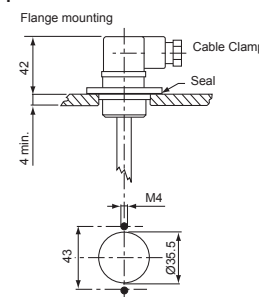
LM1\*\*\* - LM3\*\*\*



LM2\*\*\*



LM\*F\*\*\*



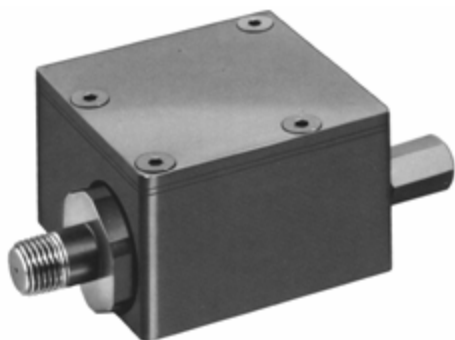
The LM\*F\*\*\* level gauges give an electric signal when minimum and/or maximum levels are reached in the oil tank. They must be mounted vertically, fixed on the tank cover and at least 50mm away from oil tank walls.



# PS Series Pressure Switches

## Pressure Switch

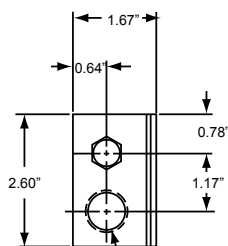
Stock No.	Description	Pressure Range	List Price
PS1500	Pressure Switch	150 - 1500 PSI Adjustable	
PS3000	Pressure Switch	500 - 3000 PSI Adjustable	



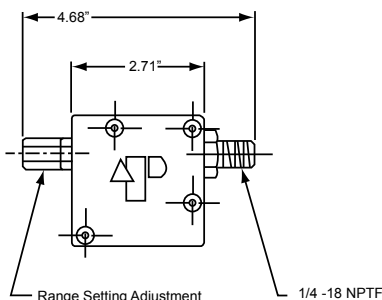
This compact, rugged pressure switch is designed to meet today's need for an inexpensive, yet dependable control. Although housed in an oil-tight, cast iron body, the assembly weighs only 1 kg (2lb 4oz) and can be easily included into new or existing circuitry.

### Features Include:

- A micro switch rated for 2 million cycles.
- A specially designed actuator consisting of a dampened piston and positive striker plate.
- Externally adjustable pressure range.
- 1/2 Conduit connector.
- 1/4 NPTF male pipe thread
- Common, normally open, and normally closed terminals.
- Gasketed, removable cover for ease of wire assembly.
- Pressure reset characteristics: 50-150 PSI differential.



1/2 Conduit Connection



Range Setting Adjustment

1/4 -18 NPTF

### Micro Switch Electrical Data UL and CSA Listed:

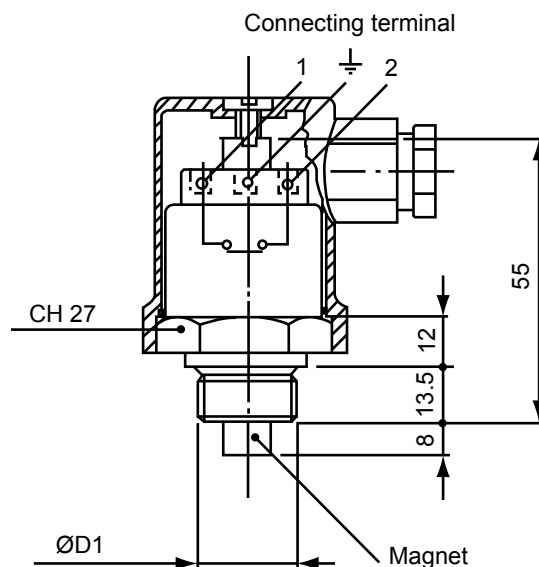
15 Amps and 1/2HP, 125 or 250 VAC  
1/2 Amp, 125 VDC  
1/4 Amp, 250 VDC  
5 Amp, 120 VAC "L"



## OMT - Bi-Metallic Thermostat Switch

Stock No.	Description	Thread	Working Temp.	Max. Temp	Rating	Electrical Resistance				List Price
						110VAC	24VAC	12VDC	24VDC	
TB60CM	Thermostat Switch	1/2" BSPP	60°C	100°C	IP65	1.5A	5A	5A	2A	

### TB60CM



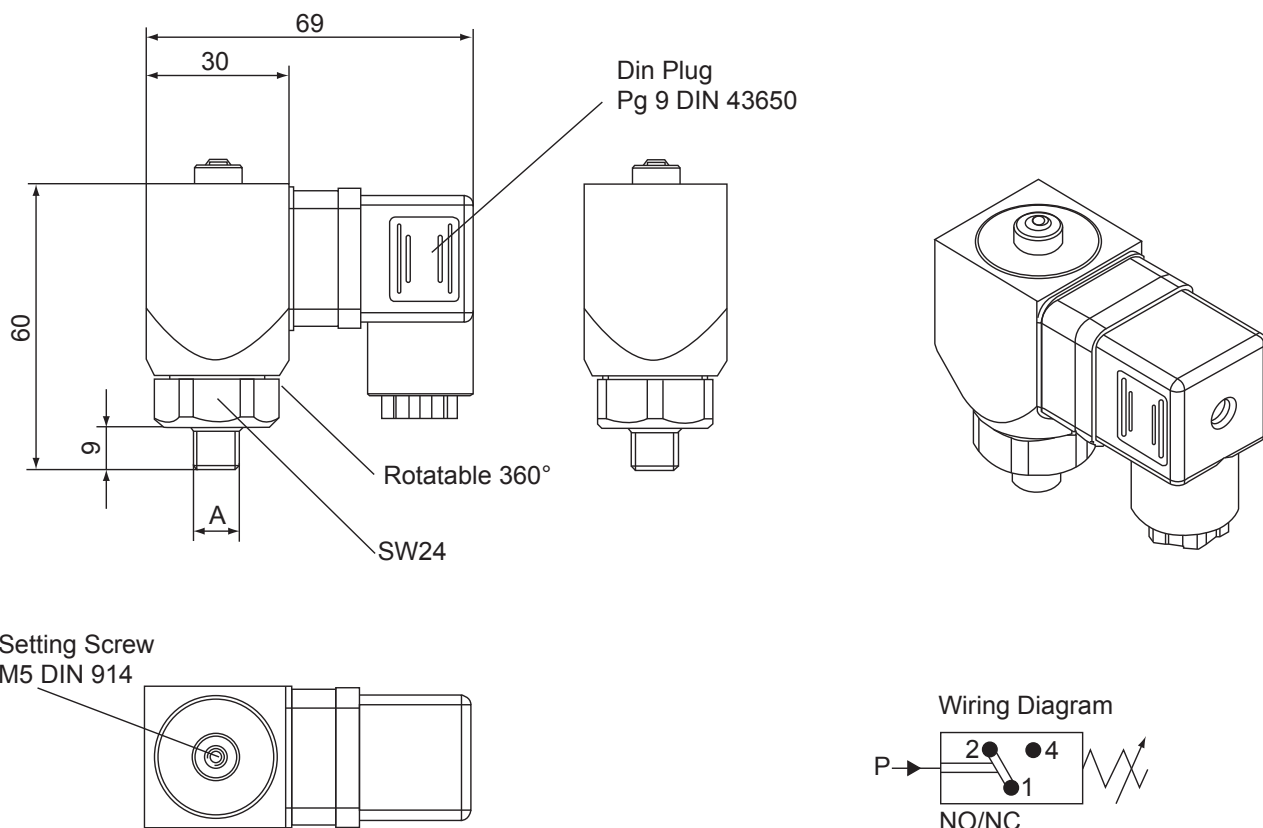


# 600 Series Pressure Switches

LAYHER

## Pressure Switch

Stock No.	Description	A	Pressure Range	List Price
600070	Pressure Switch	1/4" BSPP	10 - 70 Bar Adjustable	
600200	Pressure Switch	1/4" BSPP	50 - 200 Bar Adjustable	



## TECHNICAL DATA

### PART NO.

Pressure Setting Range  
Working Pressure Max.  
Bursting Pressure  
Fitting Thread  
Mounting Position  
Ambient Temperature  
Adjustability  
Differential  
Material  
Weight  
Switching Element  
Reference Voltage  
Reference Frequency  
Protective System

### 600070

10-70 bar  
70 bar  
120 bar  
1/4" BSPP male  
Any  
-25°C to +85°C  
Under pressure  
15-25%  
Galvanised Steel  
230 grams  
Micro switch - silver plated contacts/special gold plated contacts  
250 V  
Not over 100 Hz  
IP 65

### 600200

50-200 bar  
200 bar  
300 bar

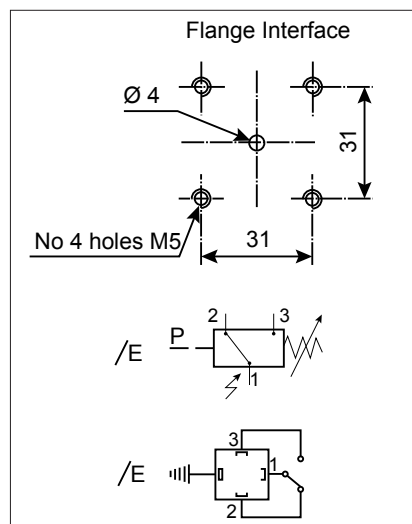
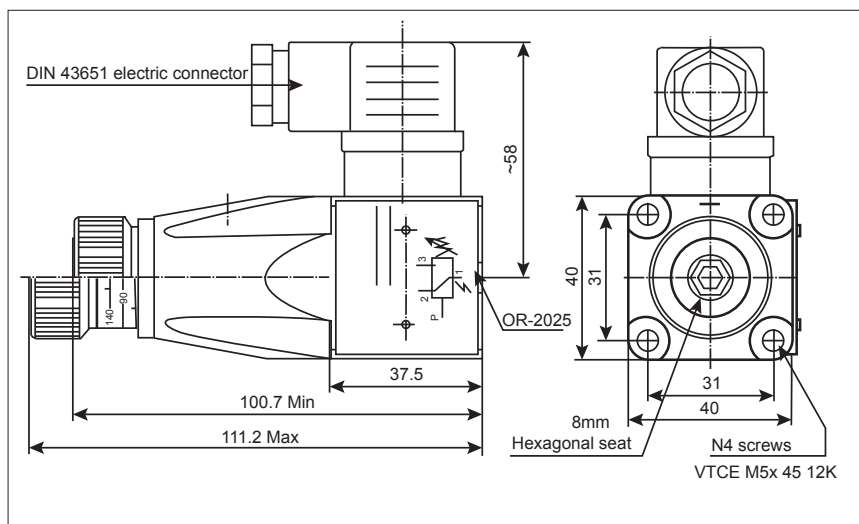


# FTIPN Series Pressure Switches



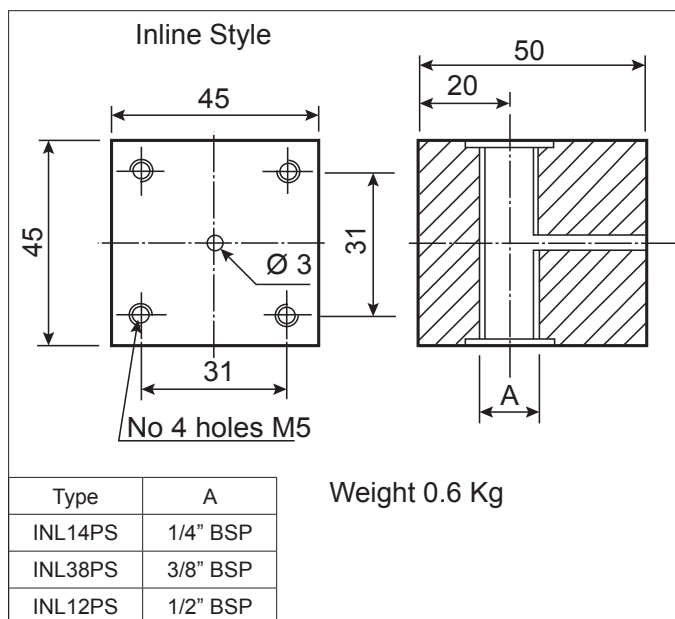
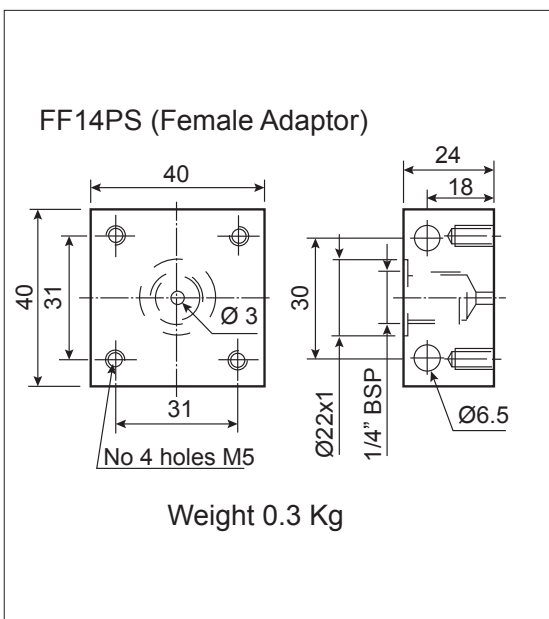
## Pressure Switch

Stock No.	Description	Interface	Pressure Range	List Price
FTIPN150	Pressure Switch	Flange 31 x 31	12 - 150 Bar Adjustable	
FTIPN350	Pressure Switch	Flange 31 x 31	30 - 350 Bar Adjustable	
FTIPN630	Pressure Switch	Flange 31 x 31	50 - 630 Bar Adjustable	



## Pressure Switch Adaptors

Stock No.	Description	A	Style	List Price
FF14PS	Pressure Switch Adaptor	1/4" BSPP F	End	
INL14PS	Pressure Switch Adaptor	1/4" BSPP F	Inline	

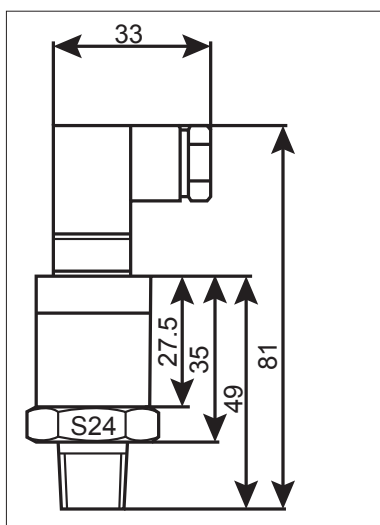




# SPT Series Pressure Transducers

## Pressure Transducers

Stock No.	Description	A	Pressure Range	List Price
SPT1200009	Pressure Transducer	1/4" BSPP	0 - 150 Bar Adjustable	
SPT1200010	Pressure Transducer	1/4" BSPP	0 - 200 Bar Adjustable	
SPT1200011	Pressure Transducer	1/4" BSPP	0 - 300 Bar Adjustable	



Parameter	Value	Note
Measure Range Bar	2 - 4 - 6 - 10 - 20 - 40 - 60 - 100 - 160 - 200 - 300 - 400 - 500 - 600	1 bar = 100kPa
Overload Pressure	1.5 x RP (rated pressure)	
Broken Pressure	3 x RP (rated pressure)	
Accuracy	± 0.5 FS	
Stability	Typical ± 0.5% FS Max 1% FS	
Operating Temperature	-40°C +125°C	
Compensating Temperature	-10°C +80°C	
Storage Temperature	-50°C +125°C	
Medium Compatibility	Corrosive medium compatible with Cr18Ni9Ti ceramic	
Wires	two-wire / three-wire	
Output Signal	4 - 20 mA 0.5 - 4.5 V 0/5 V 0/10Va	
Power Supply	12-30 Vdc 5 Vdc/10 - 30 Vdc/ac	dc/ac means dc and ac are both usable
Load Resistance	(U-10)/0.02 (Ω) > 100K Ω	
Insulation	>100M Ω @ 50V	
Elec. Connector	Packard, DIN 43650C, DIN 72585, M12Seal, Cable	
Shell Protection	IP67	
Wire Protection	IP67	
Connection	G1/4, NPT 1/4, 7/16-20UNF, G1/2	
Response Time	10 ms	
Pressure Form	Gauge G, Absolute A	
Certificate	CE, Intrinsically safe E, Explosion-proof D	
EMC	EMI: EN50081-1/-2 EMS: EN50082-2	