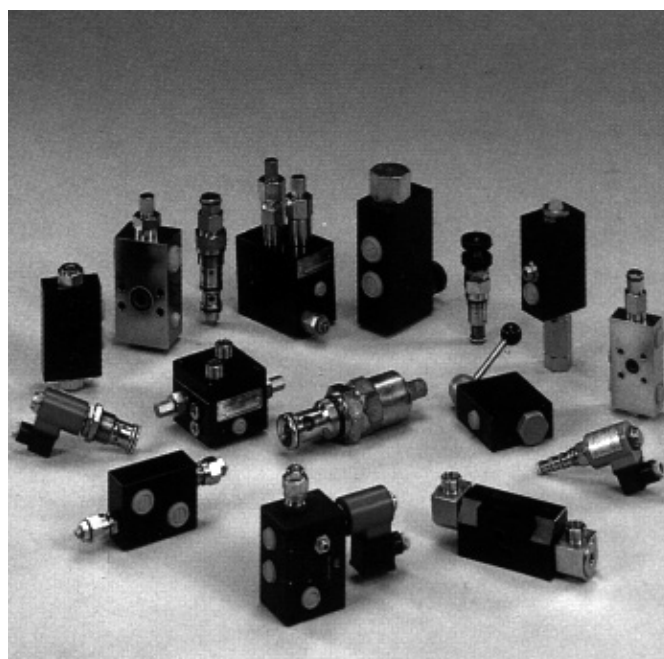


SECTION 4

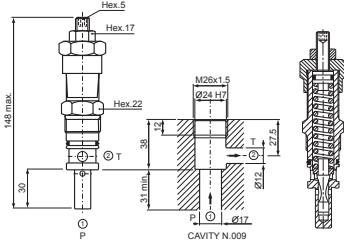
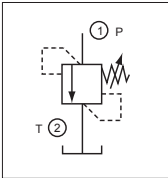
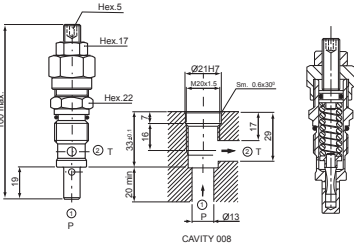
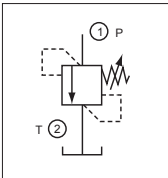
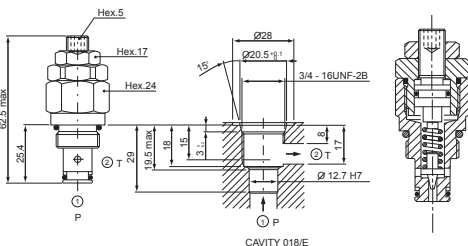
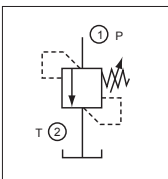
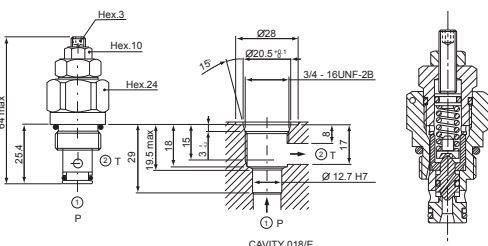
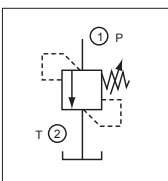
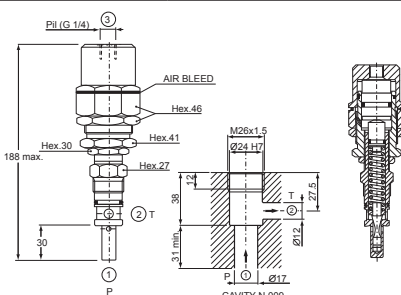
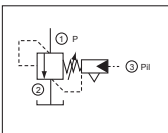
Oil Control Cartridge Valves

4

<u>Make</u>	<u>Model</u>	<u>Page</u>
Oil Control	Relief Valves	4.01~4.06
Oil Control	Sequence Valves	4.07~4.09
Oil Control	Check Valves	4.10~4.13
Oil Control	Overcentre & Motion Control Valves	4.14~4.23
Oil Control	Valves for Special Applications	4.24~4.25
Oil Control	Flow Control Valves	4.26~4.31



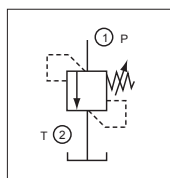
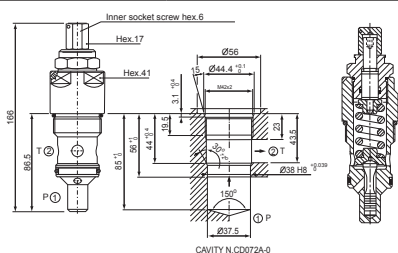
Direct Acting Poppet Type

Stock No.	Description	Max. Flow	Max. Pressure	Port Size	Page Ref. O.C. Cat.	List Price												
04.11.05.03.99.**	VS-80	80 LPM	250 BAR	Cartridge	1.12.05													
				<table><tr><th colspan="2">Technical Data</th></tr><tr><td>Installation torque</td><td>83-92 Nm</td></tr><tr><td>Max. working pressure</td><td>250 bar</td></tr><tr><td>Flow max.</td><td>80 l/min</td></tr><tr><td>Weight</td><td>0.35 kg</td></tr></table>			Technical Data		Installation torque	83-92 Nm	Max. working pressure	250 bar	Flow max.	80 l/min	Weight	0.35 kg		
Technical Data																		
Installation torque	83-92 Nm																	
Max. working pressure	250 bar																	
Flow max.	80 l/min																	
Weight	0.35 kg																	
04.11.18.03.99.**	VS-30	30 LPM	350 BAR	Cartridge	1.12.03													
				<table><tr><th colspan="2">Technical Data</th></tr><tr><td>Installation torque</td><td>46-51 Nm</td></tr><tr><td>Max. working pressure</td><td>350 bar</td></tr><tr><td>Flow max.</td><td>30 l/min</td></tr><tr><td>Weight</td><td>0.17 kg</td></tr></table>			Technical Data		Installation torque	46-51 Nm	Max. working pressure	350 bar	Flow max.	30 l/min	Weight	0.17 kg		
Technical Data																		
Installation torque	46-51 Nm																	
Max. working pressure	350 bar																	
Flow max.	30 l/min																	
Weight	0.17 kg																	
04.11.22.03.99.**	VS-10	3 LPM	350 BAR	Cartridge	1.11.01													
				<table><tr><th colspan="2">Technical Data</th></tr><tr><td>Installation torque</td><td>50-59 Nm</td></tr><tr><td>Max. working pressure</td><td>350 bar</td></tr><tr><td>Flow max.</td><td>3 l/min</td></tr><tr><td>Weight</td><td>0.14 kg</td></tr></table>			Technical Data		Installation torque	50-59 Nm	Max. working pressure	350 bar	Flow max.	3 l/min	Weight	0.14 kg		
Technical Data																		
Installation torque	50-59 Nm																	
Max. working pressure	350 bar																	
Flow max.	3 l/min																	
Weight	0.14 kg																	
04.11.23.03.99.**	VS-20	20 LPM	350 BAR	Cartridge	1.12.01													
				<table><tr><th colspan="2">Technical Data</th></tr><tr><td>Installation torque</td><td>50-59 Nm</td></tr><tr><td>Max. working pressure</td><td>350 bar</td></tr><tr><td>Flow max.</td><td>20 l/min</td></tr><tr><td>Weight</td><td>0.17 kg</td></tr></table>			Technical Data		Installation torque	50-59 Nm	Max. working pressure	350 bar	Flow max.	20 l/min	Weight	0.17 kg		
Technical Data																		
Installation torque	50-59 Nm																	
Max. working pressure	350 bar																	
Flow max.	20 l/min																	
Weight	0.17 kg																	
04.11.33.03.99.**	VS-80-2S	80 LPM	300 BAR	Cartridge	1.12.06A													
				<table><tr><th colspan="2">Technical Data</th></tr><tr><td>Installation torque</td><td>83-92 Nm</td></tr><tr><td>Max. working pressure</td><td>300 bar</td></tr><tr><td>Max. pressure in "Pi"</td><td>30 bar</td></tr><tr><td>Flow max.</td><td>80 l/min</td></tr><tr><td>Weight</td><td>1.16 kg</td></tr></table>			Technical Data		Installation torque	83-92 Nm	Max. working pressure	300 bar	Max. pressure in "Pi"	30 bar	Flow max.	80 l/min	Weight	1.16 kg
Technical Data																		
Installation torque	83-92 Nm																	
Max. working pressure	300 bar																	
Max. pressure in "Pi"	30 bar																	
Flow max.	80 l/min																	
Weight	1.16 kg																	

** Denotes pressure range.

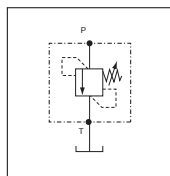
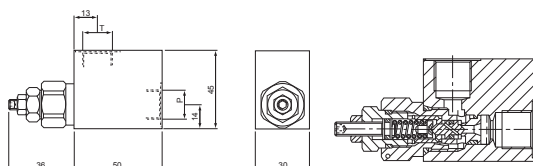


Stock No.	Description	Max. Flow	Max. Pressure	Port Size	Page Ref. O.C. Cat.	List Price
04.11.34.52.99.35	VS-42	200 LPM	350 BAR	Cartridge	1.12.07	



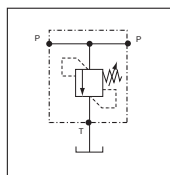
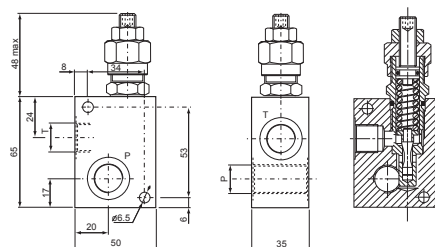
With holes for wire locking	
Installation torque	246-272 Nm
Max. working pressure	350 bar
Flow max.	200 l/min
Weight	1 kg

05.13.07.03.02.**	VSC-20	20 LPM	350 BAR	3/8"	1.12.02	
-------------------	--------	--------	---------	------	---------	--



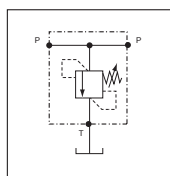
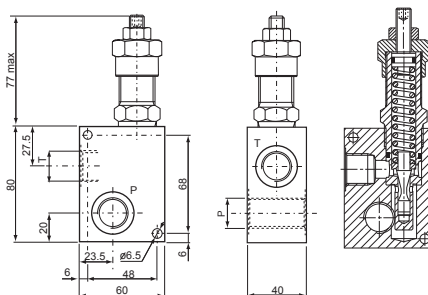
Max. working pressure	350 bar
Flow max.	20 l/min
Weight	0.425 kg

05.13.01.03.03.**	VSC-30	30 LPM	350 BAR	1/2"	1.12.04	
05.13.03.03.02.**				3/8"		
05.13.01.03.09.**				1/4"		



Max. working pressure	350 bar
Flow max.	30 l/min
Weight	0.47 kg

05.13.02.03.03.**	VSC-80	80 LPM	250 BAR	1/2"	1.12.06	
05.13.02.03.04.**				3/4"		



Max. working pressure	250 bar
Flow max.	80 l/min
Weight	0.75 kg

Relief Valves

Direct Acting, with Differential Piston Relief

Stock No.	Description	Max. Flow	Max. Pressure	Port Size	Page Ref. O.C. Cat.	List Price
04.15.01.03.99.**	VSD-50	40 LPM	350 BAR	Cartridge	1.13.01	
<div><div><p>Inner socket screw hex 6</p><p>Hex 27</p><p>Hex 27</p><p>102</p><p>35</p><p>1</p><p>P</p><p>T</p><p>27</p><p>27</p><p>27</p><p>27</p><p>27</p><p>27</p><p>27</p><p>27</p><p>27</p><p>27</p><p>27</p><p>27</p><p>27</p><p>27</p><p>27</p><p>27</p><p>27</p><p>27</p><p>27</p><p>27</p><p>27</p><p>27</p><p>27</p><p>27</p><p>27</p><p>27</p><p>27</p><p>27</p><p>27</p><p>27</p><p>27</p><p>27</p><p>27</p><p>27</p><p>27</p><p>27</p><p>27</p><p>27</p><p>27</p><p>27</p><p>27</p><p>27</p><p>27</p><p>27</p><p>27</p><p>27</p><p>27</p><p>27</p><p>27</p><p>27</p><p>27</p><p>27</p><p>27</p><p>27</p><p>27</p><p>27</p><p>27</p><p>27</p><p>27</p><p>27</p><p>27</p><p>27</p><p>27</p><p>27</p><p>27</p><p>27</p><p>27</p><p>27</p><p>27</p><p>27</p><p>27</p><p>27</p><p>27</p><p>27</p><p>27</p><p>27</p><p>27</p><p>27</p><p>27</p><p>27</p><p>27</p><p>27</p><p>27</p><p>27</p><p>27</p><p>27</p><p>27</p><p>27</p><p>27</p><p>27</p><p>27</p><p>27</p><p>27</p><p>27</p><p>27</p><p>27</p><p>27</p><p>27</p><p>27</p><p>27</p><p>27</p><p>27</p><p>27</p><p>27</p><p>27</p><p>27</p><p>27</p><p>27</p><p>27</p><p>27</p><p>27</p><p>27</p><p>27</p><p>27</p><p>27</p><p>27</p><p>27</p><p>27</p><p>27</p><p>27</p><p>27</p><p>27</p><p>27</p><p>27</p><p>27</p><p>27</p><p>27</p><p>27</p><p>27</p><p>27</p><p>27</p><p>27</p><p>27</p><p>27</p><p>27</p><p>27</p><p>27</p><p>27</p><p>27</p><p>27</p><p>27</p><p>27</p><p>27</p><p>27</p><p>27</p><p>27</p><p>27</p><p>27</p><p>27</p><p>27</p><p>27</p><p>27</p><p>27</p><p>27</p><p>27</p><p>27</p><p>27</p><p>27</p><p>27</p><p>27</p><p>27</p><p>27</p><p>27</p><p>27</p><p>27</p><p>27</p><p>27</p><p>27</p><p>27</p><p>27</p><p>27</p><p>27</p><p>27</p><p>27</p><p>27</p><p>27</p><p>27</p><p>27</p><p>27</p><p>27</p><p>27</p><p>27</p><p>27</p><p>27</p><p>27</p><p>27</p><p>27</p><p>27</p><p>27</p><p>27</p><p>27</p><p>27</p><p>27</p><p>27</p><p>27</p><p>27</p><p>27</p><p>27</p><p>27</p><p>27</p><p>27</p><p>27</p><p>27</p><p>27</p><p>27</p><p>27</p><p>27</p><p>27</p><p>27</p><p>27</p><p>27</p><p>27</p><p>27</p><p>27</p><p>27</p><p>27</p><p>27</p><p>27</p><p>27</p><p>27</p><p>27</p><p>27</p><p>27</p><p>27</p><p>27</p><p>27</p><p>27</p><p>27</p><p>27</p><p>27</p><p>27</p><p>27</p><p>27</p><p>27</p><p>27</p><p>27</p><p>27</p><p>27</p><p>27</p><p>27</p><p>27</p><p>27</p><p>27</p><p>27</p><p>27</p><p>27</p><p>27</p><p>27</p><p>27</p><p>27</p><p>27</p><p>27</p><p>27</p><p>27</p><p>27</p><p>27</p><p>27</p><p>27</p><p>27</p><p>27</p><p>27</p><p>27</p><p>27</p><p>27</p><p>27</p><p>27</p><p>27</p><p>27</p><p>27</p><p>27</p><p>27</p><p>27</p><p>27</p><p>27</p><p>27</p><p>27</p><p>27</p><p>27</p><p>27</p><p>27</p><p>27</p><p>27</p><p>27</p><p>27</p><p>27</p><p>27</p><p>27</p><p>27</p><p>27</p><p>27</p><p>27</p><p>27</p><p>27</p><p>27</p><p>27</p><p>27</p><p>27</p><p>27</p><p>27</p><p>27</p><p>27</p><p>27</p><p>27</p><p>27</p><p>27</p><p>27</p><p>27</p><p>27</p><p>27</p><p>27</p><p>27</p><p>27</p><p>27</p><p>27</p><p>27</p><p>27</p><p>27</p><p>27</p><p>27</p><p>27</p><p>27</p><p>27</p><p>27</p><p>27</p><p>27</p><p>27</p><p>27</p><p>27</p><p>27</p><p>27</p><p>27</p><p>27</p><p>27</p><p>27</p><p>27</p><p>27</p><p>27</p><p>27</p><p>27</p><p>27</p><p>27</p><p>27</p><p>27</p><p>27</p><p>27</p><p>27</p><p>27</p><p>27</p><p>27</p><p>27</p><p>27</p><p>27</p><p>27</p><p>27</p><p>27</p><p>27</p><p>27</p><p>27</p><p>27</p><p>27</p><p>27</p><p>27</p><p>27</p><p>27</p><p>27</p><p>27</p><p>27</p><p>27</p><p>27</p><p>27</p><p>27</p><p>27</p><p>27</p><p>27</p><p>27</p><p>27</p><p>27</p><p>27</p><p>27</p><p>27</p><p>27</p><p>27</p><p>27</p><p>27</p><p>27</p><p>27</p><p>27</p><p>27</p><p>27</p><p>27</p><p>27</p><p>27</p><p>27</p><p>27</p><p>27</p><p>27</p><p>27</p><p>27</p><p>27</p><p>27</p><p>27</p><p>27</p><p>27</p><p>27</p><p>27</p><p>27</p><p>27</p><p>27</p><p>27</p><p>27</p><p>27</p><p>27</p><p>27</p><p>27</p><p>27</p><p>27</p><p>27</p><p>27</p><p>27</p><p>27</p><p>27</p><p>27</p><p>27</p><p>27</p><p>27</p><p>27</p><p>27</p><p>27</p><p>27</p><p>27</p><p>27</p><p>27</p><p>27</p><p>27</p><p>27</p><p>27</p><p>27</p><p>27</p><p>27</p><p>27</p><p>27</p><p>27</p><p>27</p><p>27</p><p>27</p><p>27</p><p>27</p><p>27</p><p>27</p><p>27</p><p>27</p><p>27</p><p>27</p><p>27</p><p>27</p><p>27</p><p>27</p><p>27</p><p>27</p><p>27</p><p>27</p><p>27</p><p>27</p><p>27</p><p>27</p><p>27</p><p>27</p><p>27</p><p>27</p><p>27</p><p>27</p><p>27</p><p>27</p><p>27</p><p>27</p><p>27</p><p>27</p><p>27</p><p>27</p><p>27</p><p>27</p><p>27</p><p>27</p><p>27</p><p>27</p><p>27</p><p>27</p><p>27</p><p>27</p><p>27</p><p>27</p><p>27</p><p>27</p><p>27</p><p>27</p><p>27</p><p>27</p><p>27</p><p>27</p><p>27</p><p>27</p><p>27</p><p>27</p><p>27</p><p>27</p><p>27</p><p>27</p><p>27</p><p>27</p><p>27</p><p>27</p><p>27</p><p>27</p><p>27</p><p>27</p><p>27</p><p>27</p><p>27</p><p>27</p><p>27</p><p>27</p><p>27</p><p>27</p><p>27</p><p>27</p><p>27</p><p>27</p><p>27</p><p>27</p><p>27</p><p>27</p><p>27</p><p>27</p><p>27</p><p>27</p><p>27</p><p>27</p><p>27</p><p>27</p><p>27</p><p>27</p><p>27</p><p>27</p><p>27</p><p>27</p><p>27</p><p>27</p><p>27</p><p>27</p><p>27</p><p>27</p><p>27</p><p>27</p><p>27</p><p>27</p><p>27</p><p>27</p><p>27</p><p>27</p><p>27</p><p>27</p><p>27</p><p>27</p><p>27</p><p>27</p><p>27</p><p>27</p><p>27</p><p>27</p><p>27</p><p>27</p><p>27</p><p>27</p><p>27</p><p>27</p><p>27</p><p>27</p><p>27</p><p>27</p><p>27</p><p>27</p><p>27</p><p>27</p><p>27</p><p>27</p><p>27</p><p>27</p><p>27</p><p>27</p><p>27</p><p>27</p><p>27</p><p>27</p><p>27</p><p>27</p><p>27</p><p>27</p><p>27</p><p>27</p><p>27</p><p>27</p><p>27</p><p>27</p><p>27</p><p>27</p><p>27</p><p>27</p><p>27</p><p>27</p><p>27</p><p>27</p><p>27</p><p>27</p><p>27</p><p>27</p><p>27</p><p>27</p><p>27</p><p>27</p><p>27</p><p>27</p><p>27</p><p>27</p><p>27</p><p>27</p><p>27</p><p>27</p><p>27</p><p>27</p><p>27</p><p>27</p><p>27</p><p>27</p><p>27</p><p>27</p><p>27</p><p>27</p><p>27</p><p>27</p><p>27</p><p>27</p><p>27</p><p>27</p><p>27</p><p>27</p><p>27</p><p>27</p><p>27</p><p>27</p><p>27</p><p>27</p><p>27</p><p>27</p><p>27</p><p>27</p><p>27</p><p>27</p><p>27</p><p>27</p><p>27</p><p>27</p><p>27</p><p>27</p><p>27</p><p>27</p><p>27</p><p>27</p><p>27</p><p>27</p><p>27</p><p>27</p><p>27</p><p>27</p><p>27</p><p>27</p><p>27</p><p>27</p><p>27</p><p>27</p><p>27</p><p>27</p><p>27</p><p>27</p><p>27</p><p>27</p><p>27</p><p>27</p><p>27</p><p>27</p><p>27</p><p>27</p><p>27</p><p>27</p><p>27</p><p>27</p><p>27</p><p>27</p><p>27</p><p>27</p><p>27</p><p>27</p><p>27</p><p>27</p><p>27</p><p>27</p><p>27</p><p>27</p><p>27</p><p>27</p><p>27</p><p>27</p><p>27</p><p>27</p><p>27</p><p>27</p><p>27</p><p>27</p><p>27</p><p>27</p><p>27</p><p>27</p><p>27</p><p>27</p><p>27</p><p>27</p><p>27</p><p>27</p><p>27</p><p>27</p><p>27</p><p>27</p><p>27</p><p>27</p><p>27</p><p>27</p><p>27</p><p>27</p><p>27</p><p>27</p><p>27</p><p>27</p><p>27</p><p>27</p><p>27</p><p>27</p><p>27</p><p>27</p><p>27</p><p>27</p><p>27</p><p>27</p><p>27</p><p>27</p><p>27</p><p>27</p><p>27</p><p>27</p><p>27</p><p>27</p><p>27</p><p>27</p><p>27</p><p>27</p><p>27</p><p>27</p><p>27</p><p>27</p><p>27</p><p>27</p><p>27</p><p>27</p><p>27</p><p>27</p><p>27</p><p>27</p><p>27</p><p>27</p><p>27</p><p>27</p><p>27</p><p>27</p><p>27</p><p>27</p><p>27</p><p>27</p><p>27</p><p>27</p><p>27</p><p>27</p><p>27</p><p>27</p><p>27</p><p>27</p><p>27</p><p>27</p><p>27</p><p>27</p><p>27</p><p>27</p><p>27</p><p>27</p><p>27</p><p>27</p><p>27</p><p>27</p><p>27</p><p>27</p><p>27</p><p>27</p><p>27</p><p>27</p><p>27</p><p>27</p><p>27</p><p>27</p><p>27</p><p>27</p><p>27</p><p>27</p><p>27</p><p>27</p><p>27</p><p>27</p><p>27</p><p>27</p><p>27</p><p>27</p><p>27</p><p>27</p><p>27</p><p>27</p><p>27</p><p>27</p><p>27</p><p>27</p><p>27</p><p>27</p><p>27</p><p>27</p><p>27</p><p>27</p><p>27</p><p>27</p><p>27</p><p>27</p><p>27</p><p>27</p><p>27</p><p>27</p><p>27</p><p>27</p><p>27</p><p>27</p><p>27</p><p>27</p><p>27</p><p>27</p><p>27</p><p>27</p><p>27</p><p>27</p><p>27</p><p>27</p><p>27</p><p>27</p><p>27</p><p>27</p><p>27</p><p>27</p><p>27</p><p>27</p><p>27</p><p>27</p><p>27</p><p>27</p><p>27</p><p>27</p><p>27</p><p>27</p><p>27</p><p>27</p><p>27</p><p>27</p><p>27</p><p>27</p><p>27</p><p>27</p><p>27</p><p>27</p><p>27</p><p>27</p><p>27</p><p>27</p><p>27</p><p>27</p><p>27</p><p>27</p><p>27</p><p>27</p><p>27</p><p>27</p><p>27</p><p>27</p><p>27</p><p>27</p><p>27</p><p>27</p><p>27</p><p>27</p><p>27</p><p>27</p><p>27</p><p>27</p><p>27</p><p>27</p><p>27</p><p>27</p><p>27</p><p>27</p><p>27</p><p>27</p><p>27</p><p>27</p><p>27</p><p>27</p><p>27</p><p>27</p><p>27</p><p>27</p><p>27</p><p>27</p><p>27</p><p>27</p><p>27</p><p>27</p><p>27</p><p>27</p><p>27</p><p>27</p><p>27</p><p>27</p><p>27</p><p>27</p><p>27</p><p>27</p><p>27</p><p>27</p><p>27</p><p>27</p><p>27</p><p>27</p><p>27</p><p>27</p><p>27</p><p>27</p><p>27</p><p>27</p><p>27</p><p>27</p><p>27</p><p>27</p><p>27</p><p>27</p><p>27</p><p>27</p><p>27</p><p>27</p><p>27</p><p>27</p><p>27</p><p>27</p><p>27</p><p>27</p><p>27</p><p>27</p><p>27</p><p>27</p><p>27</p><p>27</p><p>27</p><p>27</p><p>27</p><p>27</p><p>27</p><p>27</p><p>27</p><p>27</p><p>27</p><p>27</p><p>27</p><p>27</p><p>27</p><p>27</p><p>27</p><p>27</p><p>27</p><p>27</p><p>27</p><p>27</p><p>27</p><p>27</p><p>27</p><p>27</p><p>27</p><p>27</p><p>27</p><p>27</p><p>27</p><p>27</p><p>27</p><p>27</p><p>27</p><p>27</p><p>27</p><p>27</p><p>27</p><p>27</p><p>27</p><p>27</p><p>27</p><p>27</p><p>27</p><p>27</p><p>27</p><p>27</p><p>27</p><p>27</p><p>27</p><p>27</p><p>27</p><p>27</p><p>27</p><p>27</p><p>27</p><p>27</p><p>27</p><p>27</p><p>27</p><p>27</p><p>27</p><p>27</p><p>27</p><p>27</p><p>27</p><p>27</p><p>27</p><p>27</p><p>27</p><p>27</p><p>27</p><p>27</p><p>27</p><p>27</p><p>27</p><p>27</p><p>27</p><p>27</p><p>27</p><p>27</p><p>27</p><p>27</p><p>27</p><p>27</p><p>27</p><p>27</p><p>27</p><p>27</p><p>27</p><p>27</p><p>27</p><p>27</p><p>27</p><p>27</p><p>27</p><p>27</p><p>27</p><p>27</p><p>27</p><p>27</p><p>27</p><p>27</p><p>27</p><p>27</p><p>27</p><p>27</p><p>27</p><p>27</p><p>27</p><p>27</p><p>27</p><p>27</p><p>27</p><p>27</p><p>27</p><p>27</p><p>27</p><p>27</p><p>27</p><p>27</p><p>27</p><p>27</p><p>27</p><p>27</p><p>27</p><p>27</p><p>27</p><p>27</p><p>27</p><p>27</p><p>27</p><p>27</p><p>27</p><p>27</p><p>27</p><p>27</p><p>27</p><p>27</p><p>27</p><p>27</p><p>27</p><p>27</p><p>27</p><p>27</p><p>27</p><p>27</p><p>27</p><p>27</p><p>27</p><p>27</p><p>27</p><p>27</p><p>27</p><p>27</p><p>27</p><p>27</p><p>27</p><p>27</p><p>27</p><p>27</p><p>27</p><p>27</p><p>27</p><p>27</p><p>27</p><p>27</p><p>27</p><p>27</p><p>27</p><p>27</p><p>27</p><p>27</p><p>27</p><p>27</p><p>27</p><p>27</p><p>27</p><p>27</p><p>27</p><p>27</p><p>27</p><p>27</p><p>27</p><p>27</p><p>27</p><p>27</p><p>27</p><p>27</p><p>27</p><p>27</p><p>27</p><p>27</p><p>27</p><p>27</p><p>27</p><p>27</p><p>27</p><p>27</p><p>27</p><p>27</p><p>27</p><p>27</p><p>27</p><p>27</p><p>27</p><p>27</p><p>27</p><p>27</p><p>27</p><p>27</p><p>27</p><p>27</p><p>27</p><p>27</p><p>27</p><p>27</p><p>27</p><p>27</p><p>27</p><p>27</p><p>27</p><p>27</p><p>27</p><p>27</p><p>27</p><p>27</p><p>27</p><p>27</p><p>27</p><p>27</p><p>27</p><p>27</p><p>27</p><p>27</p><p>27</p><p>27</p><p>27</p><p>27</p><p>27</p><p>27</p><p>27</p><p>27</p><p>27</p><p>27</p><p>27</p><p>27</p><p>27</p><p>27</p><p>27</p><p>27</p><p>27</p><p>27</p><p>27</p><p>27</p><p>27</p><p>27</p><p>27</p><p>27</p><p>27</p><p>27</p><p>27</p><p>27</p><p>27</p><p>27</p><p>27</p><p>27</p><p>27</p><p>27</p><p>27</p><p>27</p><p>27</p><p>27</p><p>27</p><p>27</p><p>27</p><p>27</p><p>27</p><p>27</p><p>27</p><p>27</p><p>27</p><p>27</p><p>27</p><p>27</p><p>27</p><p>27</p><p>27</p><p>27</p><p>27</p><p>27</p><p>27</p><p>27</p><p>27</p><p>27</p><p>27</p><p>27</p><p>27</p><p>27</p><p>27</p><p>27</p><p>27</p><p>27</p><p>27</p><p>27</p><p>27</p><p>27</p><p>27</p><p>27</p><p>27</p><p>27</p><p>27</p><p>27</p><p>27</p><p>27</p><p>27</p><p>27</p><p>27</p><p>27</p><p>27</p><p>27</p><p>27</p><p>27</p><p>27</p><p>27</p><p>27</p><p>27</p><p>27</p><p>27</p><p>27</p><p>27</p><p>27</p><p>27</p><p>27</p><p>27</p><p>27</p><p>27</p><p>27</p><p>27</p><p>27</p><p>27</p><p>27</p><p>27</p><p>27</p><p>27</p><p>27</p><p>27</p><p>27</p><p>27</p><p>27</p><p>27</p><p>27</p><p>27</p><p>27</p><p>27</p><p>27</p><p>27</p><p>27</p><p>27</p><p>27</p><p>27</p><p>27</p><p>27</p><p>27</p><p>27</p><p>27</p><p>27</p><p>27</p><p>27</p><p>27</p><p>27</p><p>27</p><p>27</p><p>27</p><p>27</p><p>27</p><p>27</p><p>27</p><p>27</p><p>27</p><p>27</p><p>27</p><p>27</p><p>27</p><p>27</p><p>27</p><p>27</p><p>27</p><p>27</p><p>27</p><p>27</p><p>27</p><p>27</p><p>27</p><p>27</p><p>27</p><p>27</p><p>27</p><p>27</p><p>27</p><p>27</p><p>27</p><p>27</p><p>27</p><p>27</p><p>27</p><p>27</p><p>27</p><p>27</p><p>27</p><p>27</p><p>27</p><p>27</p><p>27</p><p>27</p><p>27</p><p>27</p><p>27</p><p>27</p><p>27</p><p>27</p><p>27</p><p>27</p><p>27</p><p>27</p><p>27</p><p>27</p><p>27</p><p>27</p><p>27</p><p>27</p><p>27</p><p>27</p><p>27</p><p>27</p><p>27</p><p>27</p><p>27</p><p>27</p><p>27</p><p>27</p><p>27</p><p>27</p><p>27</p><p>27</p><p>27</p><p>27</p><p>27</p><p>27</p><p>27</p><p>27</p><p>27</p><p>27</p><p>27</p><p>27</p><p>27</p><p>27</p><p>27</p><p>27</p><p>27</p><p>27</p><p>27</p><p>27</p><p>27</p><p>27</p><p>27</p><p>27</p><p>27</p><p>27</p><p>27</p><p>27</p><p>27</p><p>27</p><p>27</p><p>27</p><p>27</p><p>27</p><p>27</p><p>27</p><p>27</p><p>27</p></div></div>						



4

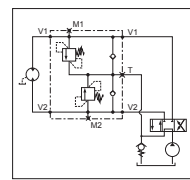
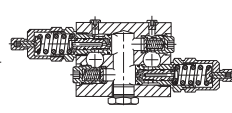
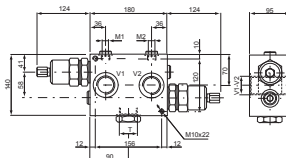


Relief Valves

4

Dual Cross Over, Anti-Cavitation Relief

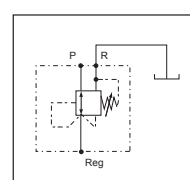
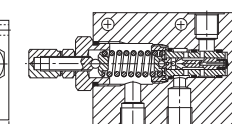
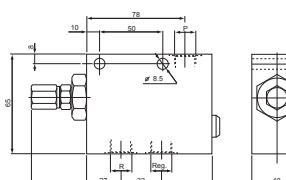
Stock No.	Description	Max. Flow	Max. Pressure	Port Size	Page Ref. O.C. Cat.	List Price
05.15.03.03.06.**	VSD-DI-VA-350	350 LPM	210 BAR	1-1/4"	1.22.12	



Technical Data	
Max. working pressure	210 bar
Flow max.	350 l/min
Weight	9.1 kg

Pressure Reducing with Relief Feature

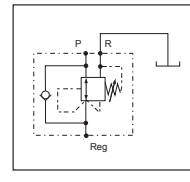
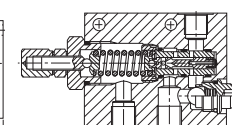
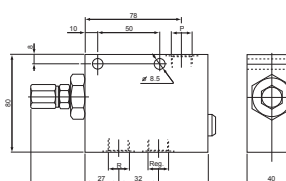
Stock No.	Description	Max. Flow	Max. Pressure	Port Size	Page Ref. O.C. Cat.	List Price
05.90.27.03.02.**	VRP-R	20 LPM	210 BAR	3/8"	1.61.01	



Technical Data	
Max. inlet pressure	210 bar
Max. regulated pressure	105 bar
Flow max.	20 l/min
Weight	1.00 kg

Pressure Reducing with Relief Feature and Free Flow Check

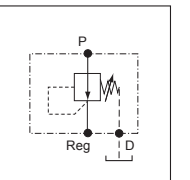
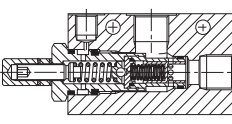
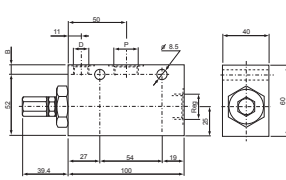
Stock No.	Description	Max. Flow	Max. Pressure	Port Size	Page Ref. O.C. Cat.	List Price
05.90.19.03.02.**	VRP-R-VU	20 LPM	210 BAR	3/8"	1.61.02	



Technical Data	
Max. inlet pressure	210 bar
Max. regulated pressure	105 bar
Flow max.	20 l/min
Weight	1.00 kg

Pilot Operated Pressure Reducing

Stock No.	Description	Max. Flow	Max. Pressure	Port Size	Page Ref. O.C. Cat.	List Price
05.90.33.03.03.**	VRPC-150	120 LPM	250 BAR	1/2"	1.62.02	
05.90.33.03.04.**				3/4"		



Technical Data	
Max. inlet pressure	250 bar
Max. regulated pressure	210 bar
Flow max.	120 l/min
Weight	0.95 kg

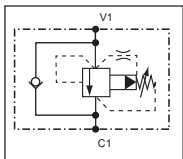
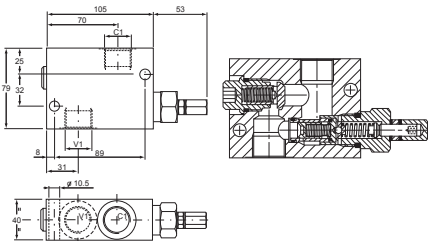
** Denotes pressure range.



Sequence Valves

Pilot Operated Spool Type Sequence

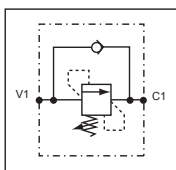
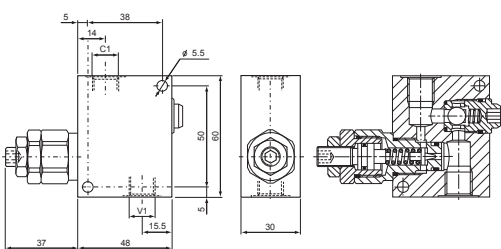
Stock No.	Description	Max. Flow	Max. Pressure	Port Size	Page Ref. O.C. Cat.	List Price
05.21.15.03.03.**	VSQP-150	150 LPM	350 BAR	1/2"	2.10.00	
05.21.15.03.04.**				3/4"		



Technical Data	
Max. working pressure	350 bar
Flow max.	150 l/min
Weight	1.07 kg

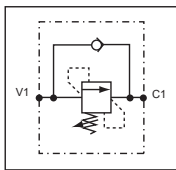
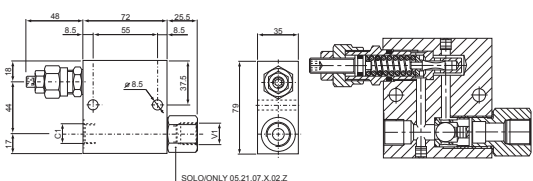
Direct Sequence

Stock No.	Description	Max. Flow	Max. Pressure	Port Size	Page Ref. O.C. Cat.	List Price
05.21.06.03.09.**	VSQ-10	10 LPM	350 BAR	1/4"	2.11.00	



Technical Data	
Max. working pressure	350 bar
Flow max.	10 l/min
Weight	0.30 kg

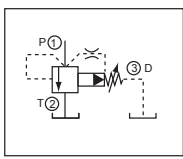
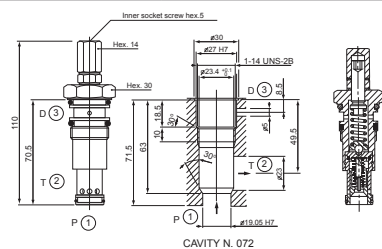
05.21.07.03.02.**	VSQ-30	30 LPM	350 BAR	3/8"	2.11.01	
05.21.07.03.03.**				1/2"		



Technical Data	
Max. working pressure	350 bar
Flow max.	30 l/min
Weight	0.81 kg

Pilot Operated, Vented, Spool and Cartridge Type Relief

Stock No.	Description	Max. Flow	Max. Pressure	Port Size	Page Ref. O.C. Cat.	List Price
04.13.03.03.99.**	VSP-SD-150	150 LPM	210 BAR	Cartridge	2.13.01	



Technical Data	
Installation torque	121-133 Nm
Max. working pressure	210 bar
Flow max.	150 l/min
Weight	0.28 kg

** Denotes pressure range.

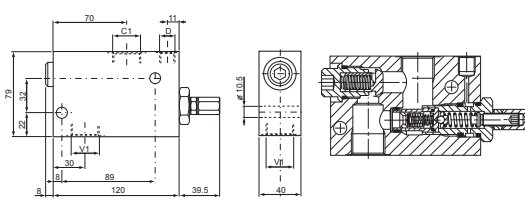


Sequence Valves

4

Pilot Operated Spool Type Sequence

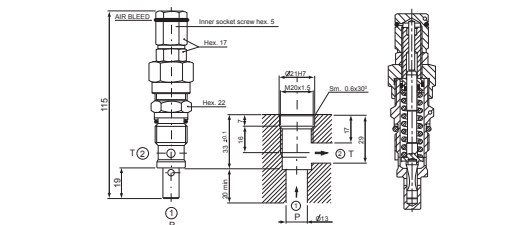
Stock No.	Description	Max. Flow	Max. Pressure	Port Size	Page Ref. O.C. Cat.	List Price
05.24.02.03.04.**	VSQP-SD-150	150 LPM	210 BAR	3/4"	2.13.02	



Technical Data	
Max. working pressure	210 bar
Flow max.	150 l/min
Weight	1.15 kg

Direct, Poppet Type, Self Compensated Relief

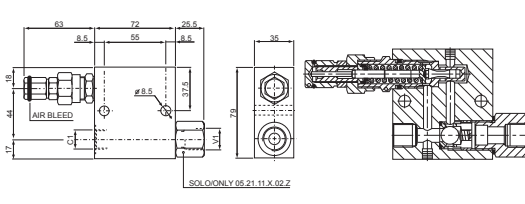
Stock No.	Description	Max. Flow	Max. Pressure	Port Size	Page Ref. O.C. Cat.	List Price
04.11.27.03.99.**	VS-30-CC	30 LPM	350 BAR	Cartridge	2.14.01	



Technical Data	
Installation torque	46-51 Nm
Max. working pressure	350 bar
Flow max.	30 l/min
Weight	0.17 kg

Direct, Poppet Type, Self Compensated Sequence

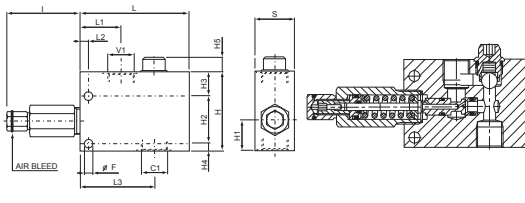
Stock No.	Description	Max. Flow	Max. Pressure	Port Size	Page Ref. O.C. Cat.	List Price
05.21.11.03.03.**	CSQ-CC-30	30 LPM	350 BAR	1/2"	2.14.50	



Technical Data	
Max. working pressure	350 bar
Flow max.	30 l/min
Weight	0.81 kg

Differential Piston Sequence

Stock No.	Description	Max. Flow	Max. Pressure	Port Size	Page Ref. O.C. Cat.	List Price
05.22.03.03.03.**	VSQD-CC	80 LPM	350 BAR	1/2"	2.14.61	
05.22.03.03.04.**				3/4"		



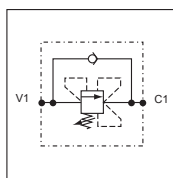
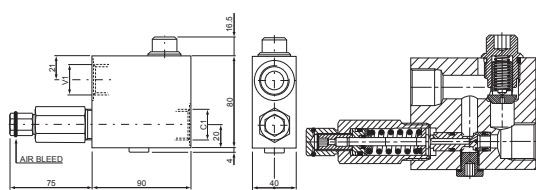
Technical Data	
Max. working pressure	350 bar
Flow max.	80 l/min

** Denotes pressure range.

Sequence Valves

Differential Piston Sequence

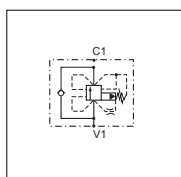
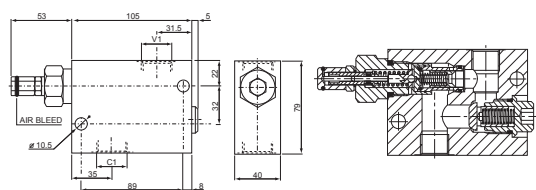
Stock No.	Description	Max. Flow	Max. Pressure	Port Size	Page Ref. O.C. Cat.	List Price
05.22.05.03.04.**	VSQD-CC-P	80 LPM	350 BAR	3/4"	2.41.62	



Technical Data	
Max. working pressure	350 bar
Flow max.	80 l/min
Weight	1.150 kg

Pilot Operated Spool Type, Self Compensated Sequence

Stock No.	Description	Max. Flow	Max. Pressure	Port Size	Page Ref. O.C. Cat.	List Price
05.24.06.03.03.**	VSQP-CC-150	150 LPM	210 BAR	1/2"	2.14.70	
05.24.06.03.04.**				3/4"		



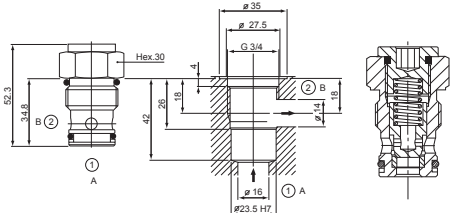
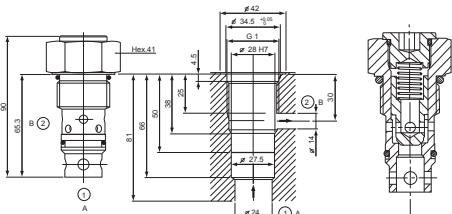
Technical Data	
Max. working pressure	210 bar
Flow max.	150 l/min
Weight	1.10 kg

** Denotes pressure range.



Check Valves

Poppet and Cartridge Type Check

Stock No.	Description	Max. Flow	Max. Pressure	Port Size	Page Ref. O.C. Cat.	List Price										
04.31.03.00.99.**	VU-12	60LPM	350 BAR	Cartridge	3.12.02											
 <p>CAVITY N.024</p>				<table><tr><th colspan="2">Technical Data</th></tr><tr><td>Installation torque</td><td>145-158 Nm</td></tr><tr><td>Max. working pressure</td><td>350 bar</td></tr><tr><td>Flow max.</td><td>60 l/min</td></tr><tr><td>Weight</td><td>0.165 kg</td></tr></table>			Technical Data		Installation torque	145-158 Nm	Max. working pressure	350 bar	Flow max.	60 l/min	Weight	0.165 kg
Technical Data																
Installation torque	145-158 Nm															
Max. working pressure	350 bar															
Flow max.	60 l/min															
Weight	0.165 kg															
04.31.02.00.99.**	VU-34	100 LPM	350 BAR	Cartridge	3.12.03											
 <p>CAVITY N.025</p>				<table><tr><th colspan="2">Technical Data</th></tr><tr><td>Installation torque</td><td>167-191 Nm</td></tr><tr><td>Max. working pressure</td><td>350 bar</td></tr><tr><td>Flow max.</td><td>100 l/min</td></tr><tr><td>Weight</td><td>0.430 kg</td></tr></table>			Technical Data		Installation torque	167-191 Nm	Max. working pressure	350 bar	Flow max.	100 l/min	Weight	0.430 kg
Technical Data																
Installation torque	167-191 Nm															
Max. working pressure	350 bar															
Flow max.	100 l/min															
Weight	0.430 kg															

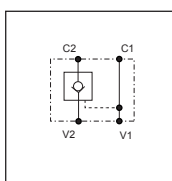
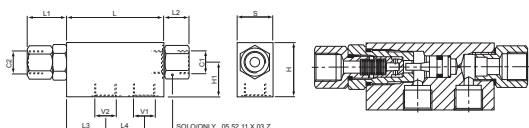
4

Pilot Operated Check Valves

Stock No.	Description	Max. Flow	Max. Pressure	Port Size	Page Ref. O.C. Cat.	List Price
05.52.01.10.03.**	VSO-SE	50 LPM	350 BAR	1/2"	4.12.01	
05.52.01.10.04.**		100 LPM		3/4"		
05.52.01.10.97.**		30 LPM		3/8"		

Pilot Operated Check Valves

Stock No.	Description	Max. Flow	Max. Pressure	Port Size	Page Ref. O.C. Cat.	List Price
05.52.11.10.03.**	VSO-SE-DLN	50 LPM	350 BAR	1/2"	4.12.03	
05.52.11.10.09.**		20 LPM		1/4"		



Technical Data

WARNING: Pilot ratio 6:1 is also available for 1/2 size (X=25)

Pilot ratio 9:1 is available for 1/4 size (X=37).

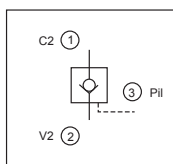
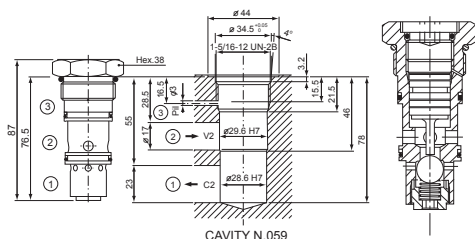
Max. working pressure	350 bar
-----------------------	---------

Flow see performance chart

35	38	38	25	38.5	95	32	50		1/2	3.2:1	0.49
35	38	20	-	36	80	30	50		3/8	4:1	0.47
35	35	20	-	33.5	70	24	40		1/4	4:1	0.39
S	L4	L3	L2	L1	L	H1	H		Y	Pilot Ratio	Weight kg

Pilot Operated, Cartridge Type Check

Stock No.	Description	Max. Flow	Max. Pressure	Port Size	Page Ref. O.C. Cat.	List Price
04.33.01.10.99.**	VSO-SEC-150	90 LPM	350 BAR	Cartridge	4.11.01	



Technical Data

Installation torque	142-155 Nm
---------------------	------------

Max. working pressure	350 bar
-----------------------	---------

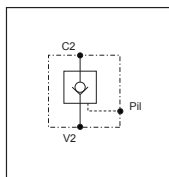
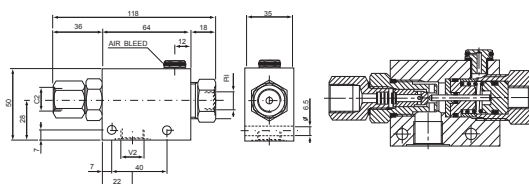
Flow max.	90 l/min
-----------	----------

Pilot ration	4 : 1
--------------	-------

Weight	0.375 kg
--------	----------

Pilot Operated, Vented Pilot Piston Check

Stock No.	Description	Max. Flow	Max. Pressure	Port Size	Page Ref. O.C. Cat.	List Price
05.52.24.00.02.**	VSO-SE-PS	30 LPM	350 BAR	3/8"	4.13.01	



Technical Data

WARNING: It is recommended to connect the air bleed port (G 1/8) to tank.

Installation torque	41-49 Nm (max 90°)
---------------------	--------------------

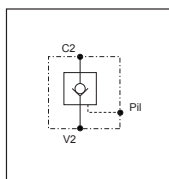
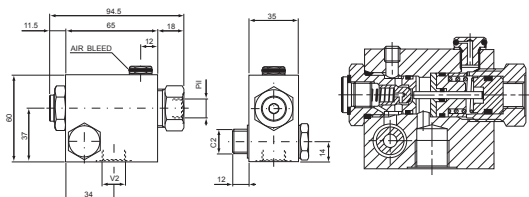
Max. working pressure	350 bar
-----------------------	---------

Flow max.	30 l/min
-----------	----------

Pilot ratio	10 : 1
-------------	--------

Weight	0.50 kg
--------	---------

05.52.22.00.02.**	VSO-SE-PS-FCV	30 LPM	350 BAR	3/8"	4.13.03	
-------------------	---------------	--------	---------	------	---------	--



Technical Data

WARNING: It is recommended to connect the air bleed port (G 1/8) to tank.

Installation torque	41-49 Nm (max 90°)
---------------------	--------------------

Max. working pressure	350 bar
-----------------------	---------

Flow max.	30 l/min
-----------	----------

Pilot ratio	10 : 1
-------------	--------

** Denotes pressure range.

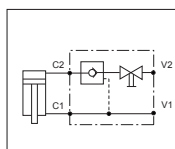
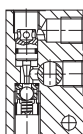
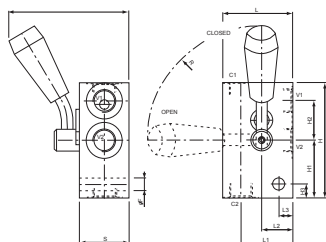


Check Valves

4

Pilot Operated Check with Manual Shut-Off

Stock No.	Description	Max. Flow	Max. Pressure	Port Size	Page Ref. O.C. Cat.	List Price
05.52.26.10.02.00	VSO-SE-DL-S	30 LPM	350 BAR	3/8"	4.14.02	
05.52.26.10.03.00		60 LPM		1/2"		



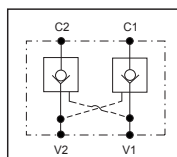
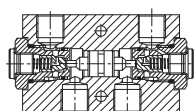
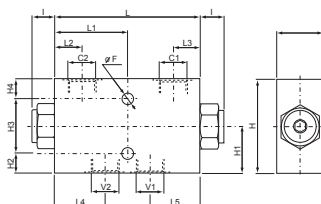
Technical Data

Max. working pressure	350 bar
Flow see performance graph in catalogue	

35	-	30	50	65	85	-	35	40.5	90.5	-	82			1/2	3.6:1	1.00
35	10	22	37	50	85	10	28	41.5	82.5	9	82			3/8	5.4:1	0.60
S	L3	L2	L1	L	I	H3	H2	H1	H	ØF	R			Y	Pilot Ratio	Weight kg

Dual, Pilot Operated Check

Stock No.	Description	Max. Flow	Max. Pressure	Port Size	Page Ref. O.C. Cat.	List Price
05.53.01.10.03.**	VSO-DE	50 LPM	350 BAR	1/2"	4.21.01	
05.53.01.10.04.**		100 LPM		3/4"		
05.53.01.10.97.**		30 LPM		3/8"		



Technical Data

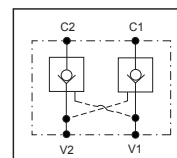
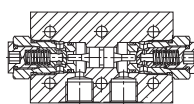
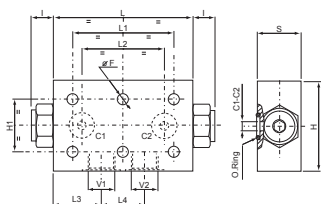
WARNING: Pilot ratio 6:1 is also available for 1/2 size (X=25)

Max. working pressure 350 bar

Flow see performance chart in catalogue

50	57.5	57.5	30	30	82.5	165	24.5	14.5	60	14.5	44.5	89	8.5	3/4	4:1	2.55
35	38	38	20.5	20.5	55	110	17.5	14.5	40	14.5	34.5	69	8.5	1/2	3.2:1	1.06
35	32	32	17	17	48	96	8.5	9.5	40	9.5	29.5	59	6.5	3/8	7:1	0.85
S	L5	L4	L3	L2	L1	L	I	H4	H3	H2	H1	H	F	Y	Pilot Ratio	Weight kg

05.53.02.10.02.**	VSO-DE-FCB	30 LPM	350 BAR	3/8"	4.21.02	
-------------------	------------	--------	---------	------	---------	--



Technical Data

WARNING: Pilot ratio 6:1 is also available for 1/2 size (X=25)

Max. working pressure 350 bar

Flow see performance chart in catalogue

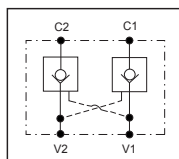
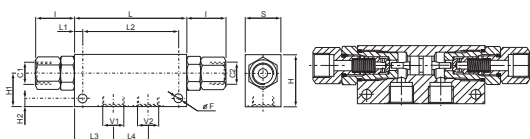
49	50	57.5	105	135	165	25	50	89	10.5			18.64x3.53	3/4	4:1	2.50
34	34	38	65	80	110	17.5	40	69	8.5			15.34x2.62	1/2	3.2:1	0.95
34	32	32	62	70	96	8.5	40	59	6.5			9.19x2.62	3/8	7:1	0.75
S	L4	L3	L2	L1	L	I	H1	H	F			O ring	Y	Pilot Ratio	Weight kg

** Denotes pressure range.



Dual, Pilot Operated Check

Stock No.	Description	Max. Flow	Max. Pressure	Port Size	Page Ref. O.C. Cat.	List Price
05.53.03.10.03.**	VSO-DE-L	50 LPM	350 BAR	1/2"	4.21.03	
05.53.03.10.04.**		100 LPM		3/4"		
05.53.03.10.09.**		20 LPM		1/4"		



WARNING: Pilot ratio 6:1 is also available for 1/2 size (X=25)

Pilot ratio 9:1 is available for 1/4 (X=37)

Max. working pressure	350 bar
-----------------------	---------

Flow see performance chart in catalogue

50	50	57.5	145	10	165	57	10	45	70	10.5		3/4	3.6:1	1.15
35	34	38	94	8	110	38.5	8	32	50	8.5		1/2	3.2:1	1.15
35	36	22	34	6	80	33	6	24	40	6.5		1/4	4:1	0.70
S	L4	L3	L2	L1	L	I	H2	H1	H	F		Y	Pilot Ratio	Weight kg

** Denotes pressure range.



Overcentre & Motion Control Valves

Pilot Assisted, Cartridge Type, Overcentre

Stock No.	Description	Max. Flow	Max. Pressure	Port Size	Page Ref. O.C. Cat.	List Price
04.52.02.03.99.**	VBSO-SEC-150	150 LPM	350 BAR	Cartridge	5.12.02	
<div><div></div></div>						

** Denotes pressure range.

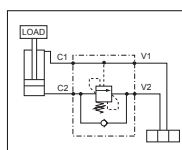
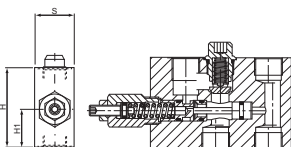
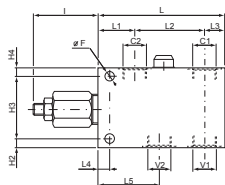


Overcentre & Motion Control Valves



Pilot Assisted Overcentre

Stock No.	Description	Max. Flow	Max. Pressure	Port Size	Page Ref. O.C. Cat.	List Price
05.41.01.03.03.**	VBSO-SE	120 LPM	350 BAR	1/2"	5.13.01	
05.41.01.03.04.**		140 LPM		3/4"		
05.41.01.10.03.**		120 LPM		1/2"		
05.41.01.10.04.**		140 LPM		3/4"		

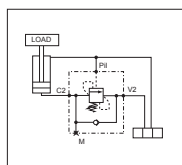
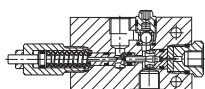
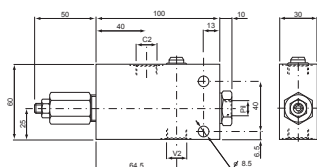


Technical Data

Max. working pressure	350 bar
Flow see performance chart in catalogue	

40	62.5	10	22	79	34	135	60	10	70	10	38	90	10.5	3/4	1.42
35	54.5	10	18	62.5	32.5	113	60	8	54	8	32	70	8.5	1/2	0.90
S	L5	L4	L3	L2	L1	L	I	H4	H3	H2	H1	H	F	Y	Weight kg

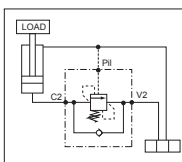
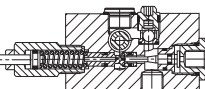
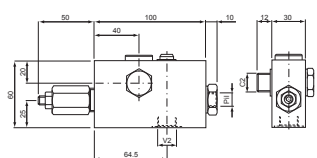
05.43.01.03.03.**	VBSO-SE-NBA	70 LPM	350 BAR	1/2"	5.14.02	
05.43.01.10.02.**		40 LPM		3/8"		
05.43.01.10.03.**		70 LPM		1/2"		
05.43.01.37.02.**		40 LPM		3/8"		



Technical Data

Max. working pressure	350 bar
Flow max.	40 l/min
Weight	0.67 kg

05.43.22.03.03.**	VBSO-SE-NBA-FCV	70 LPM	350 BAR	1/2"	5.14.03	
05.43.22.10.02.**		40 LPM		3/8"		
05.43.22.37.02.**		40 LPM		3/8"		



Technical Data

Installation torque	41-49 Nm (max 90°)
Max. working pressure	350 bar
Flow max.	40 l/min
Weight	0.9 kg

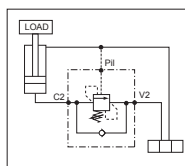
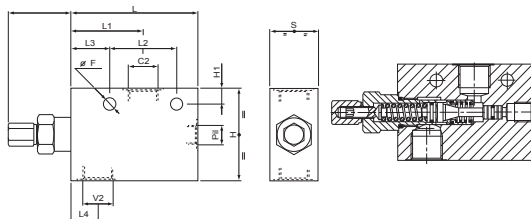
** Denotes pressure range.



Overcentre & Motion Control Valves

Pilot Assisted Overcentre

Stock No.	Description	Max. Flow	Max. Pressure	PortSize	Page Ref. O.C. Cat.	List Price
08.41.01.03.02.**	A-VBSO-SE-30	60 LPM	350 BAR	3/8"	5.12.11	
08.41.01.03.03.**				1/2"		
08.41.01.03.09.**				1/4"		

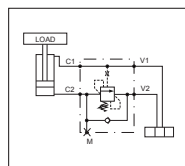
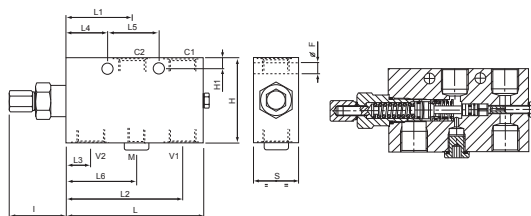


Technical Data

Max. pressure	350 bar
Flow see performance graph in catalogue	
Flow max.	60 l/min
Steel body	

35	19	25.6	47.6	51	91	45	11	65	8.5				1/2	1.49
30	19	25.6	47.6	51	91	45	7	55	8.5				3/8	1.08
30	19	25.6	47.6	51	91	45	7	55	8.5				1/4	1.13
S	L4	L3	L2	L1	L	I	H1	H	F				Y	Weight kg

08.45.16.03.02.**	A-VBSO-SE-30-PL	60 LPM	350 BAR	3/8"	5.12.21	
08.45.16.03.03.**				1/2"		

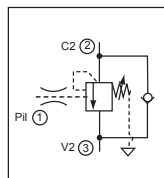
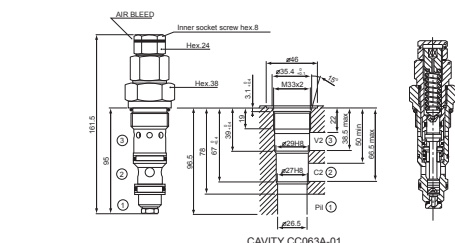


Technical Data

Max. pressure	350 bar
Flow see performance graph in catalogue	
Steel body	

35	54	40	32	19.5	91	52	109	45	8	65	8.5			1/2	1.81
30	-	40	32	19.5	91	52	109	45	8	55	8.5			3/8	1.30
30	-	40	32	19.5	91	52	109	45	8	55	8.5			1/4	1.30
S	L6	L5	L4	L3	L2	L1	L	I	H1	H	F			Y	Weight kg

04.59.03.03.99.**	VBSO-SEC-CCAP-33	170 LPM	350 BAR	Cartridge	5.17.50	
-------------------	------------------	---------	---------	-----------	---------	--



Technical Data

Installation torque	200-225 Nm
Max. working pressure	350 bar
Flow max.	170 l/min
Weight	0.67 kg

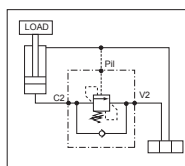
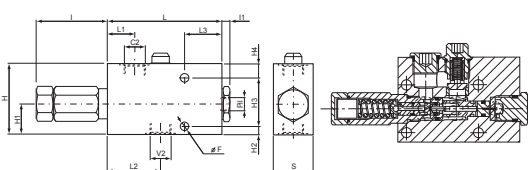
** Denotes pressure range.



Overcentre & Motion Control Valves

Pilot Assisted Overcentre

Stock No.	Description	Max. Flow	Max. Pressure	Port Size	Page Ref. O.C. Cat.	List Price
05.41.62.03.03.**	VBSO-SE-NA	80 LPM	350 BAR	1/2"	5.15.01	
05.41.62.03.04.**		120 LPM		3/4"		
05.41.62.03.05.**		220 LPM		1"		
05.41.62.10.03.**		80 LPM		1/2"		
05.41.62.10.04.**		120 LPM		3/4"		
05.41.62.10.05.**		220 LPM		1"		

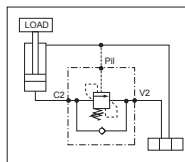
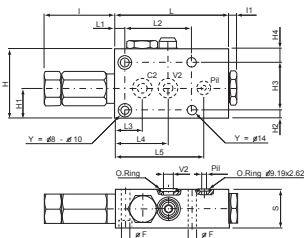


Technical Data

Max. working pressure	350 bar
Flow see performance chart in catalogue	

50	40.5	77	35	160	92.5	35	55	10	35	100	10.5	1	3.25
40	42.5	62	29	127.5	71.5	30	50	10	35	90	10.5	3/4	1.755
40	37.5	53.5	27.5	115	71.5	14	48	8	30	70	8.5	1/2	1.39
35	27.5	48.5	27.5	100	61	17	40	8	26.5	65	8.5	3/8	0.98
S	L3	L2	L1	L	I	H4	H3	H2	H1	H	F	Y	Weight kg

05.41.65.10.03.**	VBSO-SE-NA-FC	80 LPM	350 BAR	1/2"	5.15.02	
-------------------	---------------	--------	---------	------	---------	--

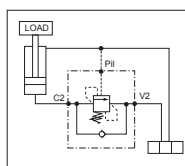
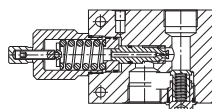
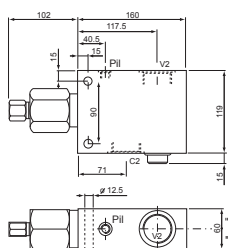


Technical Data

Max. working pressure	350 bar
Flow see performance chart in catalogue	

39	101	61	28	75	9	127.5	10	71.5	30	50	10	35	90	10.5	15.64x2.62	Ø14	1.74
39	89.5	53.5	27.5	67.5	10	115	10	71.5	14	48	8	32	70	8.5	15.34x2.62	Ø10	1.38
34	85.5	50	25.5	63.5	9	100	11	61	16	40	8	26.5	64	8.5	15.34x2.62	Ø8	0.97
S	L5	L4	L3	L2	L1	L	I1	I	H4	H3	H2	H1	H	F	O ring	Y	Weight kg

05.41.41.03.06.**	VBSO-SE-N	300 LPM	210 BAR	1-1/4"	5.15.05	
05.41.41.10.06.**						



Technical Data

Max. working pressure	210 bar
Flow max	300 l/min
Weight	4.45 kg

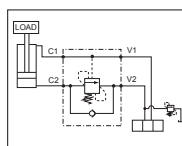
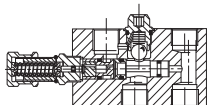
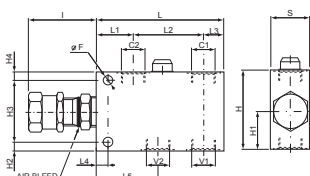
** Denotes pressure range.



Overcentre & Motion Control Valves

Pilot Assisted Overcentre

Stock No.	Description	Max. Flow	Max. Pressure	Port Size	Page Ref. O.C. Cat.	List Price
05.41.06.02.03.**	VBSO-SE-CC	120 LPM	350 BAR	1/2"	5.17.05	
05.41.06.02.04.**		140 LPM		3/4"		
05.41.06.10.03.**		120 LPM		1/2"		

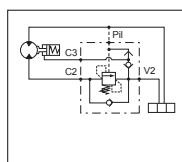
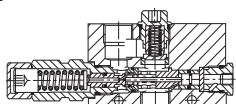
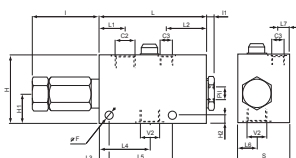


Technical Data

Max. working pressure	350 bar
Flow	see performance chart in catalogue

40	62.5	10	22	79	34	135	65	70	10	38	90	10.5	3/4	1.42
35	54.5	10	18	62.5	32.5	113	65	54	8	32	70	8.5	1/2	0.905
S	L5	L4	L3	L2	L1	L	I	H3	H2	H1	H	F	Y	Weight kg

05.41.81.03.03.**	VBSO-SE-NA-LC	80 LPM	350 BAR	1/2"	5.21.02	
05.41.81.03.04.**		120 LPM		3/4"		
05.41.81.03.05.**		220 LPM		1"		
05.41.81.10.03.**		80 LPM		1/2"		
05.41.81.10.04.**		120 LPM		3/4"		
05.41.81.10.05.**		220 LPM		1"		

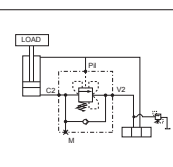
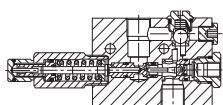
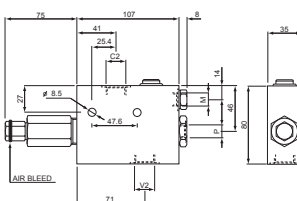


Technical Data

Max. working pressure	350 bar
Flow	see performance chart in catalogue

70	14	30	85	77	35	44	35	160	10	92.5	10	35	100	10.5	1	4.00
60	15	20	75	62.5	10	48.5	29	127.5	10	71.5	10	35	90	10.5	3/4	2.35
55	12	20	67.5	53.5	10	43.5	27.5	61	10	71.5	8	30	70	8.5	1/2	1.67
S	L7	L6	L5	L4	L3	L2	L1	L	I1	I	H2	H1	H	F	Y	Weight kg

05.43.31.10.03.**	VBSO-SE-CC-NBA	70 LPM	350 BAR	1/2"	5.17.11	
-------------------	----------------	--------	---------	------	---------	--



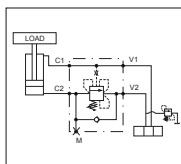
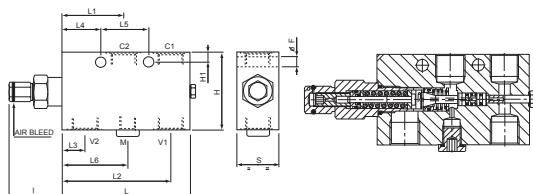
Technical Data

Max. working pressure	350 bar
Flow max.	70 l/min
Weight	1.05 kg

** Denotes pressure range.

Pilot Assisted Overcentre

Stock No.	Description	Max. Flow	Max. Pressure	Port Size	Page Ref. O.C. Cat.	List Price
08.45.17.03.03.**	A-VBSO-SE-CC-30-PL	60 LPM	350 BAR	1/2"	5.17.30	

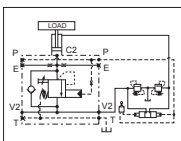
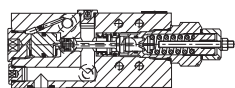
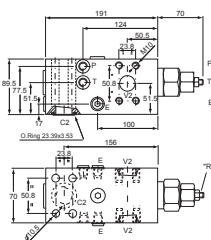


Technical Data

Max. pressure	350 bar
Flow see performance graph in catalogue	
Steel body	

35	54	40	32	19.5	91	52	109	53	8	65	8.5			1/2	1.85
30	-	40	32	19.5	91	52	109	53	8	55	8.5			3/8	1.33
30	-	40	32	19.5	91	52	109	53	8	55	8.5			1/4	1.15
S	L6	L5	L4	L3	L2	L1	L	I	H1	H	F			Y	Weight kg

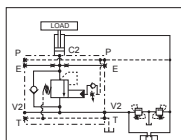
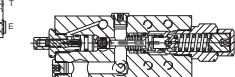
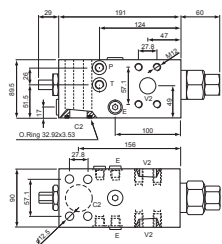
08.45.67.03.72.**	A-VBSO-SE-CCAP-EXC-R-42-FC	300 LPM	420 BAR	3/4"	5.17.90	
-------------------	----------------------------	---------	---------	------	---------	--



Technical Data

Max. pressure	420 bar
Flow max.	300 l/min
Weight	10.8 kg
Steel body	

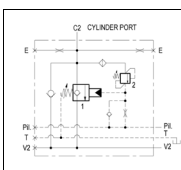
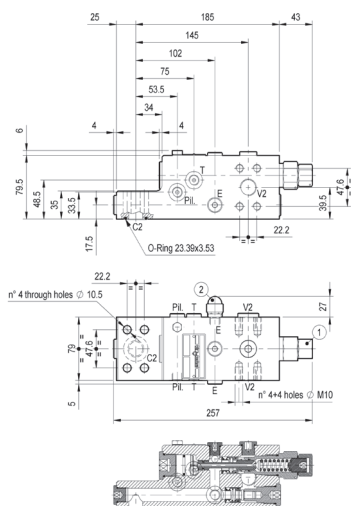
08.45.75.03.73.**	A-VBSO-SE-CCAP-42-FC	300 LPM	350 BAR	1"	5.17.75	
-------------------	----------------------	---------	---------	----	---------	--



Technical Data

Max. pressure	350 bar
Max. flow	300 l/min
Weight	10.8 kg
Steel Body	

08.47.84.03.72.**	A-VBC-33-FC	250 LPM	600 BAR	3/4"	5.18.37	
-------------------	-------------	---------	---------	------	---------	--



Technical Data

Max. pressure	420 bar
Flow max.	250 l/min
Weight	8.0 kg
Steel body	

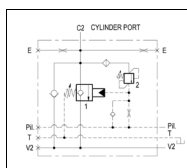
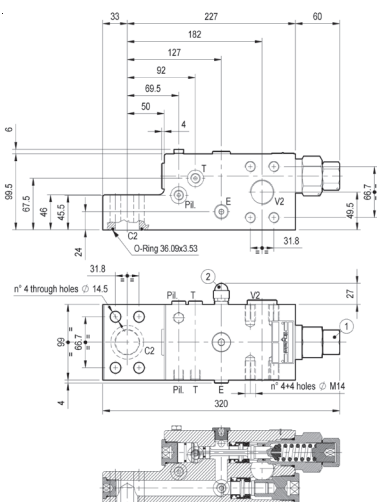
** Denotes pressure range.



Overcentre & Motion Control Valves

Pilot Assisted Overcentre

Stock No.	Description	Max. Flow	Max. Pressure	Port Size	Page Ref. O.C. Cat.	List Price
08.47.85.03.64.**	A-VBC42-FC	500 LPM	600 BAR	1-1/4"	5.18.45	



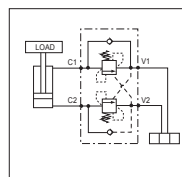
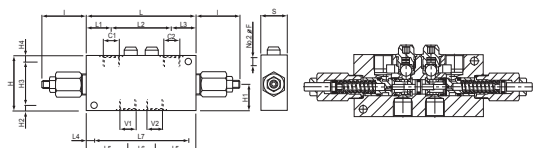
Technical Data

Max. pressure	420 bar
Flow max.	500 l/min
Weight	15.0 kg
Steel body	

4

Dual Pilot Assisted, Overcentre

Stock No.	Description	Max. Flow	Max. Pressure	Port Size	Page Ref. O.C. Cat.	List Price
05.42.01.03.03.**	VBSO-DE	120 LPM	350 BAR	1/2"	5.31.03	
05.42.01.03.04.**		140 LPM		3/4"		
05.42.01.10.03.**		120 LPM		1/2"		
05.42.01.10.04.**		140 LPM		3/4"		



Technical Data

Max. working pressure	350 bar
Flow see performance chart in catalogue	

40	155	50	62.5	10	34	107	34	175	60	10	70	10	38	90	10.5	3/4	2.10
35	125	36	54.5	10	32.5	80	32.5	145	60	8	54	8	32	70	8.5	1/2	1.37
S	L7	L6	L5	L4	L3	L2	L1	L	I	H4	H3	H2	H1	H	F	Y	Weight kg

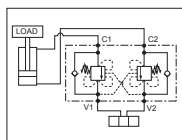
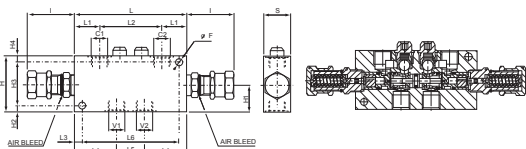
** Denotes pressure range.



Overcentre & Motion Control Valves

Pilot Assisted Overcentre

Stock No.	Description	Max. Flow	Max. Pressure	Port Size	Page Ref. O.C. Cat.	List Price
05.42.05.02.03.**	VBSO-DE-CC	120 LPM	350 BAR	1/2"	5.35.11	
05.42.05.02.04.**		140 LPM		3/4"		

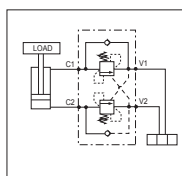
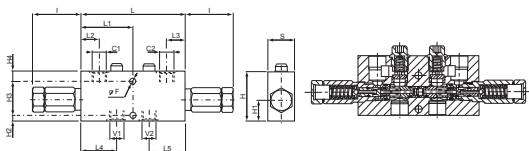


Technical Data

Max. working pressure	350 bar
Flow see performance chart in catalogue	

40	155	50	62.5	10	107	34	175	65	10	70	10	38	90	10.5	3/4	2.15
35	125	36	54.5	10	86	29.5	145	65	8	54	8	33	70	8.5	M22	1.45
35	125	36	54.5	10	80	32.5	145	65	8	54	8	33	70	8.5	1/2	1.45
S	L6	L5	L4	L3	L2	L1	L	I	H4	H3	H2	H1	H	F	Y	Weight kg

05.42.25.03.05.**	VBSO-DE-NA	220 LPM	350 BAR	1"	5.33.02	
05.42.25.10.03.**		80 LPM		1/2"	5.33.01	
05.42.25.10.05.**		220 LPM		1"	5.33.02	

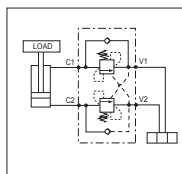
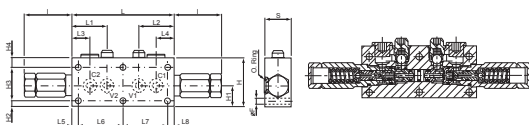


Technical Data

Max. working pressure	350 bar
Flow see performance chart in catalogue	

40	62	62	29	29	90	180	69	30	50	10	35	90	10.5		3/4	2.60
40	53.5	53.5	27.5	27.5	77.5	155	71.5	14	48	8	30	70	8.5		1/2	2.10
35	48.5	48.5	25.5	25.5	77.5	145	61.5	17	40	8	26.5	65	8.5		3/8	1.45
S	L5	L4	L3	L2	L1	L	I	H4	H3	H2	H1	H	F		Y	Weight kg

05.42.27.10.03.**	VBSO-DE-NA-FC	80 LPM	350 BAR	1/2"	5.33.03	
-------------------	---------------	--------	---------	------	---------	--



Technical Data

Max. working pressure	350 bar
Flow see performance chart in catalogue	

39	10	80	80	10	29	29	62	62	180	69	30	50	10	35	90	10.5	24.99x3.53	Ø14	6.9
39	10	67.5	67.5	10	27.5	27.5	53.5	53.5	155	71.5	14.5	48	7.5	31.5	70	8.5	15.34x2.62	Ø10	6.9
34	9	63.5	63.5	9	25.5	25.5	50	50	145	61.5	17.5	40	7.5	26.5	65	8.5	15.34x2.62	Ø8	6.9
S	L8	L7	L6	L5	L4	L3	L2	L1	L	I	H4	H3	H2	H1	H	F	O ring	Y	Weight kg

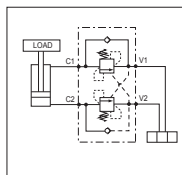
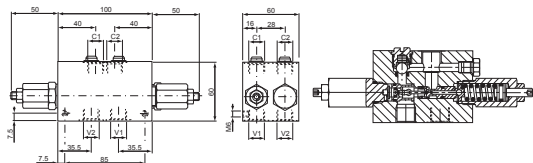
** Denotes pressure range.



Overcentre & Motion Control Valves

Pilot Assisted Overcentre

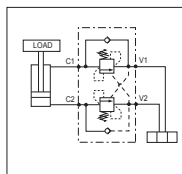
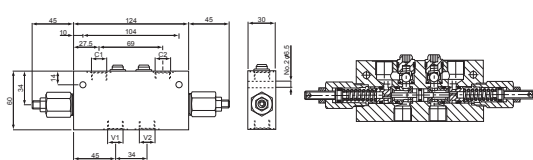
Stock No.	Description	Max. Flow	Max. Pressure	Port Size	Page Ref. O.C. Cat.	List Price
05.42.38.03.03.**	VBSO-DE-NBA	70 LPM	350 BAR	1/2"	5.32.02	
05.42.38.10.02.**		40 LPM		3/8"	5.32.01	



Technical Data

Max. working pressure	350 bar
Flow max.	40 l/min
Weight	1.35 kg

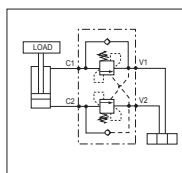
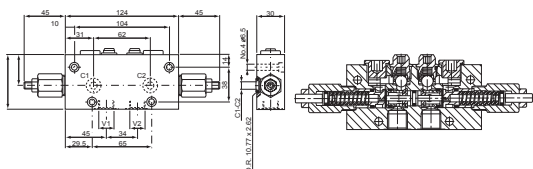
05.42.47.03.02.**	VBSO-DE-NN	40 LPM	350 BAR	3/8"	5.31.01	
-------------------	------------	--------	---------	------	---------	--



Technical Data

Max. working pressure	350 bar
Flow max.	40 l/min
Weight	0.80 kg

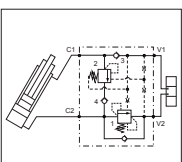
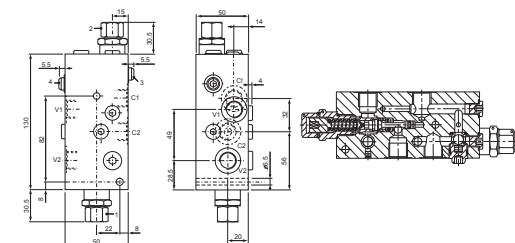
05.42.48.03.02.**	VBSO-DE-NN-FCB	40 LPM	350 BAR	3/8"	5.31.02	
-------------------	----------------	--------	---------	------	---------	--



Technical Data

Max. working pressure	350 bar
Flow max.	40 l/min
Weight	0.75 kg

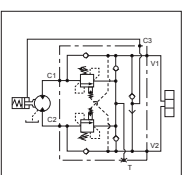
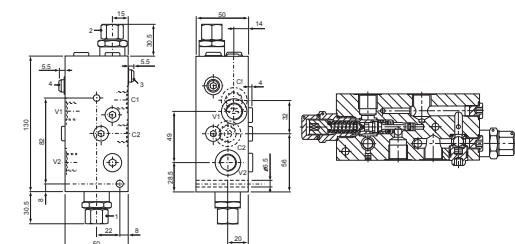
05.44.58.03.02.**	VBSO-DE-CR-78-PRPF	40 LPM	430 BAR	3/8"	5.37.16	
-------------------	--------------------	--------	---------	------	---------	--



Technical Data

Max. working pressure	430 bar
Flow max.	40 l/min
Weight	1.3 kg

05.71.45.03.04.**	VAA-B-SICN-ST-VF-150	120 LPM	350 BAR	3/4"	5.41.21	
05.71.47.03.04.**		120 LPM	350 BAR	3/4"	5.43.07	
05.71.47.03.05.**		200 LPM	350 BAR	1"	5.43.08	



Technical Data

Max. working pressure	350 bar
Flow max.	120 l/min
Weight	5.7 kg

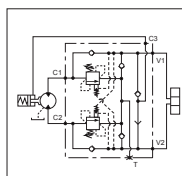
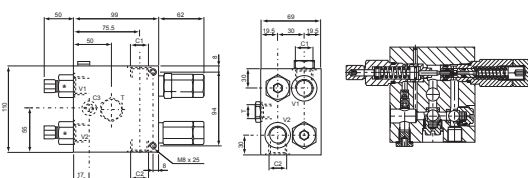
** Denotes pressure range.



Overcentre & Motion Control Valves

Pilot Assisted Overcentre

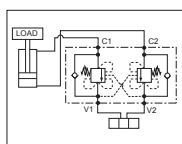
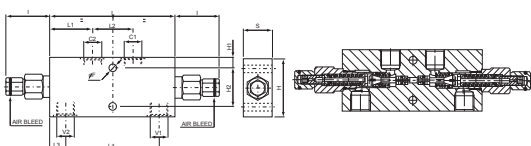
Stock No.	Description	Max. Flow	Max. Pressure	Port Size	Page Ref. O.C. Cat.	List Price
05.71.47.37.02.**	VAA-B-SICN-PDRM-VF-150	40 LPM	350 BAR	3/8"	5.43.06	



Technical Data

Max. working pressure	350 bar
Max. flow	40 l/min
Weight	3.50 kg

08.44.04.03.03.**	A-VBSO-DE-CC-30-CSL	60 LPM	350 BAR	1/2"	5.35.10	
-------------------	---------------------	--------	---------	------	---------	--

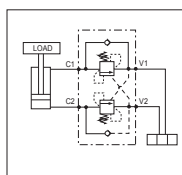
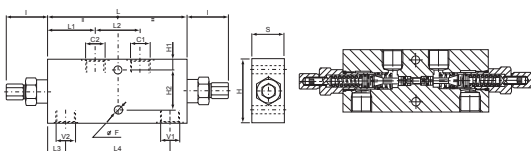


Technical Data

Max. pressure	350 bar
Flow see performance graph in catalogue	
Steel body	

35	43	11	65	53	112	19.5	48	51.5	151	8.5			1/2	2.9
30	38	8.5	55	53	112	19.5	48	51.5	151	8.5			3/8	2.5
S	H2	H1	H	I	L4	L3	L2	L1	L	F			Y	Weight kg

08.44.07.03.02.**	A-VBSO-DE-30-CSL	60 LPM	350 BAR	3/8"	5.34.11	
08.44.07.03.03.**		60 LPM		1/2"		

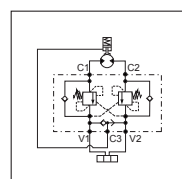
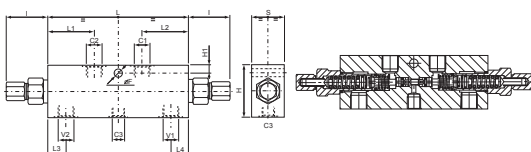


Technical Data

Max. pressure	350 bar
Flow see performance graph in catalogue	
Steel body	

35	43	11	65	45	112	19.5	48	51.5	151	8.5			1/2	2.2
30	38	8.5	55	45	112	19.5	48	51.5	151	8.5			3/8	1.7
S	H2	H1	H	I	L4	L3	L2	L1	L	F			Y	Weight kg

08.44.10.03.02.**	A-VBSO-DE-VF-30-CSL	60 LPM	250 BAR	3/8"	5.35.01	
08.44.10.03.03.**		60 LPM		1/2"		



Technical Data

Max. pressure	250 bar
Flow see performance graph	
Steel body	

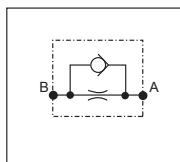
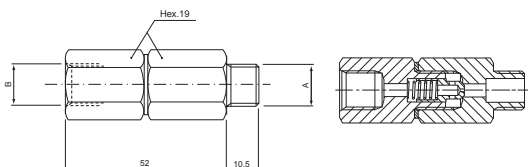
35	19.5	19.5	51.5	51.5	151	45	11	65	8.5				1/2	2.50
30	19.5	19.5	51.5	51.5	151	45	8.5	55	8.5				3/8	1.88
S	L4	L3	L2	L1	L	I	H1	H	F				Y	Weight kg

** Denotes pressure range.

Valves for Special Applications

One Way Restrictors

Stock No.	Description	Max. Flow	Max. Pressure	Port Size	Page Ref. O.C. Cat.	List Price
04.46.03.00.09.**	VF-MF	10 LPM	350 BAR	1/4"	8.12.01	



Technical Data

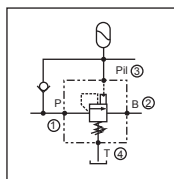
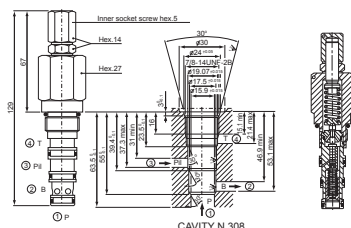
Installation torque	33-37 Nm
Max. working pressure	350 bar
Flow max. free flow (A-B)	10 l/min
Weight	0.10 kg

Z	09	06	00	07	10	12	11	03	08	05	01
Calibrated orifice	Ø0.3 mm*	Ø0.4 mm	Ø0.5 mm	Ø0.6 mm	Ø0.7 mm	Ø0.8 mm	Ø0.9 mm	Ø1.0 mm	Ø1.3 mm	Ø1.5 mm	Ø1.75 mm

*Hole Ø 0.5 with Ø 0.4 mm wire.

Cartridge Type, Priority Unloading

Stock No.	Description	Max. Flow	Max. Pressure	Port Size	Page Ref. O.C. Cat.	List Price
04.75.10.03.99.**	VMSP-78	40 LPM	210 BAR	Cartridge	7.11.11	

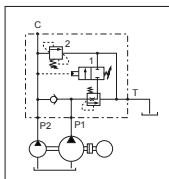
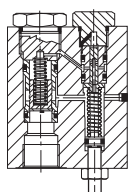
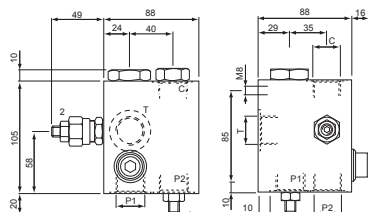


Technical Data

Installation torque	75-85 Nm
Max. working pressure	210 bar
Flow max.	40 l/min
Weight	0.28 kg

Pump Unloading

Stock No.	Description	Max. Flow	Max. Pressure	Port Size	Page Ref. O.C. Cat.	List Price
05.90.06.03.04.**	VEP-VSP2	30 LPM	350 BAR	3/4"	6.31.01	



Technical Data

Max. working pressure	P1 = 100 bar P2 = 350 bar
Max. flow of valve 2	30 l/min
Weight	2.5 kg

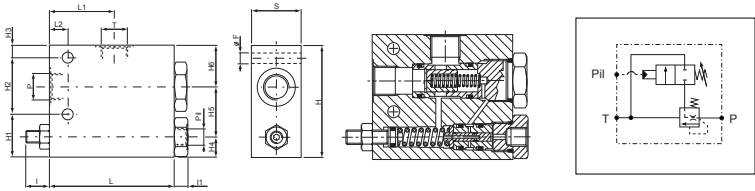
** Denotes pressure range.



Valves for Special Applications

Pilot Operated Unloading

Stock No.	Description	Max. Flow	Max. Pressure	Port Size	Page Ref. O.C. Cat.	List Price
05.93.04.03.**	BM-N	200 LPM	300 BAR	1/2"	7.11.01	

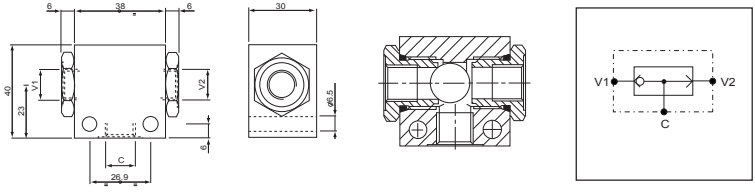


Technical Data	
Max. working pressure	300 bar
Flow see performance graph in catalogue	

40	49	40	16	25	45	35	105	11	20	15	52	100	8.5		3/4	1.35
40	34	40	16	10	45	35	90	11	20	15	52	100	8.5		1/2	1.30
S	H6	H5	H4	H3	H2	H1	H	I1	I	L2	L1	L	F		Y	Weight kg

Shuttle

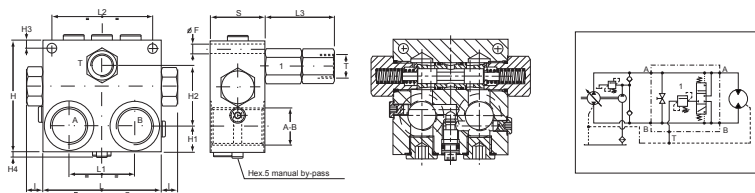
Stock No.	Description	Max. Flow	Max. Pressure	Port Size	Page Ref. O.C. Cat.	List Price
05.99.05.00.09	VFC-NC	50 LPM	350 BAR	1/4"	7.41.01	



Technical Data	
Max. working pressure	350 bar
Flow see performance graph in catalogue	
Weight	0.17 kg

For Hydrostatic Transmission Purge

Stock No.	Description	Max. Flow	Max. Pressure	Port Size	Page Ref. O.C. Cat.	List Price
08.64.05.00.05.00	A-VSL-R	100 LPM	350 BAR	1"	6.11.02	



Technical Data	
Max. working pressure	350 bar
Flow through shuttle valve and purge relief valve see performance graph in catalogue	
Steel body	

** Denotes pressure range.

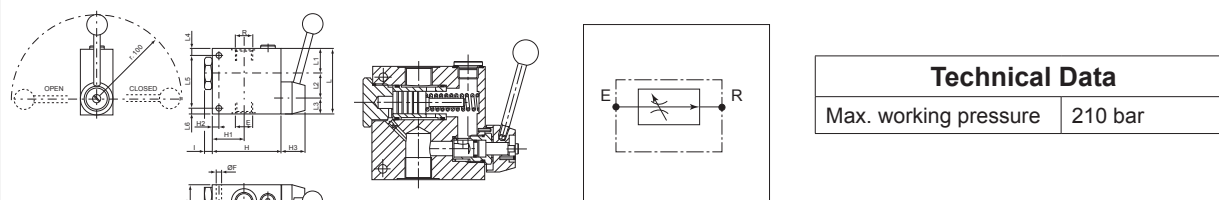


Flow Control Valves

4

Two-Way Type Pressure Compensated Flow Regulators

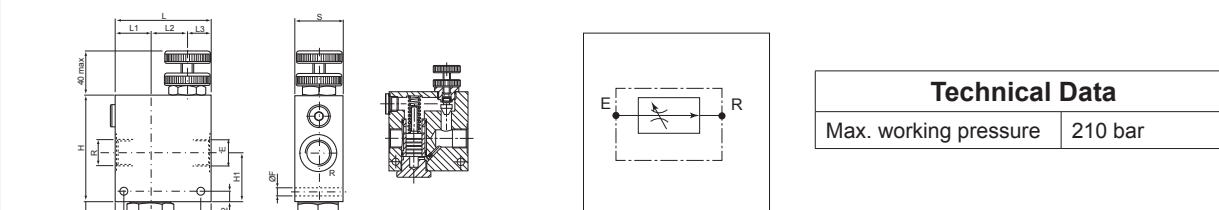
Stock No.	Description	Max. Flow	Max. Pressure	Port Size	Page Ref. O.C. Cat.	List Price
0M.22.03.50.03.**	VRFC2-L	55 LPM	210 BAR	1/2"	8.22.02	



Technical Data

Max. working pressure	210 bar
-----------------------	---------

0M.22.03.70.02.**	VRFC2	30 LPM	210 BAR	3/8"	8.22.01	
0M.22.03.70.03.**		55 LPM		1/2"		
0M.22.03.70.04.**		90 LPM		3/4"		
0M.22.03.70.05.**		190 LPM		1"		



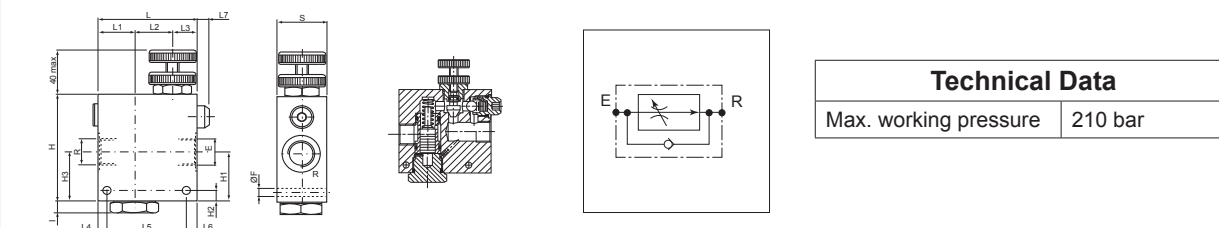
Technical Data

Max. working pressure	210 bar
-----------------------	---------

50	18	82	8	30	38	40	108	10	10	46	108	8.5	1	190	1.94
50	10	82	8	25	40	35	100	10	10	44	100	8.5	3/4	90	1.65
35	8	64	8	20	30	30	80	10	8	39	85	6.5	1/2	55	0.88
S	L6	L5	L4	L3	L2	L1	L	I	H2	H1	H	F	Y	Q	Weight kg

Two-Way Type Pressure Compensated Flow Regulators with Free Reverse Flow

Stock No.	Description	Max. Flow	Max. Pressure	Port Size	Page Ref. O.C. Cat.	List Price
0M.24.03.70.03	VRFC2-VU	55 LPM	210 BAR	1/2"	8.22.03	
0M.24.03.70.04		90 LPM		3/4"		



Technical Data

Max. working pressure	210 bar
-----------------------	---------

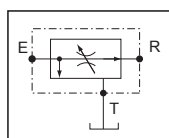
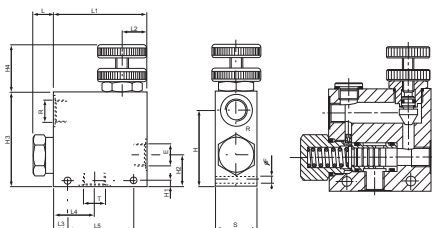
50	13	55	82	8	65	40	40	145	10	46	10	44	110	8.5	1	190	3.07
50	13	40	82	8	55	40	35	130	10	44	10	46	100	8.5	3/4	90	2.05
40	10	23	64	8	39	26	30	95	10	39	8	42	85	6.5	1/2	55	1.04
40	10	23	64	8	39	26	30	95	10	39	8	43.5	85	6.5	3/8	30	1.04
S	L7	L6	L5	L4	L3	L2	L1	L	I	H3	H2	H1	H	F	Y	Q	Weight kg

** Denotes pressure range.

Flow Control Valves

Three-Way Type Pressure Compensated Flow Regulators

Stock No.	Description	Max. Flow	Max. Pressure	Port Size	Page Ref. O.C. Cat.	List Price
0M.32.03.40.03.**	VRFC3	90 LPM	210 BAR	1/2"	8.31.01	
0M.32.03.70.03		90 LPM		1/2"		
0M.32.03.70.04		150 LPM		3/4"		

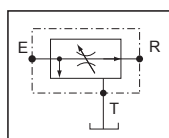
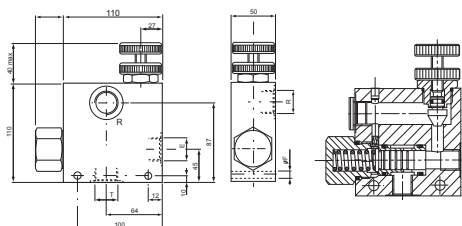


Technical Data

Max. working pressure	210 bar
-----------------------	---------

50	88	44	10	30	110	22	40	110	35	7	87	8.5	90	150	3/4	1.95
40	64	39	13	20	90	25	40	90	30	6	72	6.5	55	90	1/2	1.06
S	L5	L4	L3	L2	L1	L	H4	H3	H2	H1	H	F	QR	QE	Y	Weight kg

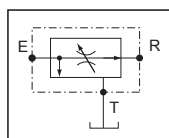
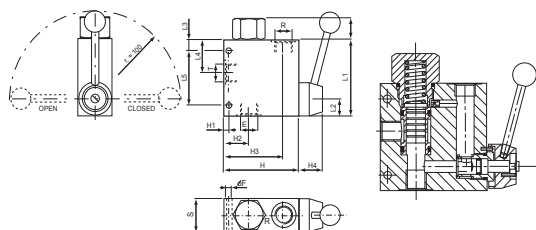
0M.32.03.40.05	VRFC3	280 LPM	210 BAR	1"	8.31.01A	
0M.32.03.70.05		280 LPM		1"		



Technical Data

Max. working pressure	210 bar
Weight	1.95 kg

0M.32.03.50.02	VRFC3-L	55 LPM	210 BAR	3/8"	8.31.02	
0M.32.03.50.03		90 LPM		1/2"		
0M.32.03.50.04		150 LPM		3/4"		

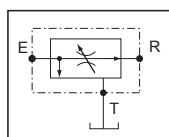
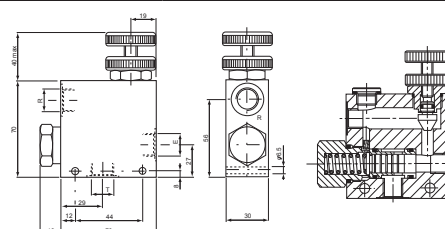


Technical Data

Max. working pressure	210 bar
-----------------------	---------

50	88	44	10	30	110	22	30	87	35	7	110	8.5	90	150	3/4	2.05
40	64	39	13	20	90	25	30	72	30	6	90	6.5	55	90	1/2	1.13
40	64	39	13	20	90	25	30	72	30	6	90	6.5	30	55	3/8	1.13
S	L5	L4	L3	L2	L1	L	H4	H3	H2	H1	H	F	QR	QE	Y	Weight kg

0M.32.03.70.97	VRFC310	40 LPM	210 BAR	3/8"	8.31.00	
----------------	---------	--------	---------	------	---------	--



Technical Data

Max. working pressure	210 bar
Weight	0.55 kg

** Denotes pressure range.

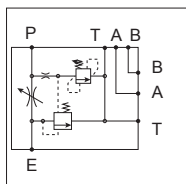
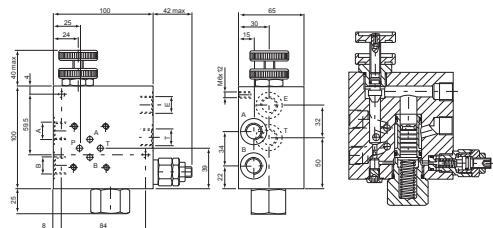


Flow Control Valves

4

Three-Way Type Pressure Compensated Flow Regulators with Relief

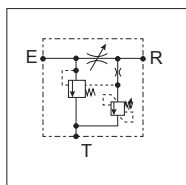
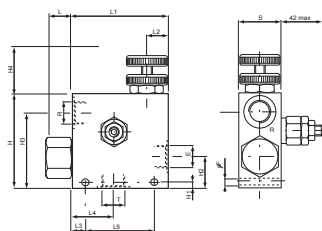
Stock No.	Description	Max. Flow	Max. Pressure	Port Size	Page Ref. O.C. Cat.	List Price
0M.33.02.70.02	VRFC3-VS10-CETOP 3	55 LPM	210 BAR	3/8"	8.31.13	



Technical Data

Max. working pressure	210 bar
Weight	1.83 kg

0M.33.03.40.03	VRFC3VS10	90 LPM	210 BAR	1/2"	8.31.11	
0M.33.03.70.02		55 LPM		3/8"		
0M.33.03.70.03		90 LPM		1/2"		
0M.33.03.70.04		150 LPM		3/4"		
0M.33.03.70.05		280 LPM		1"		



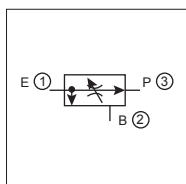
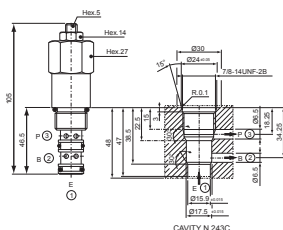
Technical Data

Max. working pressure	210 bar
-----------------------	---------

60	75	46	-	27	110	35	40	127	65	20	155	8.5	190	280	1	3.30
50	88	44	10	30	110	22	40	87	35	7	110	8.5	90	150	3/4	1.99
40	64	39	13	20	90	25	40	72	30	6	90	6.5	55	90	1/2	1.10
40	64	39	13	20	90	25	40	72	30	6	90	6.5	30	55	3/8	1.10
S	L5	L4	L3	L2	L1	L	H4	H3	H2	H1	H	F	QR	QE	Y	Weight kg

Three-Way, Combination Type, Cartridge Style, Pressure Compensated Flow Regulators

Stock No.	Description	Max. Flow	Max. Pressure	Port Size	Page Ref. O.C. Cat.	List Price
0M.41.01.03.06.00	VRFC3C-C	40 LPM	210 BAR	Cartridge	8.41.11	



Technical Data

Installation torque	64-72 Nm
Max. working pressure	210 bar
Weight	0.26 kg

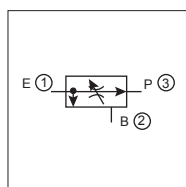
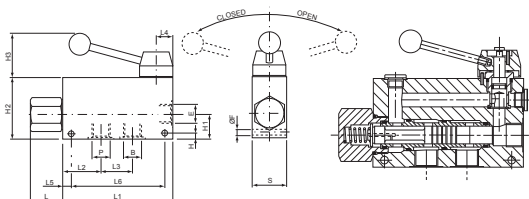
** Denotes pressure range.



Flow Control Valves

Three-Way, Combination Type, Pressure Compensated Flow Regulators

Stock No.	Description	Max. Flow	Max. Pressure	Port Size	Page Ref. O.C. Cat.	List Price
0M.42.03.50.03	VRFC3C-L	90 LPM	210 BAR	1/2"	8.41.02	

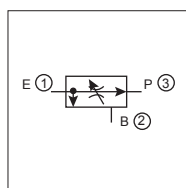
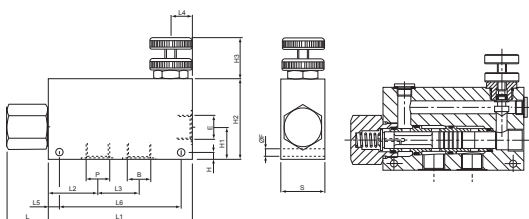


Technical Data

Max. working pressure	210 bar
QE = Max. admitted inlet flow "E" port l/min	
QP = Max. delivery in priority "P" port l/min	

50	135	10	25	44	54	155	35	40	90	35	7	8.5	90	150	3/4	2.60
40	110	10	20	37	45	130	38	40	70	28	6	6.5	55	90	1/2	1.40
40	110	10	20	37	45	130	38	40	70	28	6	6.5	30	55	3/8	1.40
S	L6	L5	L4	L3	L2	L1	L	H3	H2	H1	H	F	QP	QE	Y	Weight kg

0M.42.03.70.02	VRFC3C	55 LPM	210 BAR	3/8"	8.41.01	
0M.42.03.70.03		90 LPM		1/2"		
0M.42.03.70.04		150 LPM		3/4"		
0M.42.03.70.05		380 LPM		1"		



Technical Data

Max. working pressure	210 bar
QE = Max. admitted inlet flow "E" port l/min	
QP = Max. delivery in priority "P" port l/min	

70	130	10	27	56.5	48	150	54	40	130	65	10	8.5	190	380	1	4.35
50	135	10	25	44	54	155	35	40	90	35	7	8.5	90	150	3/4	2.50
40	110	10	20	37	45	130	38	40	70	28	6	6.5	55	90	1/2	1.30
40	110	10	20	37	45	130	38	40	70	28	6	6.5	30	55	3/8	1.30
S	L6	L5	L4	L3	L2	L1	L	H3	H2	H1	H	F	QP	QE	Y	Weight kg

** Denotes pressure range.



Flow Control Valves

Three-Way, Combination Type, Pressure Compensated Flow Regulators with Double By-Pass, Relief and Solenoid Control

Stock No.	Description	Max. Flow	Max. Pressure	Port Size	Page Ref. O.C. Cat.	List Price
0M.43.12.80.03.**	A-VRFC3C-VEI-VS-2E	100 LPM	350 BAR	1/2"	8.61.01	
0M.43.12.80.04.**		200 LPM		3/4"		

0M.43.12.80.03.**

0M.43.12.80.04.**

K

SYMBOL

43

44

Technical Data	
Max. working Pressure	210 bar
QE = Max. admitted inlet flow "E" port - 90 l/min	
QP = Max. delivery in priority flow "P" port - 55 l/min	
Weight	1.3 kg

4

Three-Way, Combination Type, Pressure Compensated Flow Regulators with Relief and Solenoid Control

Stock No.	Description	Max. Flow	Max. Pressure	Port Size	Page Ref. O.C. Cat.	List Price
0M.43.20.80.03.**	A-VRFC3C3-VEI-VS-PT	100 LPM	350 BAR	1/2"	8.63.01	
0M.43.20.80.04.**		200 LPM		3/4"		
0M.43.20.80.05.**		300 LPM		1"		
0M.43.20.80.06.**		400 LPM		1-1/4"		

03 - 04

05 - 06

Technical Data	
Max. inlet pressure in "E"	350 bar
Max. regulated "P" pressure	210 bar
Back pressure on "T"	< 1.5 bar
Steel Body	

31	18	70	86	54.5	62.5	88.5	48	76	190	57	18	90	14	92	40	38	130	8.5	06	12.5
30	19.5	60	74.5	46.5	56.5	78	36.5	76	173	58	15	90	13.5	80.5	40	38	120	8.5	05	9.0
27.5	19.5	50	59	37	44	61	34	50	140	65	13.5	73	13.5	69.5	50	38	100	8.5	04	4.8
33.5	24.5	40	54.5	35.5	38	56.5	29.5	50	130	66	8.5	73	12.5	60	50	38	90	8.5	03	3.4
S2	S1	S	L6	L5	L4	L3	L2	L1	L	I	H6	H5	H4	H3	H2	H1	H	F	Y	Weight kg

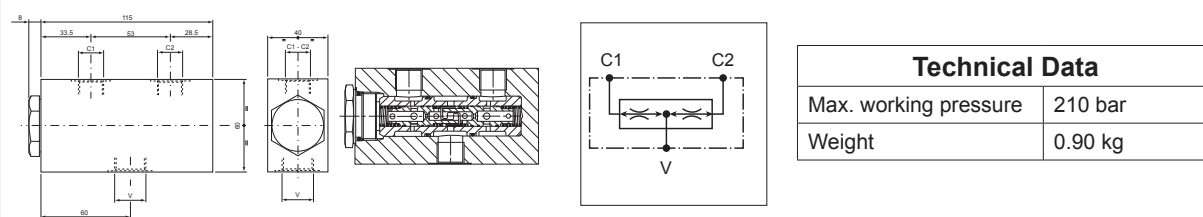
** Denotes pressure range.



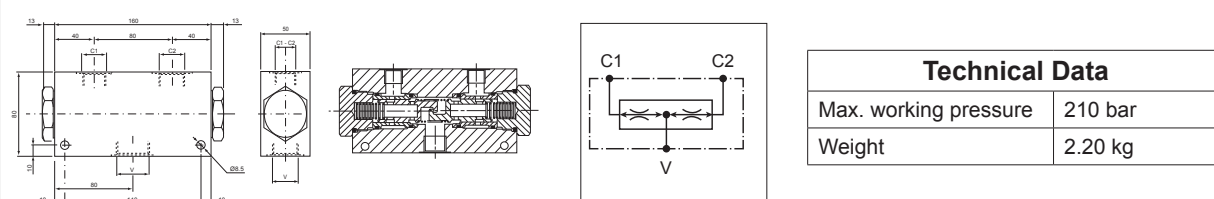
Flow Control Valves

Flow Dividers - Combiners

Stock No.	Description	Max. Flow	Max. Pressure	Port Size	Page Ref. O.C. Cat.	List Price
0M.51.03.90.02.11	DRF	11 LPM	210 BAR	3/8"	8.51.01	
0M.51.03.90.02.22		22 LPM				
0M.51.03.90.02.55		5.8 LPM				
0M.51.03.90.03.22		22 LPM		1/2"		
0M.51.03.90.03.38		38 LPM				



0M.51.03.90.04.52	DRF	52 LPM	210 BAR	3/4"	8.51.02	
0M.51.03.90.04.95		95 LPM				
0M.51.03.90.05.15		150 LPM		1"	8.51.02A	



** Denotes pressure range.