

SECTION 1

Mobile Directional Control Valves

<u>Make</u>	<u>Model</u>	<u>Page</u>
Hydrocontrol	HCM45	1.01
Galtech	Q35	1.02
Bucher	HDM11P	1.03
Bucher	HDM11S	1.04
Galtech	Q25	1.05
Galtech	Q45	1.06
Galtech	Q25/45 Accessories	1.07
Galtech	Q75	1.08
Galtech	Q95	1.09
Galtech	Q75/95 Accessories	1.10
Bucher	HDM18	1.11
Cross	B Series	1.12
Cross	C Series	1.13
Prince	LS & RD Series	1.14
Bucher	HDS11	1.15~1.16
Bucher	HDS15	1.17~1.19
Bucher	HDS20	1.20~1.21
Bucher	HDS30	1.22~1.23
Hydrocontrol	HC-D4	1.24
Hydrocontrol	HC-D6	1.25
Hydrocontrol	HC-D4/6 Accessories	1.26
Hydrocontrol	HC-D16	1.27
Hydrocontrol	HC-D20	1.28
Hydrocontrol	HC-D25	1.29
Hydrocontrol	HC-D20/25 Accessories	1.30
Hydrocontrol	HC-D40	1.31
NEM	NVD2	1.32~1.33
Hydrocontrol	HCMV99	1.34~1.35
Cross	VS Series	1.36
Cross	SD Series	1.36
Galtech	D3V Series	1.37
Galtech	IF Series	1.37
Galtech	DDF3VAP Series	1.38
Galtech	D4V Series	1.38
Galtech	D6V Series	1.39
Galtech	D8V Series	1.39
Made In Italy	Special Diverter Valves	1.40~1.41
Various	Cable Remote Controls	1.42~1.43
Hydrocontrol	Remote Controls	1.44~1.46





HCM45

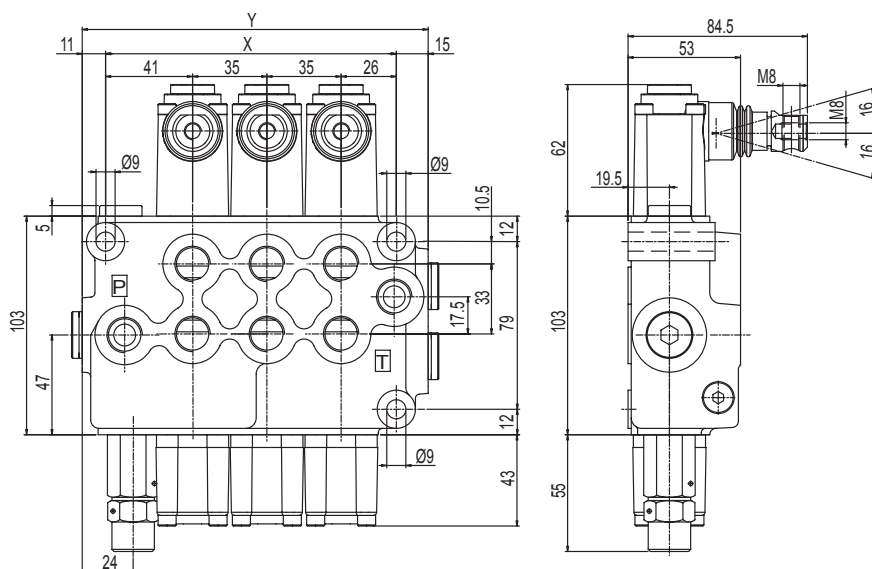
Monoblock Directional Control Valve Manually Operated

(COMMON LOAD CHECK ON INLET)

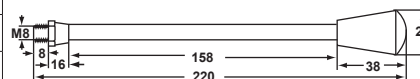
Stock No.	Model Code	No. of Spools	Recommended Maximum Flow		Recommended Max. Pressure		Port Size	List Price
HC52691	HCM45/1	1	45 LPM	12 US GPM	350 BAR	5000 PSI	3/4" UNO	
HC52693	HCM45/2	2						
HC52692	HCM45/3	3						
HC52680	HCM45/4	4						
HC52683	HCM45/5	5						
HC63170	HCM45/6	6						
HC52690	HCM45/1 Float	1						

All Ports: SAE 08 (3/4" UN O'Ring.)

Important Note For HCM45/1 Only:
Use of the High Pressure Carry-Over vents relief to HPC Port.

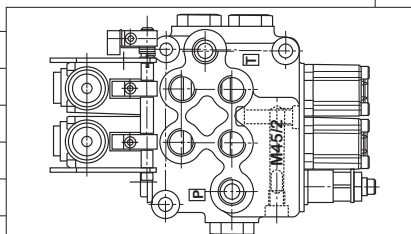


Code	HCM45/1	HCM45/2	HCM45/3	HCM45/4	HCM45/5	HCM45/6
Dim. X	67	102	137	172	207	242
Dim. Y	93	128	163	198	233	268
Weight (Kg)	2.7	4.1	5.5	6.9	8.3	9.7



HCM45 Options and Accessories

Stock No.	Model Code	Description	List Price
320872007	F002A	Detent Kit - 3 Position	
320872008	F003A	Detent Kit - 2 Position - Handle 'Out'	
320872009	F004A	Detent Kit - 2 Position - Handle 'In'	
	F005A	4th Position Float Spool Kit	
320772004	F009A	Detent Kit - 2 Position	
320772005	F010A	Detent Kit - 2 Position	
320772006	F013A	Spring Centre with Thru Rod M8	
321172001	F020A	Pneumatic Pilot Kit	
413010210		Power Beyond/Closed Centre Plug (Loose supplied)	
430172001	XX	'No Relief' Plug	
HC52684	MICRO H013	HCM45/1 Microswitch Provision	
HC52685	MICRO H013	HCM45/2 Microswitch Provision	
HC63163	MICRO H013	HCM45/3 Microswitch Provision	
HC52686	MICRO H013	HCM45/4 Microswitch Provision	
HC63164	MICRO H013	HCM45/5 Microswitch Provision	
HC63165	MICRO H013	HCM45/6 Microswitch Provision	



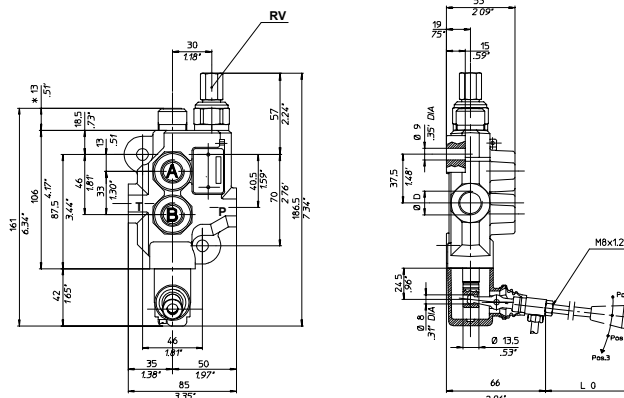


HDM140

Monoblock Directional Control Valve Manually Operated

(SINGLE SPOOL ONLY - NO POWER BEYOND OPTION)

Stock No.	Model Code	Recommended Maximum Flow		Recommended Max. Pressure		Port Size	List Price
051417006	HDM140/1K05-140/A01	40 LPM	10 US GPM	320 BAR	4600 PSI	3/4" UNO	



HDM40 Options and Accessories

Stock No.	Model Code	Description	List Price
768520010	03	Detent Kit - 3 Position	
651209010	Type 'G'	Single Acting Spool (Not available as a spare part)	
651207010	Type 'C'	Motor Spool (Not available as a spare part)	
SET	SET	Pre-Set Relief Valve (Other than factory set @ 140 Bar)	

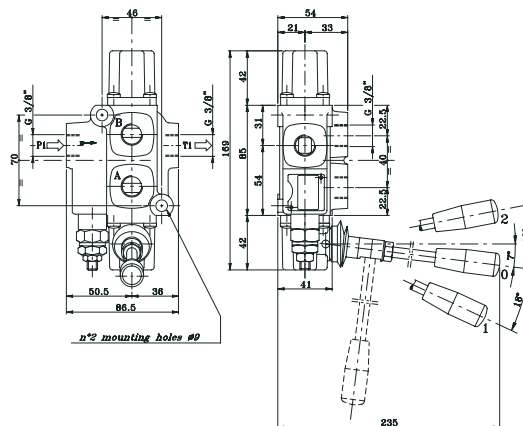
Q35



Monoblock Directional Control Valve Manually Operated

(SINGLE SPOOL ONLY - NO POWER BEYOND OPTION)

Stock No.	Model Code	Recommended Maximum Flow		Recommended Max. Pressure		Port Size	List Price
Q35103A1M1	Q35FSN103A1M1	40 LPM	10 US GPM	300 BAR	4350 PSI	3/4" UNO	



Q35 Options and Accessories

Stock No.	Model Code	Description	List Price
03743R303	R3	Detent Kit - 3 Position	
03661P1N	P1N	Pneumatic Pilot Kit	
03622A803	A8	Cable Connector Kit	

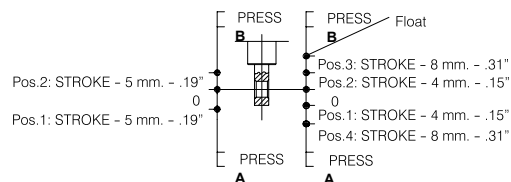
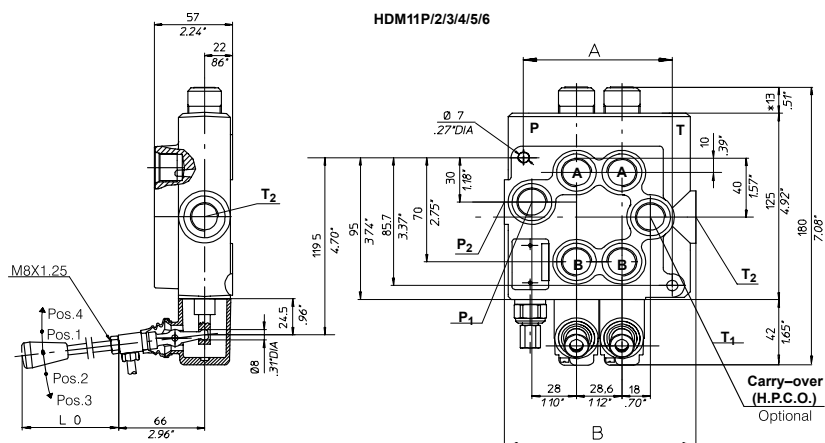


HDM11P

Monoblock Directional Control Valve Manually Operated Standard Double Acting - Spring Centred

(COMMON LOAD CHECK ON INLET)

Stock No.	Model Code	No. of Spools	Recommended Maximum Flow		Recommended Max. Pressure		Port Size	List Price
061127006	HDM11P/2K12150AA01	2	40 LPM	10 US GPM	300 BAR	4300 PSI	3/4" UNO	
061137011	HDM11P/3K12150AAA01	3						
061147005	HDM11P/4K12150AAAA01	4						
061157002	HDM11P/5K12150AAAAA01	5						
061167006	HDM11P/6K12150AAAAAA01	6						



No. of Sections	HDM11P/2	HDM11P/3	HDM11P/4	HDM11P/5	HDM11P/6
Dimension A	93.6	122.2	150.8	179.4	208
	3.68"	4.81"	5.93"	7.06"	8.18"
Dimension B	128.6	157.2	185.8	214.4	243
	5.06"	6.19"	7.31"	8.44"	9.56"

HDM11P Options and Accessories

Stock No.	Model Code	Description	List Price
768520010	Type 03	Detent Kit - 3 Position (03)	
768520050	Type 05	Detent Kit - 2 Position 'Out' (05)	
768530010	Type 02	Detent Kit - 2 Position 'In' (02)	
768540030	Type 04	4th Position Float Spool Kit <u>(Not available as a spare part)</u>	
621209010	Type G	Single Acting Spool <u>(Not available as a spare part)</u>	
651207010	Type C	Motor Spool <u>(Not available as a spare part)</u>	
SET	SET	Pre-set Relief Valve (Other than factory set @ 150 bar)	
413010210		Power Beyond Plug	
413010210		Closed Centre Plug	
775920200	Type L130	'Plus' Axis Joystick Kit (per Joystick Assembly)	
778400140		No Relief Valve Kit	
760900030	Type L102	Cable Connector Kit	
768610500	Type 30	Micro Switch Provision - Position '1' (per Spool)	
768610600	Type 32	Micro Switch Provision - Position '2' (per Spool)	
768610640	Type 34	Micro Switch Provision - Position '1' & '2' (per Spool)	



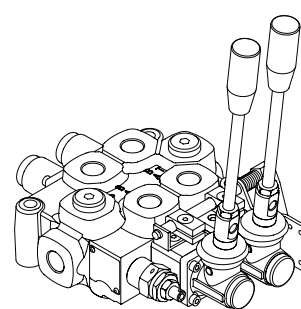
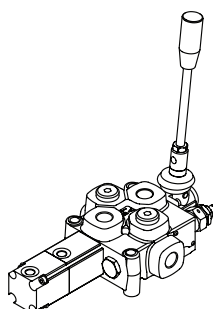
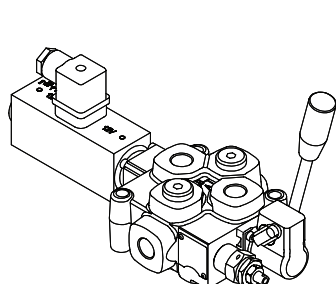
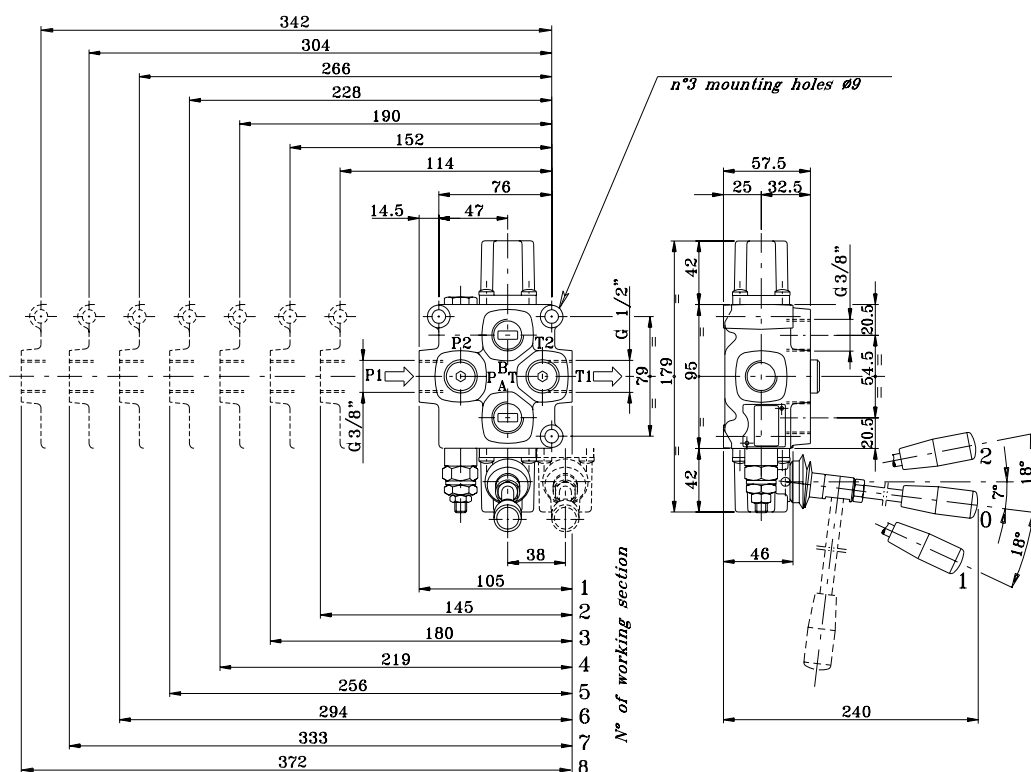


Q25

Monoblock Directional Control Valve Manually Operated Standard Double Acting - Spring Centred

(COMMON LOAD CHECK ON INLET)

Stock No.	Model Code	No. of Spools	Recommended Maximum Flow		Recommended Max. Pressure		Port Size	List Price
Q251103A1M1	Q251EF1SN103A1M1F3DS	1	45 LPM	12 US GPM	350 BAR	5075 PSI	3/8" BSPP	
Q252103A1M1	Q252EF1SN2X103A1M1F3DS	2						
Q253103A1M1	Q253EF1SN3X103A1M1F3DS	3			320 BAR	4640 PSI		
Q254103A1M1	Q254EF1SN4X103A1M1F3DS	4			300 BAR	4350 PSI		
Q255103A1M1	Q255EF1SN5X103A1M1F3DS	5						
Q256103A1M1	Q256EF1SN6X103A1M1F3DS	6						
Q257103A1M1	Q257EF1SN7X103A1M1F3DS	7						
Q258103A1M1	Q258EF1SN8X103A1M1F3DS	8						



Q25 Options and Accessories see Page 1.07

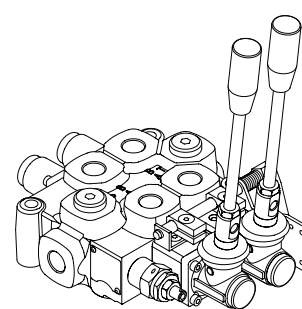
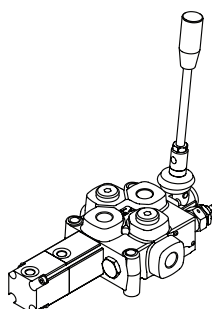
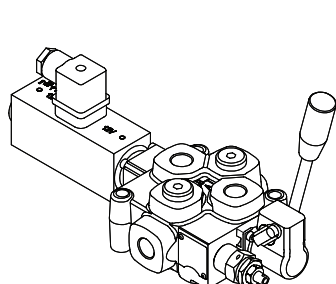
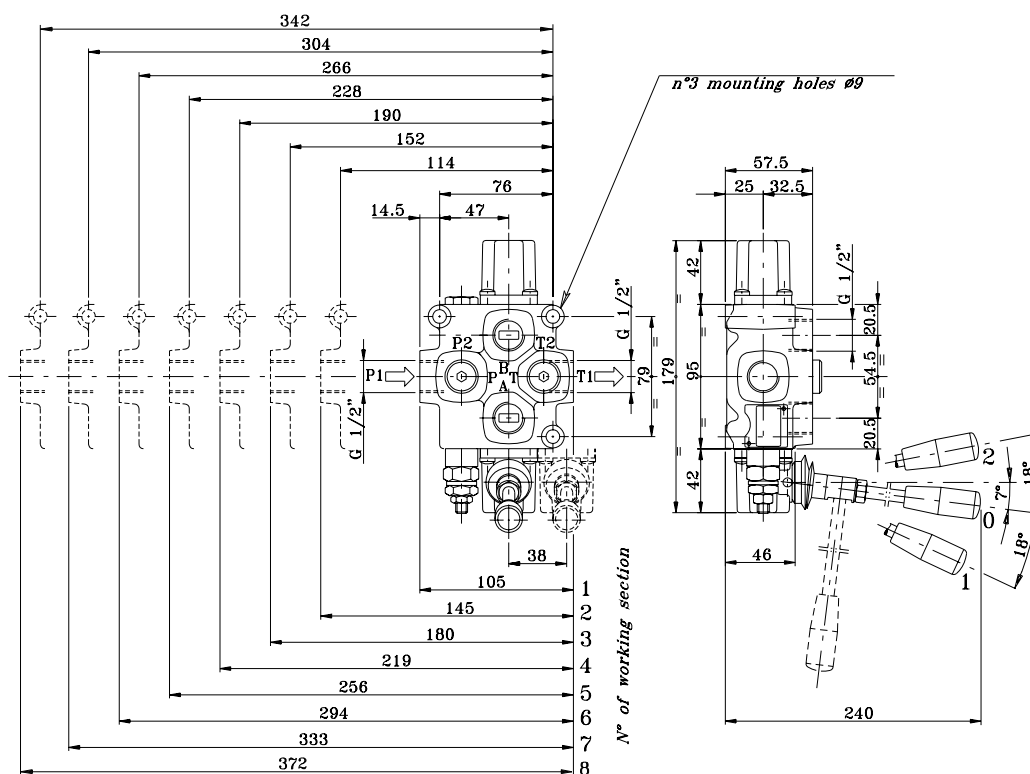


Q45

Monoblock Directional Control Valve Manually Operated Standard Double Acting - Spring Centred

(COMMON LOAD CHECK ON INLET)

Stock No.	Model Code	No. of Spools	Recommended Maximum Flow		Recommended Max. Pressure		Port Size	List Price
Q451103A1M1	Q451EF1SN103A1M1F3DS	1	45 LPM	12 US GPM	350 BAR	5075 PSI	1/2" BSPP	
Q452103A1M1	Q452EF1SN2X103A1M1F3DS	2						
Q453103A1M1	Q453EF1SN3X103A1M1F3DS	3			320 BAR	4640 PSI		
Q454103A1M1	Q454EF1SN4X103A1M1F3DS	4			300 BAR	4350 PSI		
Q455103A1M1	Q455EF1SN5X103A1M1F3DS	5						
Q456103A1M1	Q456EF1SN6X103A1M1F3DS	6						
Q457103A1M1	Q457EF1SN7X103A1M1F3DS	7						
Q458103A1M1	Q458EF1SN8X103A1M1F3DS	8						



Q45 Options and Accessories see Page 1.07

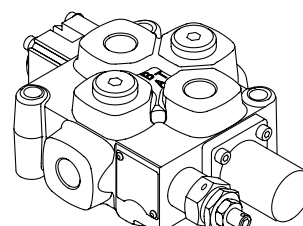
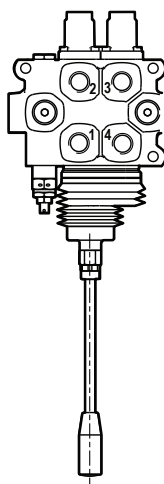
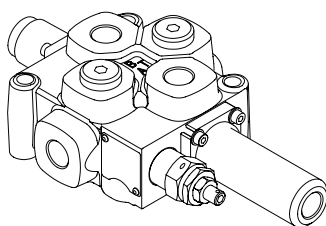


Q25 / Q45

1

Q25 / Q45 Options and Accessories

Stock No.	Model Code	Description	List Price
03732M203	M2	Offset Kit 2 Position 0-1 Centred 0	
03733M303	M3	Offset Kit 2 Position 0-2 Centred 0	
03735M412	M4 (1-2)	Offset Kit Handle In	
03735M421	M4 (2-1)	Offset Kit Handle Out	
03741R103	R1	Detent Kit - 2 Position Handle Out	
03742R203	R2	Detent Kit - 2 Position Handle in	
03743R303	R3	Detent Kit - 3 Position	
03661P1N	P1N	Pneumatic Pilot Kit	
03661P1NP	P1NP	Pneumatic Pilot Kit - Proportional	
03779H1	H1	Hydraulic Pilot Kit	
03785H5	H5	Hydraulic Pilot Kit	
03792C2C3	C2/C3	Cam Control Kit	
03799RTL	RTL	Rotary Control	
03622A8	A8	Cable Connector Kit - 2 Piece	
03622A803	A803	Cable Connector Kit - 1 Piece	
03637A15DR	A15	'Plus' Axis Joystick	
A1D4	A1D41	Electric Control	
126A1R10Z1	126A1R10Z1	Float 4 Position Spool Kit	
N1A110-1	N1A1-1	Micro Switch Provision - 1 Spool	
N1A110-2	N1A1-2	Micro Switch Provision - 2 Spool	
N1A110-3	N1A1-3	Micro Switch Provision - 3 Spool	
N1A110-4	N1A1-4	Micro Switch Provision - 4 Spool	
N1A110-5	N1A1-5	Micro Switch Provision - 5 Spool	
N1A110-6	N1A1-6	Micro Switch Provision - 6 Spool	
N1A110-7	N1A1-7	Micro Switch Provision - 7 Spool	
N1A110-8	N1A1-8	Micro Switch Provision - 8 Spool	
03743R1K03	R1K	Pressure Kickout Handle Out	
02566F6D	F6D - Q25	Power Beyond Sleeve - 3/8" BSPP - Q25	
04566F6D	F6D - Q45	Power Beyond Sleeve - 1/2" BSPP - Q45	
02567F16D	F16D - Q25	Closed Centre Plug - Q25	
04567F16D	F16D - Q45	Closed Centre Plug - Q45	





Q75

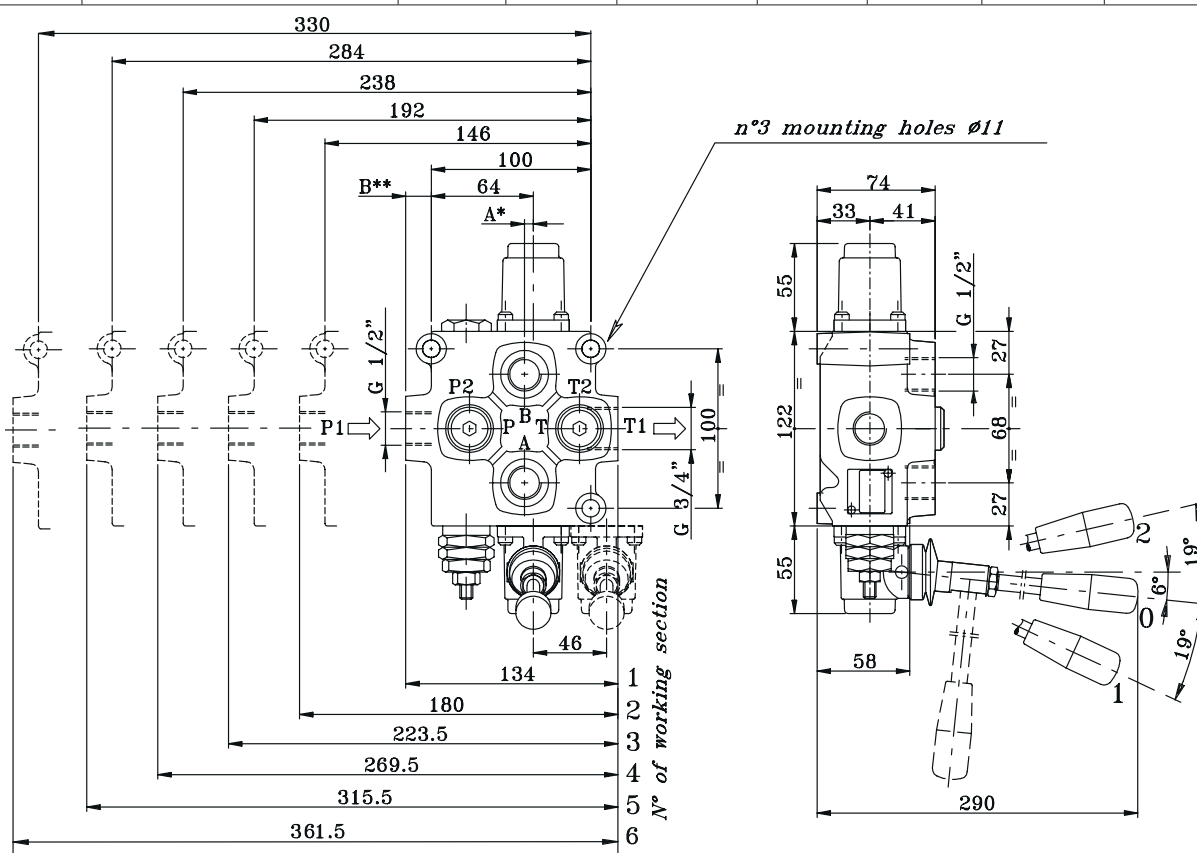


Monoblock Directional Control Valve Manually Operated Standard Double Acting - Spring Centred

(COMMON LOAD CHECK ON INLET)

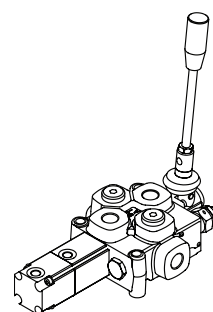
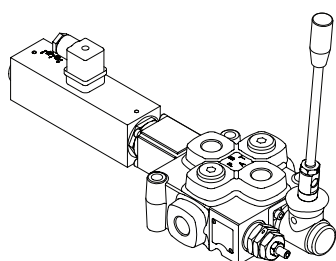
1

Stock No.	Model Code	No. of Spools	Recommended Maximum Flow		Recommended Max. Pressure		Port Size	List Price
Q751103A1M1	Q751EF1SN103A1M1F3D	1	75 LPM	20 US GPM	350 BAR	5075 PSI	7/8" UNO IN/WORK 1-1/16" UNO TANK	
Q752103A1M1	Q752EF1SN2X103A1M1F3D	2						
Q753103A1M1	Q753EF1SN3X103A1M1F3D	3			300 BAR	4350 PSI		
Q754103A1M1	Q754EF1SN4X103A1M1F3D	4						
Q755103A1M1	Q755EF1SN5X103A1M1F3D	5						
Q756103A1M1	Q756EF1SN6X103A1M1F3D	6			270 BAR	3900 PSI		



* : A = 5.5 for 1 working section, A = 0 for 2, 3, 4 and 5 working sections

** : B = 16 for 1, 2, 3 working sections, B = 13.5 for 4 and 5 working sections



Q75 Options and Accessories see Page 1.10



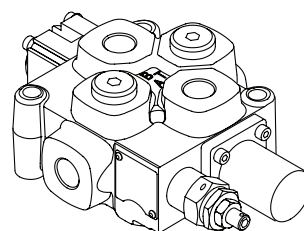
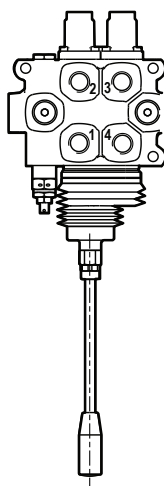
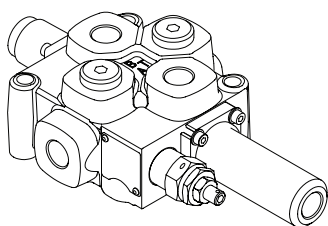


Q75 / Q95

1

Q75 / Q95 Options and Accessories

Stock No.	Model Code	Description	List Price
08743R3	R3	Detent Kit - 3 Position	
08741R1	R1	Detent Kit - 2 Position Handle Out	
08742R2	R2	Detent Kit - 2 Position Handle In	
08661P1N	P1N	Pneumatic Pilot Kit	
08661P1NP	P1NP	Pneumatic Pilot Kit - Proportional	
08779H1	H1	Hydraulic Proportional Kit	
08785H5	H5	Hydraulic Proportional Kit	
08792C2C3	C2/C3	Cam Control Kit	
08799RTL	RTL	Rotary Control	
08622A8	A8	Cable Connector Kit	
08637A15SR	A15	'Plus' Axis Joystick	
126A1R10Z1	126A1R10Z1	Float 4 Position Spool Kit	
A1D3	D3	Electro Pneumatic Actuator	
A1D41	D41	Electric Control 12 or 24 V	
05566F6D	F6D - BSP Q75	Power Beyond Sleeve - 1/2" BSPP - Q75	
05566F6DSAE	F6D - SAE Q75	Power Beyond Sleeve - 7/8" UNO - Q75	
09566F6D	F6D - BSP Q95	Power Beyond Sleeve - 3/4" BSPP - Q95	
05567F16D	F16D - BSP Q75	Closed Centre Plug - BSPP - Q75	
05567F16DSAE	F16D - SAE Q75	Closed Centre Plug - SAE - Q75	
09567F16D	F16D - BSP Q95	Closed Centre Plug - BSPP - Q95	
10743R1K	R1K	Pressure Kickout - Handle Out	





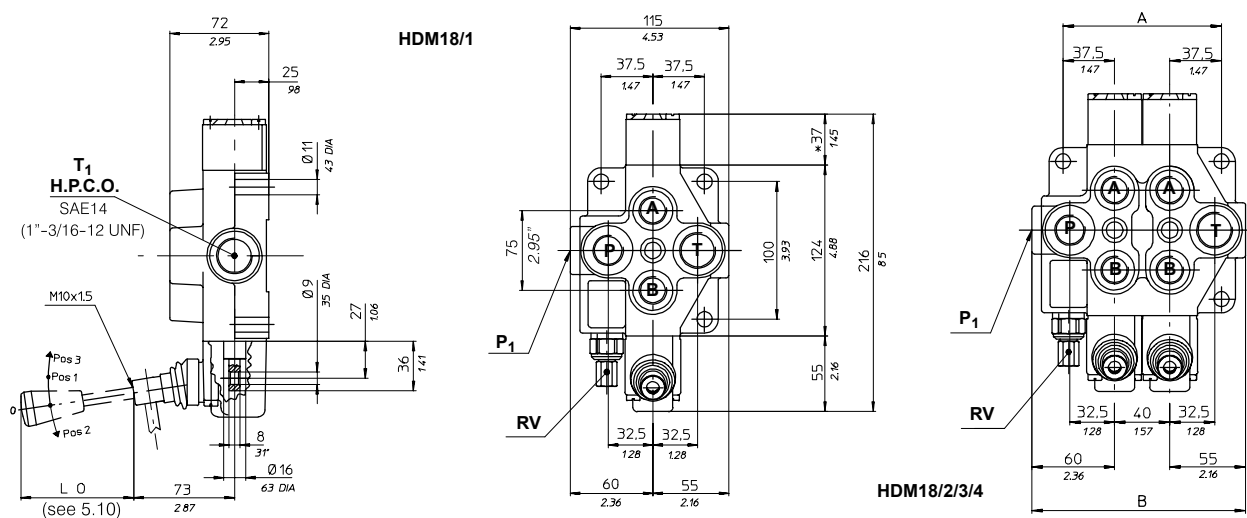
HDM18



Monoblock Directional Control Valve Manually Operated Standard Double Acting - Spring Centred

(INDIVIDUAL LOAD CHECK ON EACH SPOOL)

Stock No.	Model Code	No. of Spools	Recommended Maximum Flow		Recommended Max. Pressure		Port Size	List Price
071818001	HDM18/1K06-150/A133	1	70 LPM	18 US GPM	400 BAR	5700 PSI	7/8" UNO IN/WORK	
071828001	HDM18/2K06-150/AA133	2						
071838001	HDM18/3K06-150/AAA133	3					1-1/16" UNO TANK	
071848001	HDM18/4K06-150/AAAA133	4						



No. of Sections	HDM18/2	HDM18/3	HDM18/4
Dim. A	115	155	195
Dim. B	155	195	235

HDM18 Options and Accessories

Stock No.	Model Code	Description	List Price
768520140	Type 17	Detent Kit - 3 Position (17)	
768530040	Type 10	Detent Kit - 2 Position - Handle In (10)	
768530090	Type 20	Detent Kit - 2 Position - Handle Out (20)	
768640120	Type 136	4th Position Float Spool Kit (Not available as a spare part)	
651476011	Type Z	4th Position Float Spool (Not available as a spare part)	
651419010	Type G	Single Acting Spool (Not available as a spare part)	
651407010	Type C	Motor Spool (Not available as a spare part)	
SET	SET	Pre-set Relief Valve (Other than factory set 150 Bar)	
770000460	Code H.P.C.	Power beyond Sleeve - 7/8" UN O'Ring Port	
770000470	Code H.P.C.	Power beyond Sleeve - 1-1/16" UN O'Ring Port	
778000140	Code C.C.	Closed Centre Plug	
775930090	Type L133	'Plus' Axis Joystick Kit (per Joystick Assembly)	
770000530		M/F Adaptor 1-3/16" - 1-1/16" UN O'Ring	
778400140		No Relief Valve Kit	
760900010	Type L102	Cable Connector Kit	
768650110	Code 24	Hydraulic/Pneumatic Pilot Kit (per Spool)	
768650190	Code 50	Hydraulic Proportional Control	



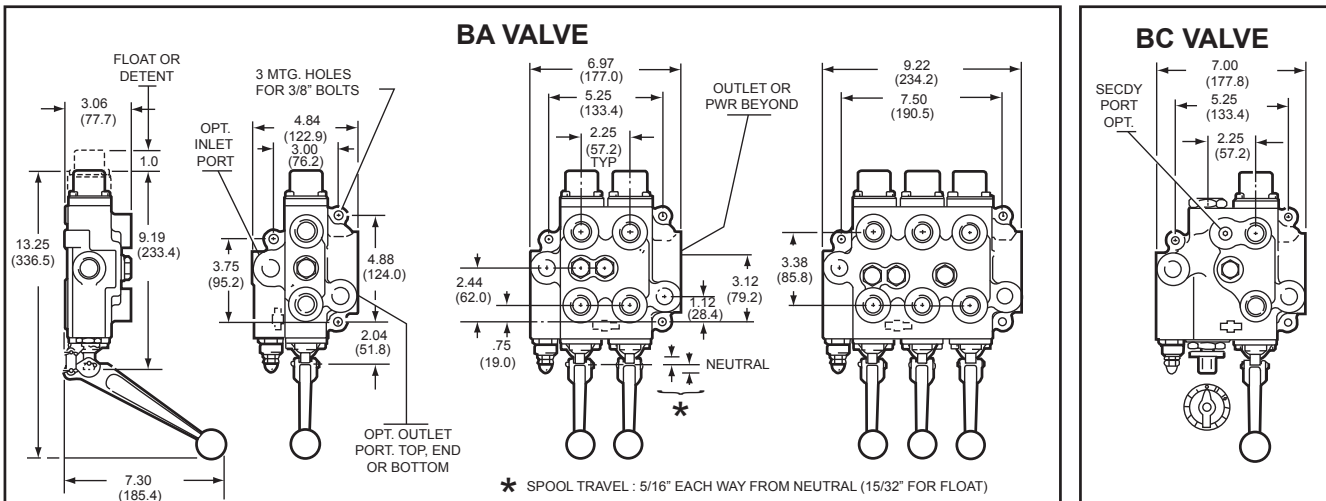
B Series



Monoblock Directional Control Valve Manually Operated Standard Double Acting - Spring Centred

(INDIVIDUAL LOAD CHECK ON EACH SPOOL)

Stock No.	Model Code	Special Features	No. of Spools	Recommended Maximum Flow		Recommended Max. Pressure		Port Size	List Price
131144	BA11AG3TDO	No HPCO Fitted	1	114 LPM	30 US GPM	206 BAR	3000 PSI	1-1/16" UN O'Ring	
131063	BA11AG2TDO	HPCO Fitted	1						
133276	BA13AG3TDO	Single Acting	1						
134885	BA1AXG3TDO	Float Spool	1						
120827	BC1AG3T1DO	Flow Control	1						
136306	BA211AAG3TDO		2						
143559	BA2A1XAG3TDO	1st Spool Float	2						
145761	BA3111AAAG3TDO		3						
150350	BA3A11XAAG3TDO	1st Spool Float	3						



Cross B Style Options and Accessories

Stock No.	Model Code	Description	List Price
1V0294	Code B	Detent Kit - 3 Position	
1V0557	Code M	Detent Kit - 2 Position with Spring Centring	
1V0558	Code N	Detent Kit - 2 Position - Handle In	
1V0559	Code P	Detent Kit - 2 Position - Handle Out	
1V0642	Code E	Pressure Release Detent Kit - Handle In	
1V0096	Type 3	Single Acting Spool (Not available as a spare part)	
1V0092	Type 5	Motor Spool (Not available as a spare part)	
SET	SET	Pre-set Relief Valve (Other than factory set 140 Bar)	
1V0249	Code 2	Power Beyond Sleeve - 1-1/16" Un O'Ring	
1V0208	Code 1	Power Beyond Sleeve - 3/4" NPT	
1V0206	Code 5	Closed Centre Plug	
1R0035		No Relief Valve Plug	
1V1626		All Steel Handle Kit	
191743		Cable Connector Kit	
CHAPNUB		Hydraulic/Pneumatic Pilot Kit (per Spool)	



C Series

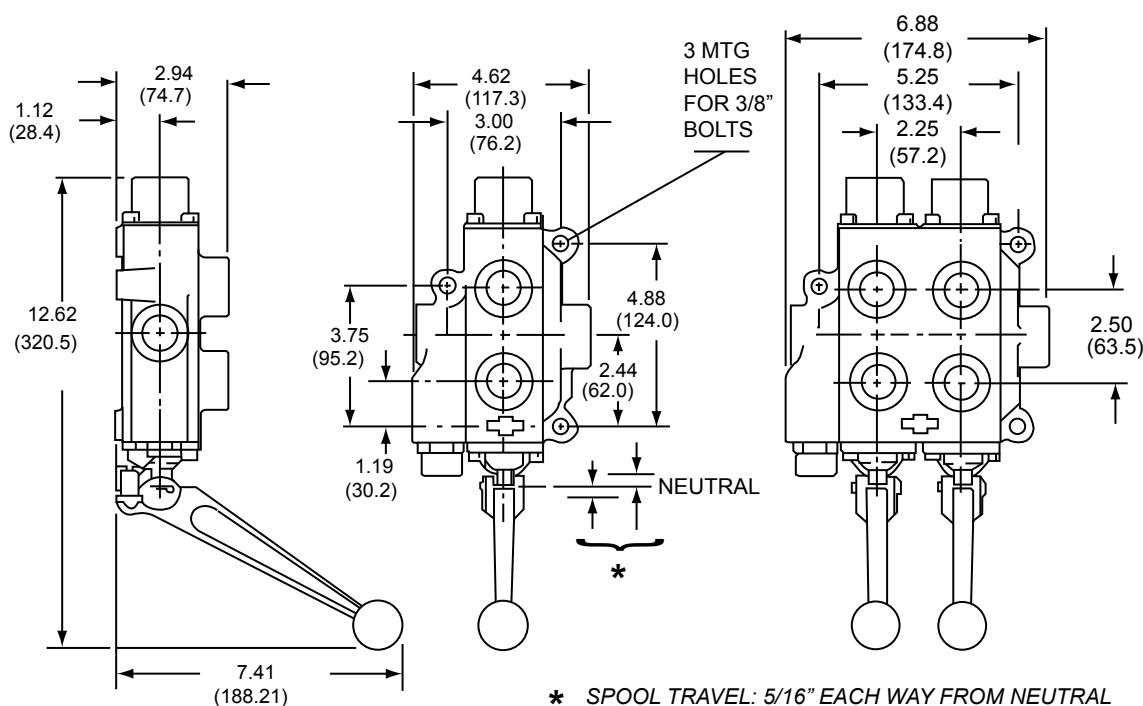


1

Monoblock Directional Control Valve Manually Operated Standard Double Acting - Spring Centred

(NO LOAD CHECK)

Stock No.	Model Code	Special Features	No. of Spools	Recommended Maximum Flow		Recommended Max. Pressure		Port Size	List Price
100156	CA11AGAO	No Power Beyond	1	95 LPM	25 US GPM	172 BAR	2500 PSI	1/2" NPT work 3/4" NPT in/out	
100184	CA11AGDO	No Power Beyond	1					3/4" UN work 7/8" UN in/out	
108425	CD11EGDO	Log-Splitter Valve	1					3/4" UN work 7/8" UN in/out	
104153	CA211AAGAO	No Power Beyond	2					1/2" NPT work 3/4" NPT in/out	
104153A	CD213FFGAO	Auto Cycle Valve	2					1/2" NPT work 3/4" NPT in/out	
103980	CV-CONVERTA	D/A - S/A Conversion	1					1/2" NPT work 3/4" NPT in/out	



* SPOOL TRAVEL: 5/16" EACH WAY FROM NEUTRAL

Cross C Style Options and Accessories

Stock No.	Model Code	Description	List Price
1V0294	Code B	Detent Kit - 3 Position	
1V0560	Code M	Detent Kit - 2 Position with Spring Centring	
1V0561	Code N	Detent Kit - 2 Position - Handle In	
1V0562	Code P	Detent Kit - 2 Position - Handle Out	
1V0640	Code E	Pressure Release Detent Kit - Handle In	
1V0006	Type 3	Single Acting Spool (Not available as a spare part)	
	Type 5	Motor Spool (Not available as a spare part)	
1V0007	Type 2	Closed Centre D/A Spool (Not available as a spare part)	
SET	SET	Pre-set Relief Valve (Other than factory set 150 Bar)	
1V1628		All Steel Handle Kit	
191743		Cable Connector Kit	
CHAPNUC		Hydraulic/Pneumatic Pilot Kit (per Spool)	



LS & RD5 Series



Monoblock Directional Control Valve Manually Operated Standard Double Acting - Spring Centred

(NO LOAD CHECK)

1

Stock No.	Model Code	Special Features	No. of Spools	Recommended Maximum Flow		Recommended Max. Pressure		Port Size	List Price
LS300001	Log Splitter	-	1	95 LPM	25 US GPM	172 BAR	2500 PSI	1/2" NPT work 3/4" NPT in/out	
LSR30603	Log Splitter	Regen	1						
RD523MMEE51A1A1		Auto Cycle	2						

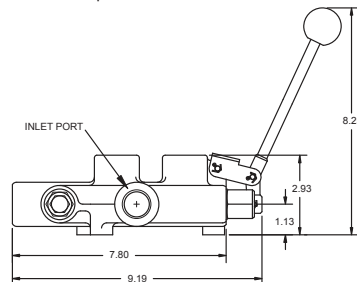
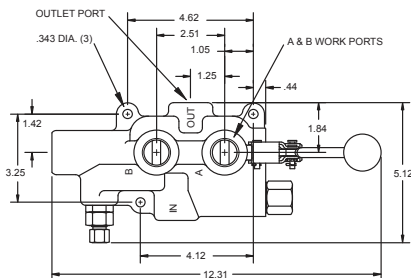
MODEL LS3000 DIMENSIONAL DATA

STANDARD FEATURES

- Hydraulically balanced, hard chrome plated spool
- Handle can be installed in 'up' or 'down' position
- Detent release pressure adjustable from 1000 to 2000 PSI
- For use with system flows up to 25 GPM
- Relief valve adjustable up to 2750 PSI
- Tandem centre spool (in neutral position, both work ports blocked, pump unloaded to tank)
- Ideal for log-splitter applications. Available with 3/4" NPTF work ports for higher flow applications

SPECIFICATIONS

- Max design and test pressure 2750 PSI
- Max tank port pressure 150 PSI
- Flow rating 25 GPM max.
- Relief valve setting 2250 PSI
- This valve has one position pressure release detent with spring centre to neutral.
- Weight 10 lbs
- Recommended filtration ISO 4406 19/17/14
- Max operation temperature 180°F
- In exposed environments do not mount with spool vertical and handle end down.



On LS-3000 Models, pressure release detent is in the spool out position. On LS-3060 Models, pressure release detent is in the spool in position.

MODEL LSR-3060 RAPID EXTEND LOG SPLITTER VALVE

STANDARD FEATURES

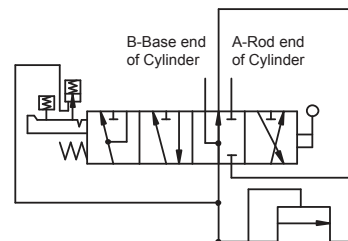
- Hydraulically balanced, hard chrome plated spool
- Handle can be installed in 'up' or 'down' position
- Extend flows of up to 25 GPM with inlet flows of 4 GPM
- Relief valve adjustable up to 3500 PSI
- Tandem centre spool
- Manual shift from high speed mode to high force mode
- Spring centre position 4 position spool with soft stop
- Pressure release detent on retract

SPECIFICATIONS

- Max design and test pressure 3500 PSI
- Max tank port pressure 150 PSI
- Nominal inlet flow rating 4 GPM
- Relief valve setting 2250 PSI
- This valve has a pressure release detent from spool in w/ spring centre to neutral
- The valve has a 4 position spool with normal extend and retract positions and a 4th rapid extend position
- Max operation temperature 180°F
- In exposed environments, do not mount with spool in the vertical position.
- Dimensionally similar to the LS3000 valve

FUNCTION:

The Prince LSR-3060-3 log splitter valve features an extremely fast 'Rapid Extend' high speed mode. The LSR has been specifically designed to reduce system costs by allowing a single stage pump to be used in systems currently using two stage (hi-low) pumps. When extra splitting force is required, the LSR allows the user to manually shift from high speed mode to high force mode. A 'soft stop' differentiates between high force and high speed modes. Laboratory testing has not shown a significant difference in working cycle times between single stage/rapid extend systems and two stage systems. (Working cycle is the average time between extending the cylinder to split the first log and extending to split the next log after the split wood has been removed and a new log has been placed on the log splitter.)

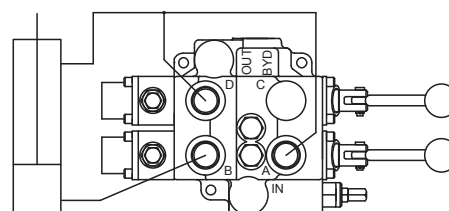


MODEL RD-5000 2 SPOOL SPECIAL APPLICATION VALVE

"AUTO-CYCLE" TWO SPOOL VALVE

This valve is a modified RD-5200 two spool valve that can be used to automatically cycle a hydraulic cylinder. The spools and the valve body have been modified to provide this function. Both spools have the pressure release detent spool attachment. The valve shown is connected to a cylinder in the sketch. The 'B' port is connected to the base of the cylinder. The 'A' and 'D' ports are tied together and connected to the rod end of the cylinder. The 'C' port is plugged. At the beginning of the cycle the cylinder is fully retracted. To begin the cycle both handles are pulled back. Oil is directed to the 'B' port and the cylinder will extend until it reaches the end of its stroke. At this point the pressure will build to the detent release pressure and the first spool will centre to neutral. Now the oil will go through the open centre core to the second spool and is directed out the 'D' port to retract the cylinder. When the cylinder reaches the full retract position the pressure will build to the detent release pressure and the second spool will centre to neutral. This completes the cycle. To begin the next cycle both handles are again manually pulled back. Please note this valve does not have the loadcheck feature of the standard RD5200 valve. Also the 'B' port is open to tank in neutral.

Model Number RD523MMEE5A1A1





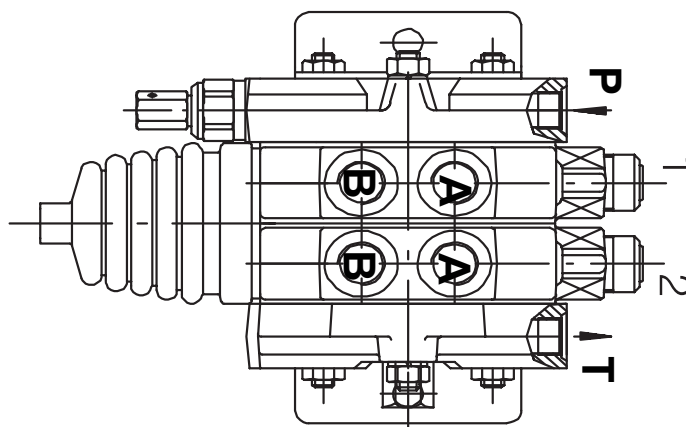
HDS11



1

Sectional Directional Control Valve Manually Operated Standard Double Acting - Spring Centred Assemblies

Stock No.	Model Code	No. of Spools	Recommended Maximum Flow		Recommended Max. Pressure		Port Size	List Price
HDS11/1	HDS11/1	1	45 LPM	12 US GPM	320 BAR	4600 PSI	3/4" UNO	
HDS11/2	HDS11/2	2						
HDS11/3	HDS11/3	3						
HDS11/4	HDS11/4	4						
HDS11/5	HDS11/5	5						
HDS11/6	HDS11/6	6						
HDS11/7	HDS11/7	7						
HDS11/8	HDS11/8	8						
HDS11/9	HDS11/9	9						
HDS11/10	HDS11/10	10						



HDS11 Options and Accessories

Stock No.	Model Code	Description	List Price
768520010	Type 3	Detent Kit - 3 Position	
768520050	Type 5	Detent Kit - 2 Position - Handle Out	
768530010	Type 2	Detent Kit - 2 Position - Spring Centred	
768540030	Type 04	4th Position Float Spool Kit (Not available as a spare part)	
	Type G	Single Acting Spool (Not available as a spare part)	
	Type C	Motor Spool (Not available as a spare part)	
SET	SET	Pre-set Relief Valve (Other than factory set 150 Bar)	
770000060		Power Beyond Sleeve (Carry-over)	
778300010		Closed Centre Plug	
775920060	Type L133	'Plus' Axis Joystick Kit (per Joystick Assembly)	
778400140		No Relief Valve Kit	
760900030	Type L102	Cable Connector Kit	
787400930	Type OA	Service Port, Relief Valve Cartridge	
787600930	Type C	Service Port, Anti-Cavitation Valve Cartridge	
787401270	Type UC	Service Port, Relief/Anti-Cavitation Valve Cartridge	
756200120	Type K90	Intermediate Press. Comp. Flow Regulator & Relief Valve	
677200420		Foot Bracket	



HDS11



Sectional Directional Control Valve Manually Operated Individual Inlets, Outlets and Sections

1

HDS11 Inlet Sections

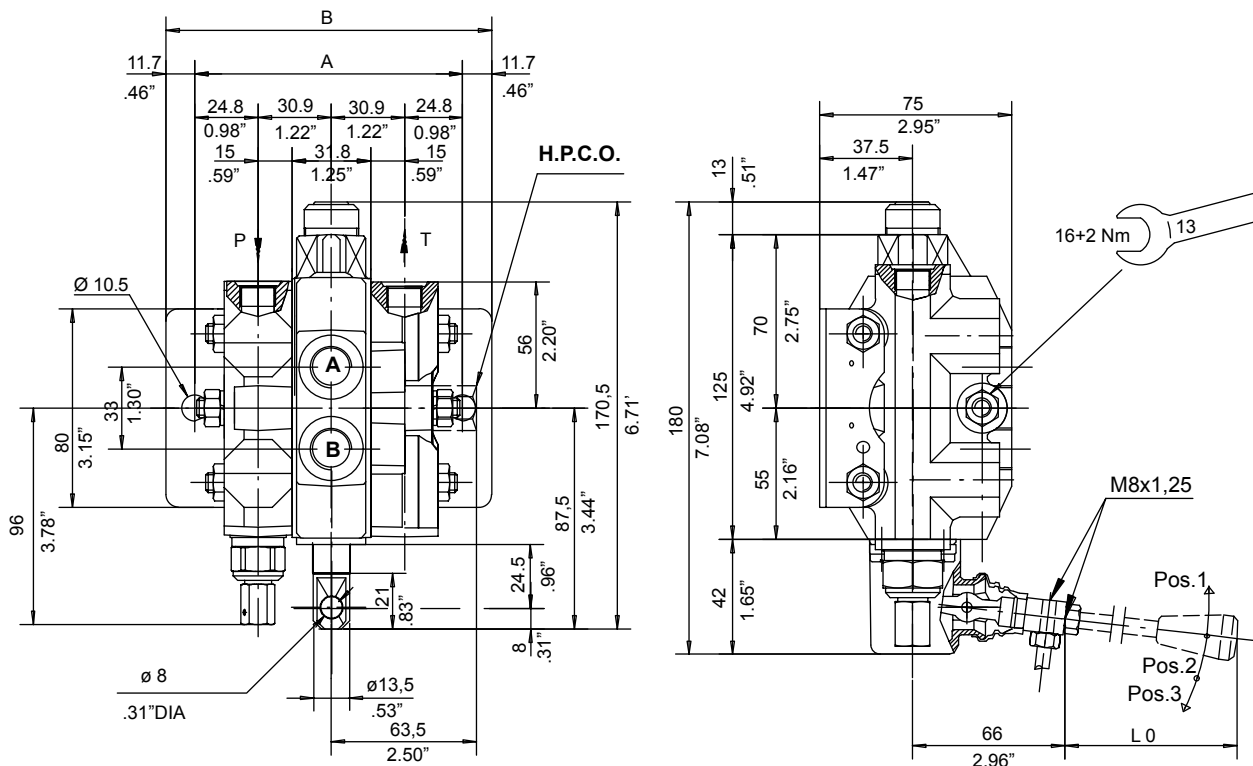
Stock No.	Model Code	Description	List Price
731070030	Code T07	'P' Port c/w Inlet Relief Valve	
731070020	Code T12	'P1 & T1' Ports c/w Inlet Relief Valve	

HDS11 Outlet Sections

Stock No.	Model Code	Description	List Price
630070010	Code P02	Open Centre c/w 'T' Port	
730070020	Code P07	Open Centre c/w 'T' Port and HPC	

HDS11 Body Sections

Stock No.	Model Code	Description	List Price
741270018	Code K02A01	Parallel - Double Acting	
741270035	Code K07A01	Parallel - Double Acting c/w Service Port Relief Cavities	
741270028	Code K12Z04	Parallel - Double Acting c/w 4th Position Float	
741270017	Code K202E01E	Parallel - Double Acting Electric	
741270023	Code K48A01	Tandem - Double Acting	
741270036	Code K53A01	Tandem - Double Acting c/w Service Port Relief Cavities	
741270024	Code K48X01	Tandem/Series - Double Acting	
741270050	Code K226ZE08E	Parallel - Double Acting c/w Float Electric	
741270107	Code K212AE01E	Parallel - Double Acting Electric c/w Cavities	
741270108	Code K253XE01E	Tandem/Series - Double Acting Electric	

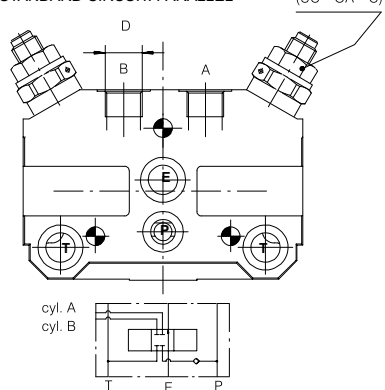


Sectional Directional Control Valve Manually Operated Standard Double Acting - Spring Centred Assemblies

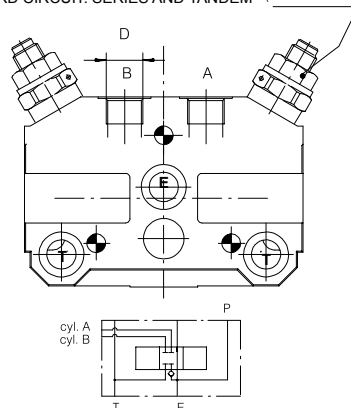
Stock No.	Model Code	No. of Spools	Recommended Maximum Flow		Recommended Max. Pressure		Port Size	List Price
HDS15/1	HDS15/1	1	60 LPM	15 US GPM	320 BAR	4600 PSI	7/8" UNO	
HDS15/2	HDS15/2	2						
HDS15/3	HDS15/3	3						
HDS15/4	HDS15/4	4						
HDS15/5	HDS15/5	5						
HDS15/6	HDS15/6	6						
HDS15/7	HDS15/7	7						
HDS15/8	HDS15/8	8						
HDS15/9	HDS15/9	9						
HDS15/10	HDS15/10	10						

STANDARD CIRCUIT: PARALLEL

(UC - OA - C)



STANDARD CIRCUIT: SERIES AND TANDEM (UC - OA - C)



HDS15 Options and Accessories

Stock No.	Model Code	Description	List Price
768520140	Type 17	Detent Kit - 3 Position	
768530040	Type 10	Detent Kit - 2 Position - Handle In (10)	
768530090	Type 20	Detent Kit - 2 Position - Handle Out (20)	
768640120	Type 136	4th Position Float Spool Kit (Not available as a spare part)	
651409010	Type G	Single Acting Spool (Not available as a spare part)	
651407010	Type C	Motor Spool (Not available as a spare part)	
SET	SET	Pre-set Relief Valve (Other than factory set 150 Bar)	
775930090	Type L133	'Plus' Axis Joystick Kit (per Joystick Assembly)	
778400140		No Relief Valve Kit	
760900010	Type L102	Cable Connector Kit	
768650110	Code 24	Hydraulic/Pneumatic Pilot Kit (per spool)	
768650190	Code 50	Hydraulic Proportional Control	
787400950	Type OA	Service Port, Relief Valve Cartridge (0-130 Bar)	
787400960	Type OA	Service Port, Relief Valve Cartridge (130-350 Bar)	
787601430	Type C	Service Port, Anti-Cavitation Valve Cartridge	
787401310	Type UC	Service Port, Relief/Anti-Cavitation Valve Cartridge (0-130 Bar)	
787401321	Type UC	Service Port, Relief/Anti-Cavitation Valve Cartridge (130-350 Bar)	
778400050		Blanking Plug - UC & OA Cavities	
677200570		Foot Bracket	



HDS15



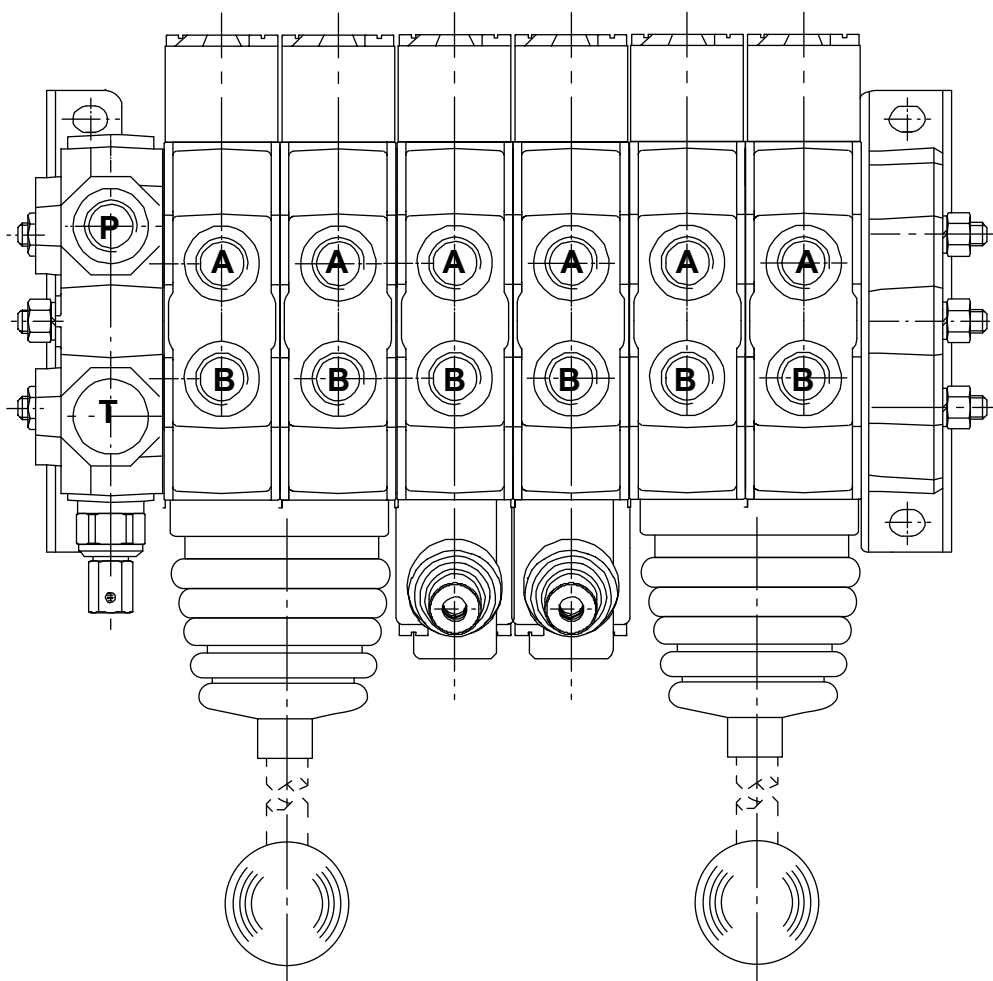
1

Sectional Directional Control Valve Manually Operated Double Acting Load Sensing - Spring Centred Assemblies

Stock No.	Model Code	No. of Spools	Recommended Maximum Flow		Recommended Max. Pressure		Port Size	List Price
011518002	HDS15/1K05-151LS	1	60 LPM	15 US GPM	320 BAR	4600 PSI	7/8" UNO	
011528002	HDS15/2K05-151LS	2						
011538001	HDS15/3K05-151LS	3						
011548002	HDS15/4K05-151LS	4						
Add Per Spool		5 - 10						

Sectional Directional Control Valve Manually Operated Backhoe Valve Assembly

Stock No.	Model Code	No. of Spools	Recommended Maximum Flow		Recommended Max. Pressure		Port Size	List Price
011568001	HDS15/6K05-141XXX	6	60 LPM	15 US GPM	320 BAR	4600 PSI	7/8" UNO	





HDS20

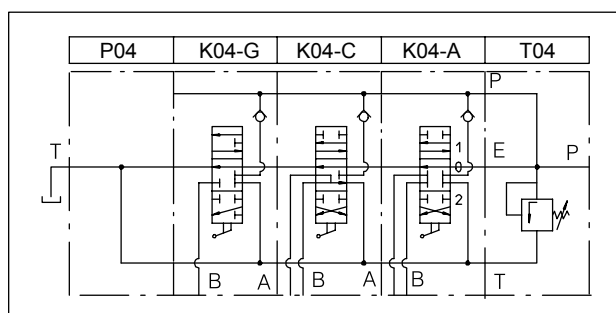


Sectional Directional Control Valve Manually Operated Standard Double Acting - Spring Centred Assemblies

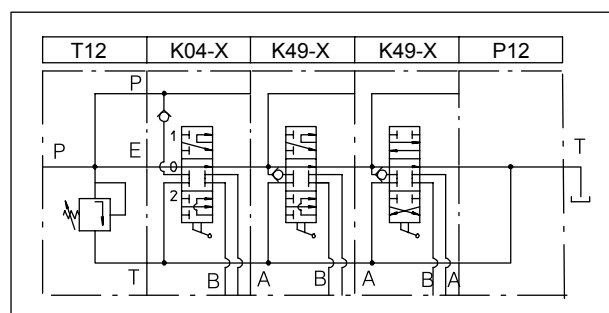
1

Stock No.	Model Code	No. of Spools	Recommended Maximum Flow		Recommended Max. Pressure		Port Size	List Price
HDS20/1	HDS20/1	1	80 LPM	21 US GPM	320 BAR	4600 PSI	1-1/16" UNO IN/OUT	
HDS20/2	HDS20/2	2						
HDS20/3	HDS20/3	3						
HDS20/4	HDS20/4	4						
HDS20/5	HDS20/5	5						
HDS20/6	HDS20/6	6						
HDS20/7	HDS20/7	7					7/8" UNO WORK	
HDS20/8	HDS20/8	8						
HDS20/9	HDS20/9	9						
HDS20/10	HDS20/10	10						

Standard parallel circuit



Optional series circuit



HDS20 Options and Accessories

Stock No.	Model Code	Description	List Price
768520020	Type 03	Detent Kit - 3 Position (03)	
768530020	Type 02	Detent Kit - 2 Position - Handle In (20)	
768530080	Type 19	Detent Kit - 2 Position - Handle Out (19)	
651676010	Type Z	4th Position Float Spool Kit (Not available as a spare part)	
651609010	Type G	Single Acting Spool (Not available as a spare part)	
651607010	Type C	Motor Spool (Not available as a spare part)	
SET	SET	Pre-set Relief Valve (Other than factory set 150 Bar)	
775930070	Type L133	'Plus' Axis Joystick Kit (per Joystick Assembly)	
778400160		No Relief Valve Kit	
760900020	Type L102	Cable Connector Kit	
768650130	Code 24	Hydraulic/Pneumatic Pilot Kit (per spool)	
768650200	HP50	Hydraulic Proportional Control	
787401080	Type OA	Service Port, Relief Valve Cartridge (0-95 Bar)	
787401130	Type OA	Service Port, Relief Valve Cartridge (95-210 Bar)	
787401100	Type OA	Service Port, Relief Valve Cartridge (210-350 Bar)	
787601140	Type C	Service Port, Anti-Cavitation Valve Cartridge	
787401360	Type UC	Service Port, Relief/Anti-Cavitation Valve Cartridge (0-95 Bar)	
787401380	Type UC	Service Port, Relief/Anti-Cavitation Valve Cartridge (95-210 Bar)	
787401370	Type UC	Service Port, Relief/Anti-Cavitation Valve Cartridge (210-350 Bar)	
778400070		Blanking Plug - UC & OA Cavities	



HDS20



Sectional Directional Control Valve Manually Operated Individual Inlets, Outlets and Sections

1

HDS20 Inlet Sections

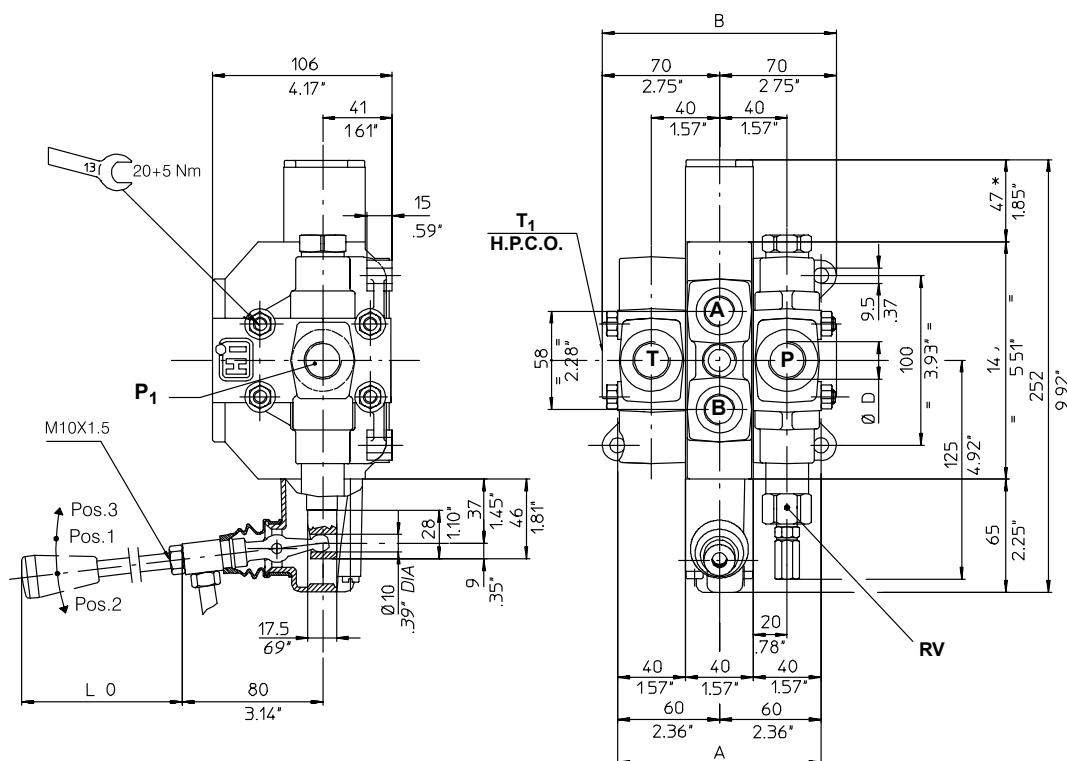
Stock No.	Model Code	Description	List Price
731490020	Code T04	R.H. Inlet ('P' Port c/w Inlet Relief Valve) - Parallel Circuit	
731490040	Code T12	L.H. ('P' Port c/w Inlet Relief Valve) - Series Circuit	

HDS20 Outlet Sections

Stock No.	Model Code	Description	List Price
730490020	Code P04	L.H. Outlet ('T' Port - Open Centre) - Parallel Circuit	
730490040	Code P08	L.H. Outlet ('T' Port c/w HPC) - Parallel Circuit	
630490060	Code P12	R.H. Outlet ('T' Port - Open Centre) - Series Circuit	
730490080	Code P16	R.H. Outlet ('T' Port c/w HPC) - Series Circuit	

HDS20 Body Sections

Stock No.	Model Code	Description	List Price
741480001	Code K04A01	Parallel - Double Acting	
741480006	Code K04X01	Parallel - Double Acting (Series)	
741480008	Code K04Z128	Parallel - Double Acting c/w 4th Position Float	
741480075	Code K08A01	Parallel - Double Acting c/w Service Port Cavities	
741480018	Code K49A01	Tandem - Double Acting	
741480020	Code K49X01	Tandem/Series - Double Acting	
741480076	Code K53A01	Tandem - Double Acting c/w Service Port Relief	



No. of Sections	1	2	3	4	5	6	7	8	9	10
Dim. A	120	160	200	240	280	320	360	400	440	480
Dim. B	140	180	220	260	300	340	380	420	460	500



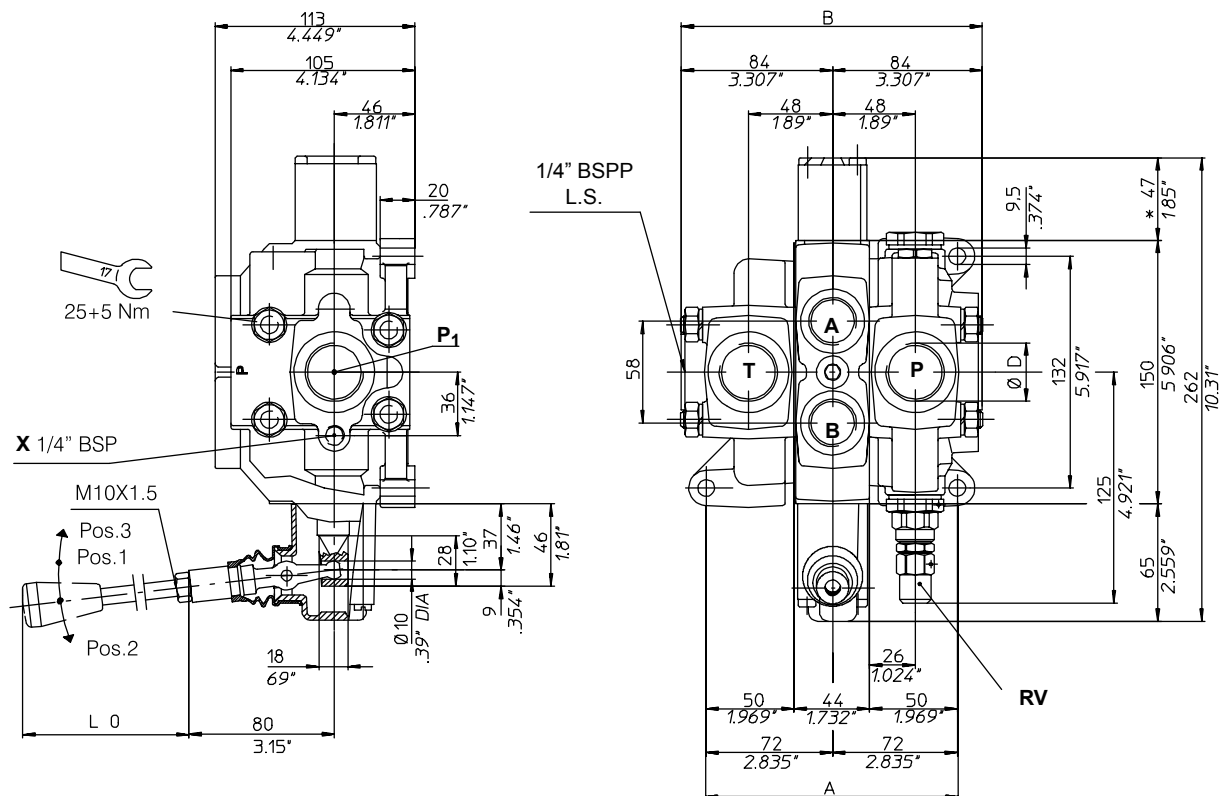
HDS30



Sectional Directional Control Valve Manually Operated Double Acting Load Sensing - Spring Centred Assemblies

1

Stock No.	Model Code	No. of Spools	Recommended Maximum Flow		Recommended Max. Pressure		Port Size	List Price
033014001	HDS30/1K02151LS	1	120 LPM	31 US GPM	250 BAR	3600 PSI	P & T 1" BSPP	
033014002	HDS30/2K02151LS	2						
033034066	HDS30/3K02151LS	3						
033044049	HDS30/4K02151LS	4					A & B 3/4" BSPP	
Add Per Spool (741640104)		5 - 10						



No. of Sections	1	2	3	4	5	6	7	8	9	10
Dim. A	144	188	232	276	320	364	408	452	496	540
Dim. B	168	212	256	300	344	388	432	476	520	564



HDS30



Sectional Directional Control Valve Manually Operated Individual Inlets, Outlets and Sections

Recommended Maximum Flow		Recommended Maximum Pressure		Inlet/Outlet Port Size	Work Port Size
120 LPM	31 US GPM	320 BAR	4600 PSI	1-5/16" UNO	1-1/16" UNO

HDS30 Inlet Section

Stock No.	Model Code	Description	List Price
731690020	Code T12	L.H. Inlet ('P' Port c/w Inlet Relief Valve)	

HDS30 Outlet Section

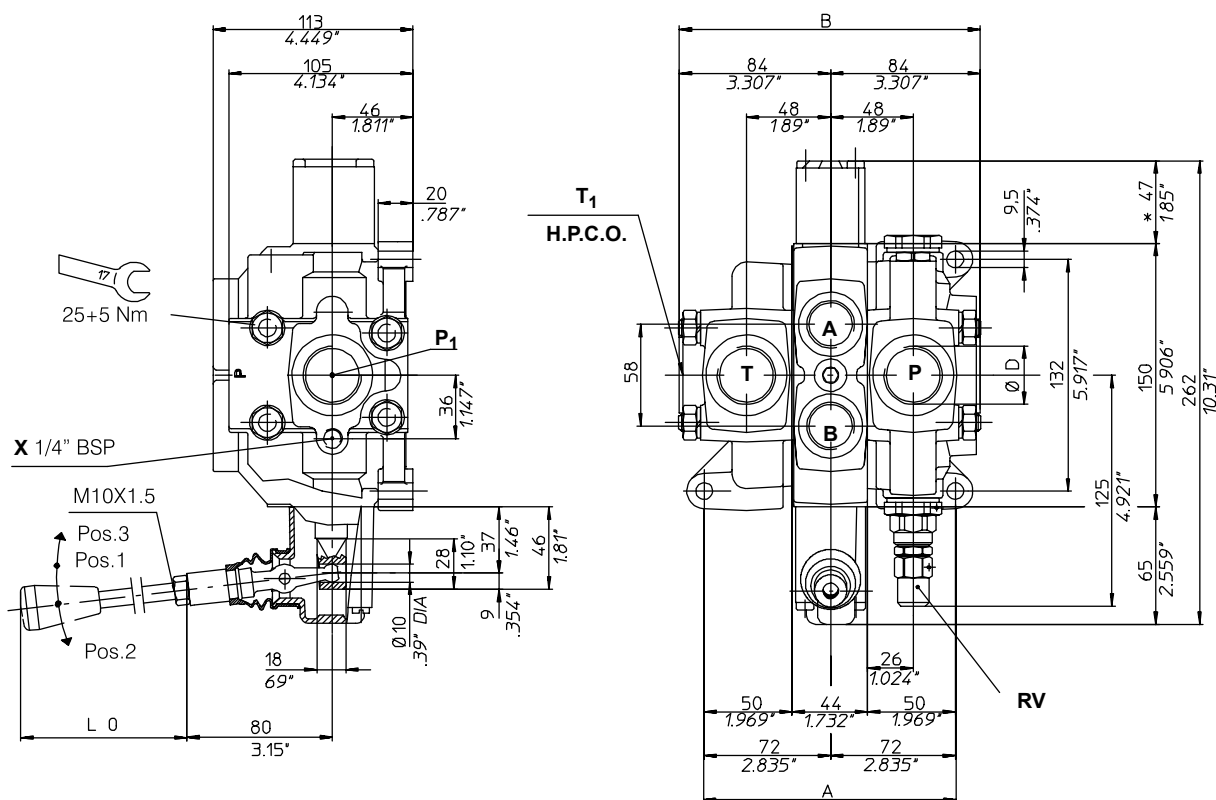
Stock No.	Model Code	Description	List Price
730690040	Code P16	R.H. Outlet ('T' Port c/w HPC)	

HDS30 Body Section

Stock No.	Model Code	Description	List Price
741690021	Code K08A01	Parallel - Double Acting c/w Service Port Cavities	

HDS30 Options and Accessories

Stock No.	Model Code	Description	List Price
768650200	HP50	Hydraulic Proportional Control	
768650130	Code 24	Hydraulic/Pneumatic Pilot Kit (per spool)	



No. of Sections	1	2	3	4	5	6	7	8	9	10
Dim. A	144	188	232	276	320	364	408	452	496	540
Dim. B	168	212	256	300	344	388	432	476	520	564



HC-D4

Sectional Directional Control Valve Manually Operated Individual Inlets, Outlets and Sections

1

Recommended Maximum Flow	Recommended Maximum Pressure	Inlet/Outlet Port Size	Work Port Size
80 LPM	350 BAR	G04 - 1/2" BSPP	G04 - 1/2" BSPP
		U04 - 7/8" UN	U04 - 7/8" UN

HC-D4 Inlet Sections

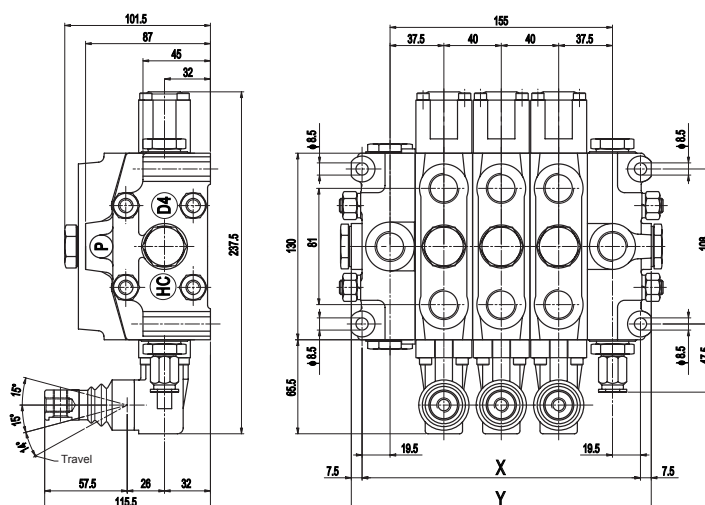
Stock No.	Model Code	Description	List Price
100307	IL009AG04	L.H. Inlet (c/w Inlet Relief Valve) 1/2" BSPP	
60090079ES	IL013AU04	L.H. Inlet (c/w Inlet Relief Valve) 7/8" UN	
100050	IL013AU04	L.H. Inlet (c/w Relief & Unloading) 24V DC	
7833	KZ1	Load Sense Intermediate Plate	

HC-D4 Outlet Sections

Stock No.	Model Code	Description	List Price
2320	TJAG04	R.H. Outlet ('T' Port c/w HPC) 1/2" BSPP	
100051	TNSAU04	R.H. Outlet ('T' Port c/w HPC) 7/8" UN	
18123	TJHDG04	R.H. Outlet Load Sense 1/2" BSPP	
38856	BFAU04	Mid Outlet 7/8" UN	

HC-D4 Body Sections

Stock No.	Model Code	Description	List Price
2163	W001AH001F001A05PAPB	Parallel - Double Acting c/w Cavities G04	
17587	W001AH002F001A	Parallel - Double Acting U04	
31913	W001AH002F001A05PAPB	Parallel - Double Acting c/w Cavities U04	
59089	W001AH001F00A01PA01PB	Parallel - Double Acting c/w Port Reliefs G04	
53861	W001AH001LS05PAPB	Parallel - Double Acting Load Sense c/w Cavities G04	
5006	W001AH00505PAPB	Parallel - Double Acting Hydraulic Pilot c/w Cavities G04	
57379	W001AH002F022A05PAPB	Parallel - Double Acting c/w Pneumatic & Cavities U04	
100137	W002AH002F022A	Parallel - Motor c/w Pneumatic U04	
100196	W002AH002F022A05PAPB	Parallel - Motor c/w Pneumatic & Cavities U04	



No. of Sections		1	2	3	4	5	6	7	8	9	10	11	12
Variable Dimensions (mm)	X	114	154	194	234	274	314	354	394	434	474	514	554
	Y	129	169	209	249	289	329	369	409	449	489	529	569
	Z	140	180	220	260	300	340	380	420	460	500	540	580
Weight (kg)		8	10.8	13.7	16.5	19.4	22.3	25.2	28	30.8	33.7	36.6	39.5

HC-D4 Options and
Accessories see Page 1.25



HC-D6

Sectional Directional Control Valve Manually Operated Individual Inlets, Outlets and Sections

Recommended Maximum Flow	Recommended Maximum Pressure	Inlet/Outlet Port Size	Work Port Size
100 LPM	350 BAR	3/4" BSPP	3/4" BSPP

HC-D6 Inlet Sections

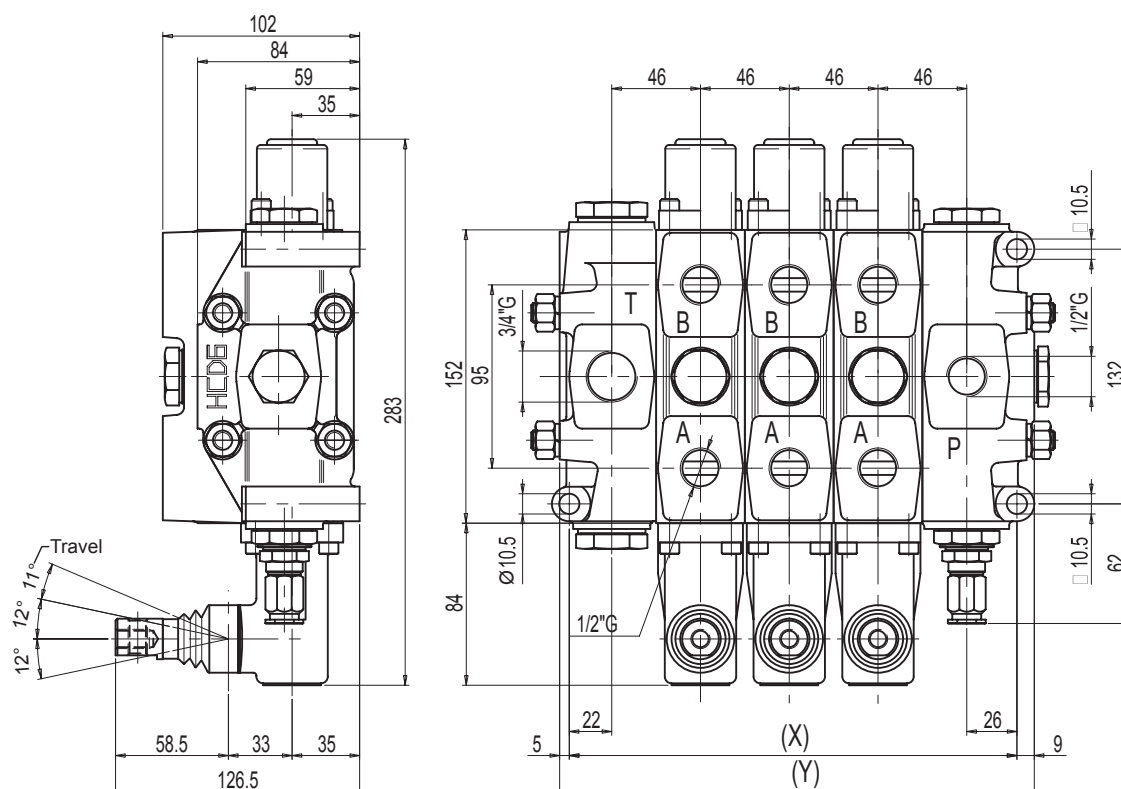
Stock No.	Model Code	Description	List Price
18292	IL009AG05	L.H. Inlet (c/w Inlet Relief Valve)	

HC-D6 Outlet Sections

Stock No.	Model Code	Description	List Price
14706	TNQG05	R.H. Outlet ('T' Port c/w HPC)	

HC-D6 Body Sections

Stock No.	Model Code	Description	List Price
16253	W001AH001	Parallel - Double Acting c/w Service Cavities 1/2" BSPP	
12465	W001AH001	Parallel - Double Acting c/w Service Cavities 3/4" BSPP	



No. of Sections		1	2	3	4	5	6	7	8	9	10	11	12
Variable Dimensions (mm)	X	140	186	232	278	324	370	416	462	508	554	600	646
	Y	156	202	248	294	340	386	432	478	524	570	616	662
	Z	180	226	272	318	364	410	456	502	548	594	640	686
Weight (kg)			11.6	16.1	20.5	25	29.4	33.9	38.3	42.8	47.2	51.7	56.1

HC-D6 Options and Accessories see Page 1.25



HC-D4 / D6

1

HC-D4 Options and Accessories

Stock No.	Model Code	Description	List Price
4703	2A	Relief Cartridge Pilot	
5398	2A	Relief Cartridge Direct	
430104001	3A	No Relief Blanking Plug	
915040403	8A	Solenoid Dump Valve 24V DCq	
320304001	H001	Lever Box Kit	
321904003	H128	Cable Connector Kit	
320504006	H005	Hydraulic Pilot Kit *	
320804001	F002A	Detent Kit - 3 Position	
320804002	F003A	Detent Kit - Handle Out	
320804003	F004A	Detent Kit - Handle In	
321104004	F020A	Pneumatic Kit	
321204003	F022A	Pneumatic Kit - Proportional	
321604001	F0620	Electro Pneumatic Kit - 12V DC	
321604002	F0630	Electro Pneumatic Kit - 24V DC	
320004061	H036	Electric Push Solenoid - 12V DC	
320004063	H037	Electric Push Solenoid - 24V DC	
915065905	01P	Service Port Relief 20-70 Bar	
915065901	01P	Service Port Relief 71-121 Bar	
915060423	01P	Service Port Relief 151-250 Bar	
915080401	02P	Anti Cav	
430404001	05P	Cavity Plug	

HC-D6 Options and Accessories

Stock No.	Model Code	Description	List Price
2742	2A	Relief Cartridge - Pilot 150 Bar	\$ 182.00
915040701	6A	Relief Cartridge - External Pilot	\$ 179.00
430107001	3A	No Relief Blanking Plug	\$ 36.00
320305008	H001	Lever Box Kit	\$ 117.00
320305001	H101	Handle Kit - Open	\$ 123.00
320505001	H005	Hydraulic Pilot Kit *	\$ 136.00
320805001	F002C	Detent Kit - 3 Position	\$ 117.00
321105004	F020A	Pneumatic Kit	\$ 246.00
321205005	F022A	Pneumatic Kit - Proportional	\$ 266.00
91506052#	01P	Service Port Relief Cartridge	\$ 116.00
91507050#	03P	S/P Relief/Anti Cav	\$ 147.00
430405001#	05P	Cavity Plug	\$ 15.00

Denotes Range

* Requires Special Spool



HC-D16

hydro
control

Sectional Directional Control Valve Manually Operated Individual Inlets, Outlets and Sections

Recommended Maximum Flow		Recommended Maximum Pressure		Inlet/Outlet Port Size	Work Port Size
150 LPM	40 US GPM	350 BAR	5000 PSI	3/4" & 1" BSPP	3/4" BSPP

HC-D16 Inlet Sections

Stock No.	Model Code	Description	List Price
22758	IL009AG05	L.H. Inlet (c/w Inlet Relief Valve)	
13652	IR009AG05	R.H. Inlet (c/w Inlet Relief Valve)	
35111	BE009AG05	Mid Inlet (c/w Relief Valve)	

HC-D16 Outlet Sections

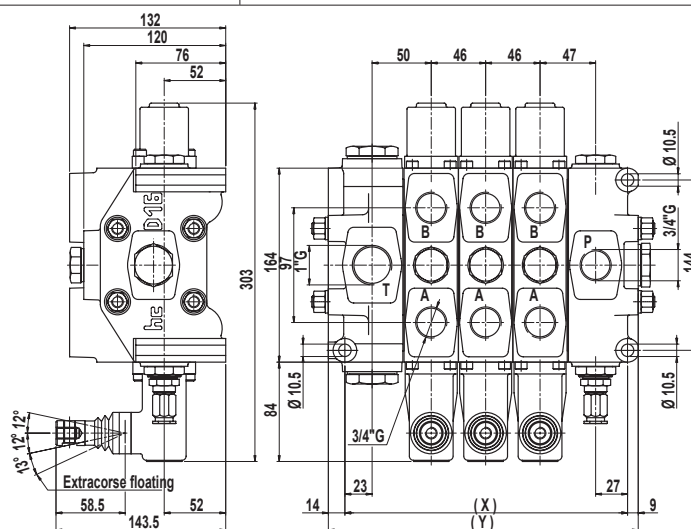
Stock No.	Model Code	Description	List Price
17704	TNQG06	R.H. Outlet ('T' Port c/w HPC)	
20437	B FAG06	Mid Outlet	

HC-D16 Body Sections

Stock No.	Model Code	Description	List Price
16682	W001AH001	Parallel - Double Acting c/w Service Cavities	
46105	W012AH001	Parallel - Float c/w Service Cavities	

HC-D16 Options and Accessories

Stock No.	Model Code	Description	List Price
320806001	F002A	Detent Kit - 3 Position	
SET	SET	Pre-set Relief Valve	
320545001	H006	Hydraulic Pilot Kit (per spool)	
321106002	F020A	Pneumatic Pilot Kit (per spool)	
915060601	01P	Service Port, Relief Valve Cartridge	
915070602	04P	Service Port, Relief/Anti-Cavitation Valve Cartridge	



No. of Sections		1	2	3	4	5	6	7	8	9	10	11	12
Variable Dimensions (mm)	X	147	193	239	285	331	377	423	469	515	561	607	653
	Y	170	216	262	308	354	400	446	492	538	584	630	676
	Z	200	246	292	338	384	430	476	522	568	614	660	706
Weight (kg)		19.1	24.1	29.2	34.3	39.5	44.5	49.3	54.7	59.8	64.0	70.0	75.1



HC-D20

Sectional Directional Control Valve Manually Operated Individual Inlets, Outlets and Sections

1

Recommended Maximum Flow		Recommended Maximum Pressure		Inlet/Outlet Port Size	Work Port Size
250 LPM	66 US GPM	350 BAR	5000 PSI	1" & 1-1/4" BSPP	1" BSPP

HC-D20 Inlet Sections

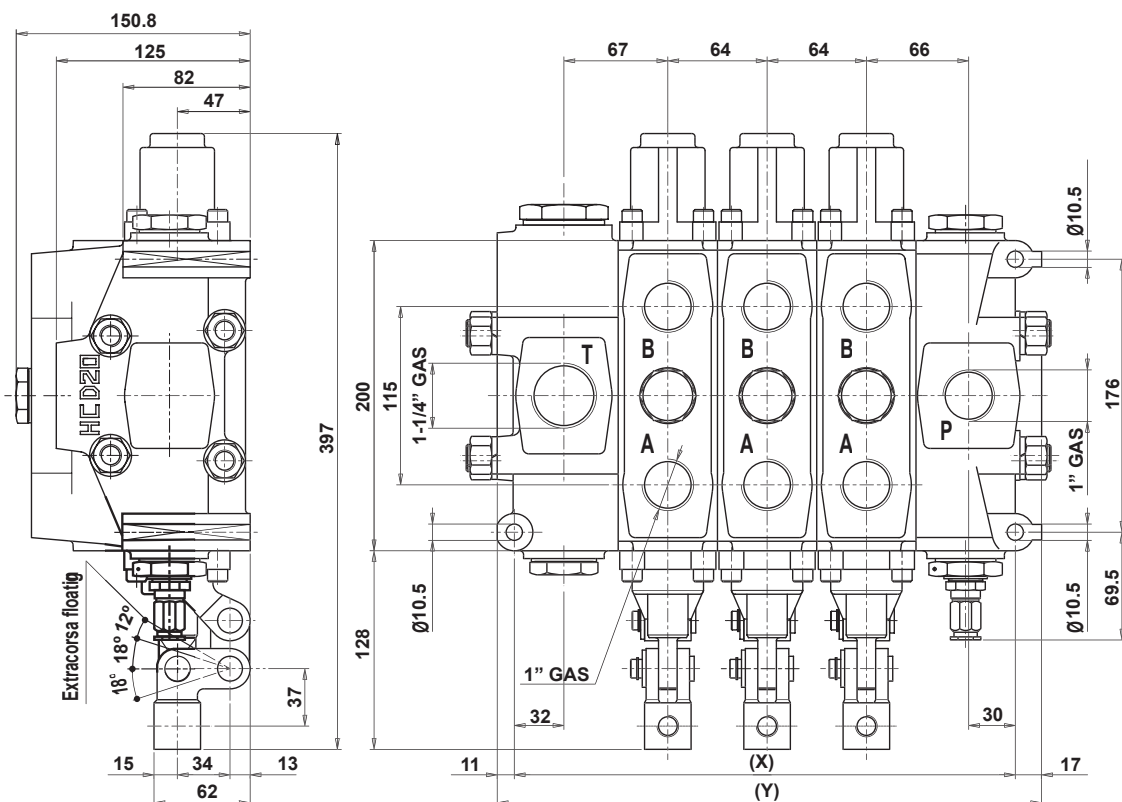
Stock No.	Model Code	Description	List Price
4256	IL009AG06	L.H. Inlet (c/w Inlet Relief Valve)	
2034	IR009AG006	R.H. Inlet (c/w Inlet Relief Valve)	
33726	BE009AG06	Mid Inlet Section	

HC-D20 Outlet Sections

Stock No.	Model Code	Description	List Price
19554	TNQG07	R.H. Outlet ('T' Port c/w HPC)	
17990	B FAG07	Mid Outlet	

HC-D20 Body Sections

Stock No.	Model Code	Description	List Price
5018	W001AH101	Parallel - Double Acting c/w Service Cavities	
18613	W001BH005	Parallel - Double Acting c/w Service Cavities - Hydraulic Pilot	
46106	W012AH101	Parallel - Float c/w Service Cavities	



No. of Sections		1	2	3	4	5	6	7	8	9	10	11	12
Variable Dimensions (mm)	X	195	259	323	387	451	515	579	643	707	771	835	899
	Y	223	287	351	415	479	543	607	671	735	799	863	927
	Z	248	312	376	440	504	568	632	696	760	824	888	952
Weight (kg)		28.7	39.6	50.6	61.6	72.6	83.5	94.5	105.5	116.4	127.4	138.4	149.4

**HC-D20 Options
and
Accessories
see Page 1.25**



HC-D25

Sectional Directional Control Valve Manually Operated Individual Inlets, Outlets and Sections

Recommended Maximum Flow		Recommended Maximum Pressure		Inlet/Outlet Port Size	Work Port Size
380 LPM	100 US GPM	350 BAR	5000 PSI	1-1/4" & 1-1/2" BSPP	1-1/4" BSPP
				1" & 1-1/4" Code 62	1-1/4" Code 62

HC-D25 Inlet Sections

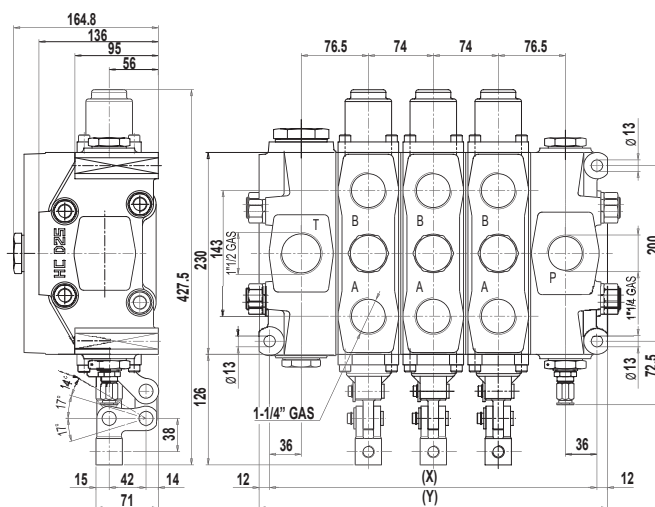
Stock No.	Model Code	Description	List Price
4436	IL009AG07	L.H. Inlet (c/w Relief Valve) 1-1/4" BSPP	
2557	IR009AG07	R.H. Inlet (c/w Relief Valve) 1-1/4" BSPP	
70913	IR009S36	R.H. Inlet (c/w Relief Valve) 1" Code 62 UNC	
74394	IR019S36	R.H. Inlet (c/w Relief Valve) 1" Code 62 UNC	
46104	BE009AG07	Mid Inlet (c/w Relief Valve)	

HC-D25 Outlet Sections

Stock No.	Model Code	Description	List Price
25613	TNQG08	R.H. Outlet (c/w HPC) 1-1/2" BSPP	
23183	TJAS37	L.H. Outlet (c/w HPC) 1-1/4" Code 62 UNC	
18552	BFAG08	Mid Outlet	

HC-D25 Body Sections

Stock No.	Model Code	Description	List Price
23532	W001AH101	Parallel - Double Acting c/w Cavities - Manual	
38866	W001AH114	Parallel - Double Acting c/w Cavities - Rotary	
34703	W001BH005	Parallel - Double Acting c/w Cavities - Hydraulic Pilot	
34703M	W002BH005	Parallel - Motor c/w Cavities - Hydraulic Pilot	
83392	W001BH005S36	Parallel - Double Acting c/w Cavities - Hydraulic Pilot 1" Code 62	
83395	W002BH005S36	Parallel - Motor c/w Cavities - Hydraulic Pilot 1" Code 62	
83393	W001BH005S36	Parallel - Double Acting c/w Port Relief - Hydraulic Pilot 1" Code 62	
83394	W002BH005S36	Parallel - Motor c/w Port Relief - Hydraulic Pilot 1" Code 62	



No. of Sections		1	2	3	4	5	6	7	8	9	10	11	12
Variable Dimensions (mm)	X	225	299	373	447	521	595	669	746	817	891	965	1039
	Y	249	323	397	471	545	619	693	767	841	915	989	1063
	Z	276	350	424	498	572	646	720	794	868	942	1016	1090
Weight (kg)		41.3	56.8	72.3	87.8	103.4	119	134.4	150	165.5	181	196.5	212

**HC-D25 Options
and
Accessories
see Page 1.25**



HC-D20 / D25

1

HC-D20 Options and Accessories

Stock No.	Model Code	Description	List Price
2382	2A	Relief Cartridge Pilot 40-400 Bar	
915040901	6A	Relief Cartridge External Pilot	
430109001	3A	No Relief Blanking Plug	
320708001	F001A	Spring Centre Assembly	
320808001	F002A	Detent Kit - 3 Position	
430509001	H101a	Lever M14x350	
320308001	H101	Handle Assembly Steel	
321108002	F022A	Pneumatic Pilot Kit - Proportional (per spool)	
321108003	F020A	Pneumatic Pilot Kit (per Spool)	
320508008	H005	Hydraulic Pilot Kit (one end only) 4-27 Bar	
915060908	01PA	Service Port, Relief Valve Cartridge 161-270 Bar	
915060909	01PA	Service Port, Relief Valve Cartridge 271-380 Bar	
915070802	04PA	Service Port, Relief/anti Cav Cartridge 131-220 Bar	
915070812	04PA	Service Port, Relief/anti Cav Cartridge 111-350 Bar	
430409001	05PA	Service Port Cavity Blanking Plug	
350909001		Seal Kit Section Face	
412010610		Spool O-Ring BS7210	

HC-D25 Options and Accessories

Stock No.	Model Code	Description	List Price
2382	2A	Relief Cartridge Pilot 40-400 Bar	
430109001	3A	No Relief Blanking Plug	
320709004	F001A	Spring Centre Assembly	
320809001	F002A	Detent Kit - 3 Position	
430509001	H101a	Lever M14x350	
320309001	H101	Handle Assembly Steel	
320509001	H005	Hydraulic Pilot Kit (one end only) 4-27 Bar	
915060908	01PA	Service Port, Relief Valve Cartridge 161-270 Bar	
915060909	01PA	Service Port, Relief Valve Cartridge 271-380 Bar	
915070802	04PA	Service Port, Relief/Anti Cav Cartridge 131-220 Bar	
915070812	04PA	Service Port, Relief/Anti Cav Cartridge 111-350 Bar	
430409001	05PA	Service Port Cavity Blanking Plug	
350909001		Seal Kit Section Face	
412010903		Spool O-Ring BS7217	



HC-D40

Sectional Directional Control Valve Manually Operated Individual Inlets, Outlets and Sections

Recommended Maximum Flow		Recommended Maximum Pressure		Inlet/Outlet Port Size	Work Port Size
700 LPM	185 US GPM	350 BAR	5000 PSI	2" BSPP	2" BSPP

HC-D40 Inlet Section

Stock No.	Model Code	Description	List Price
26573	IL009AG09	L.H. Inlet (c/w Inlet Relief Valve)	

HC-D40 Outlet Section

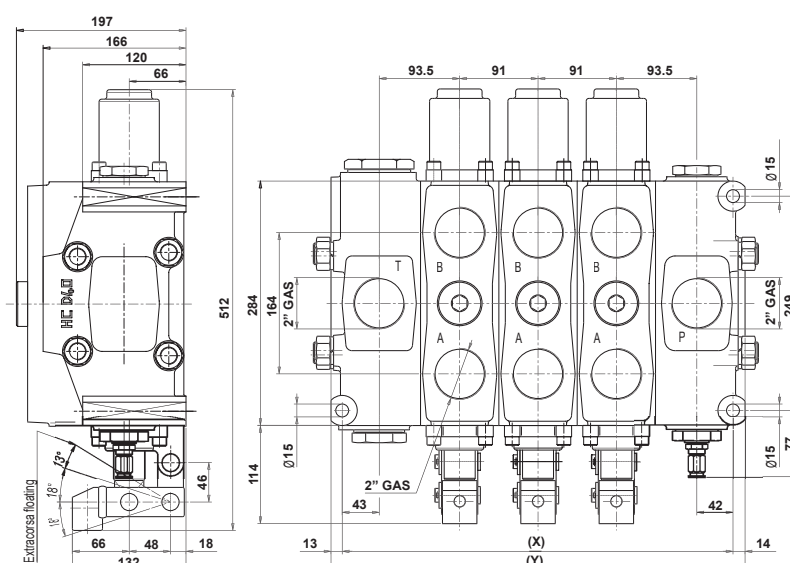
Stock No.	Model Code	Description	List Price
25625	TNQG09	R.H. Outlet ('T' Port c/w HPC)	

HC-D40 Body Sections

Stock No.	Model Code	Description	List Price
24195	W001AH101	Parallel - Double Acting c/w Service Cavities	
44820	W001BH005	Parallel - Double Acting c/w Service Cavities - Hydraulic Pilot	

HC-D40 Options and Accessories

Stock No.	Model Code	Description	List Price
320810001	F002A	Detent Kit - 3 Position	
SET	SET	Pre-set Relief Valve	
320510001	H005	Hydraulic Pilot Kit (*One end only - as spare part))	
25118	01PA (220)	Service Port, Relief Valve Cartridge	
50581	04PA (220)	Service Port, Combination Valve Cartridge	
915081001	02PA	Service Port, Anti-Cavitation Valve Cartridge	



No. of Sections		1	2	3	4	5	6	7	8	9	10	11	12
Variable Dimensions (mm)	X	272	363	454	545	636	727	818	909	1000	1091	1182	1273
	Y	299	390	481	572	663	754	845	936	1027	1118	1209	1300
	Z	334	425	516	607	698	789	880	971	1062	1153	1244	1355
Weight (kg)		75	104	133	162	191	220	249	278	307	336	365	394



Proportional NVD2

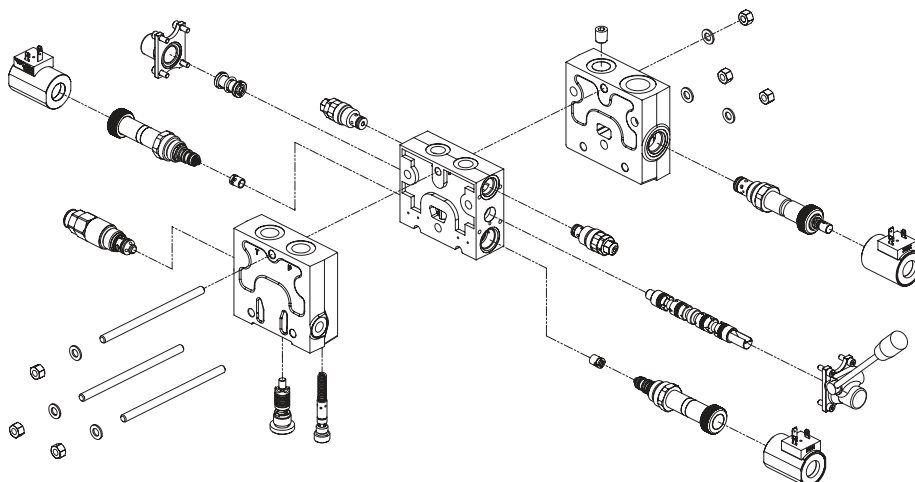


1

Sectional Directional Control Valve Manually Operated Individual Inlets, Outlets and Sections

NVD2 Options and Accessories

Stock No.	Model Code	Description	List Price
3207111307	03	Poppet 2 lpm	
3207111306	06	Poppet 6 lpm	
3207111309	09	Poppet 9 lpm	
3207111300	12	Poppet 12 lpm	
3207111308	18	Poppet 18 lpm	
3207111301	24	Poppet 24 lpm	
3207111302	36	Poppet 36 lpm	
3207111304	40	Poppet 40 lpm	
0PNV200004	XE	Electro Hydraulic Valve	
9275225000	XT	Cavity Plug	
095001191	M12D	Proportional Coil 12V DC	
095002191	M24D	Proportional Coil 24V DC	
9231400340	H00	No Lever Kit	
9228130357	H05	Lever Kit	
0022010000	C1	Service Port Relief Cartridge 20-100 Bar	
0022020000	C2	Service Port Relief Cartridge 40-220 Bar	
0022030000	C3	Service Port Relief Cartridge 50-350 Bar	
9273193600	TC	Cavity Plug	
9296081401		Tierod Kit NVD2/1	
9296081801		Tierod Kit NVD2/2	
9296082201		Tierod Kit NVD2/3	
9296082601		Tierod Kit NVD2/4	
9296083001		Tierod Kit NVD2/5	
9296083401		Tierod Kit NVD2/6	
9296083801		Tierod Kit NVD2/7	
9296084201		Tierod Kit NVD2/8	





Proportional HCMV99

Sectional Directional Control Valve Manually Operated Individual Inlets, Outlets and Sections

1

Recommended Maximum Flow		Recommended Maximum Pressure		Inlet/Outlet Port Size	Work Port Size
130 LPM	34 US GPM	420 BAR	6090 PSI	3/4" BSPP	1/2" BSPP

HCMV99 Inlet Sections

Stock No.	Model Code	Description	List Price
29224	MR019KVG05	Right Hand Inlet (Fixed Pump) c/w Cavities Plugged*	
20747	MR019JVG05	Right Hand Inlet (LS Variable Pump) c/w Cavities Plugged*	
HCMVIF03	ML019KVG05	Left Hand Inlet (Fixed Pump) c/w Cavities Plugged*	
HCMVIF04	ML019JVG05	Left Hand Inlet (LS Variable Pump) c/w Cavities Plugged*	
36195	ML001HVG05	Left Hand Inlet (Fixed Pump) c/w HPC	
61071	MIDINJVG05	Mid Inlet (LS Variable Pump) 200 LPM	
64899	1A	Direct Acting Relief Cartridge (50-200 Bar)	
64900	1A	Direct Acting Relief Cartridge (201-420 Bar)	
64901	3B	Pilot Operated Relief Cartridge (50-420 Bar)	
915045501	7B - 8B	Unloading Valve 12V DC	
915045502	7B - 8B	Unloading Valve 24V DC	
*Note: Add Relief or Unloading Cartridges			

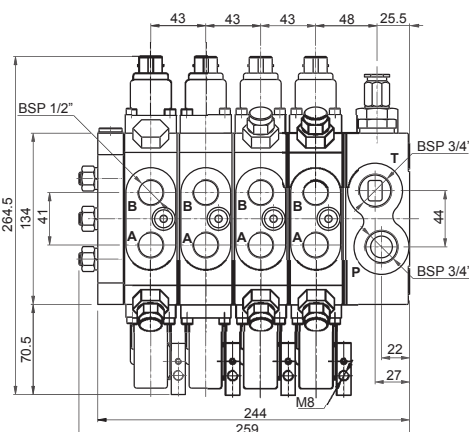
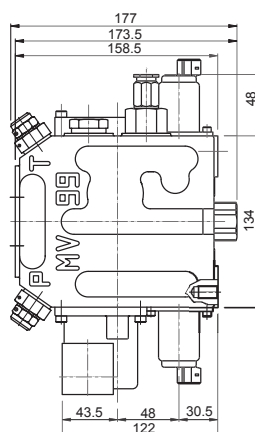
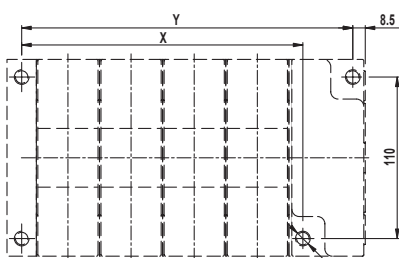
HCMV99 Body Sections

Stock No.	Model Code	Description	List Price
64685	W001CFFFFH402F001RC1G0405PA05PB	Compensated Double Acting c/w Cavities Manual	
9900*	W001C****H403F001RC1G0405PA05PB	Compensated Double Acting c/w Cavities Hydraulic Pilot	
9900*	W001C****H404F001RC1G0405PA05PB	Compensated Double Acting c/w Cavities Proportional 12V DC	
9900*	W001C****H405F001RC1G0405PA05PB	Compensated Double Acting c/w Cavities Proportional 24V DC	
64686	W001CFFFFH402F001RD1G0405PA05PB	Non Compensated Double Acting c/w Cavities Manual	

HCMV99 Outlet Sections

Stock No.	Model Code	Description	List Price
20615	KZ3	End Plate suit H402, H403	
20565	KZ4	End Plate suit H404, H405	
20955	KZ5	End Plate suit H402, H403	
20669	KZ6	End Plate suit H404, H405	

Fixing Specifications



Variable Dimensions

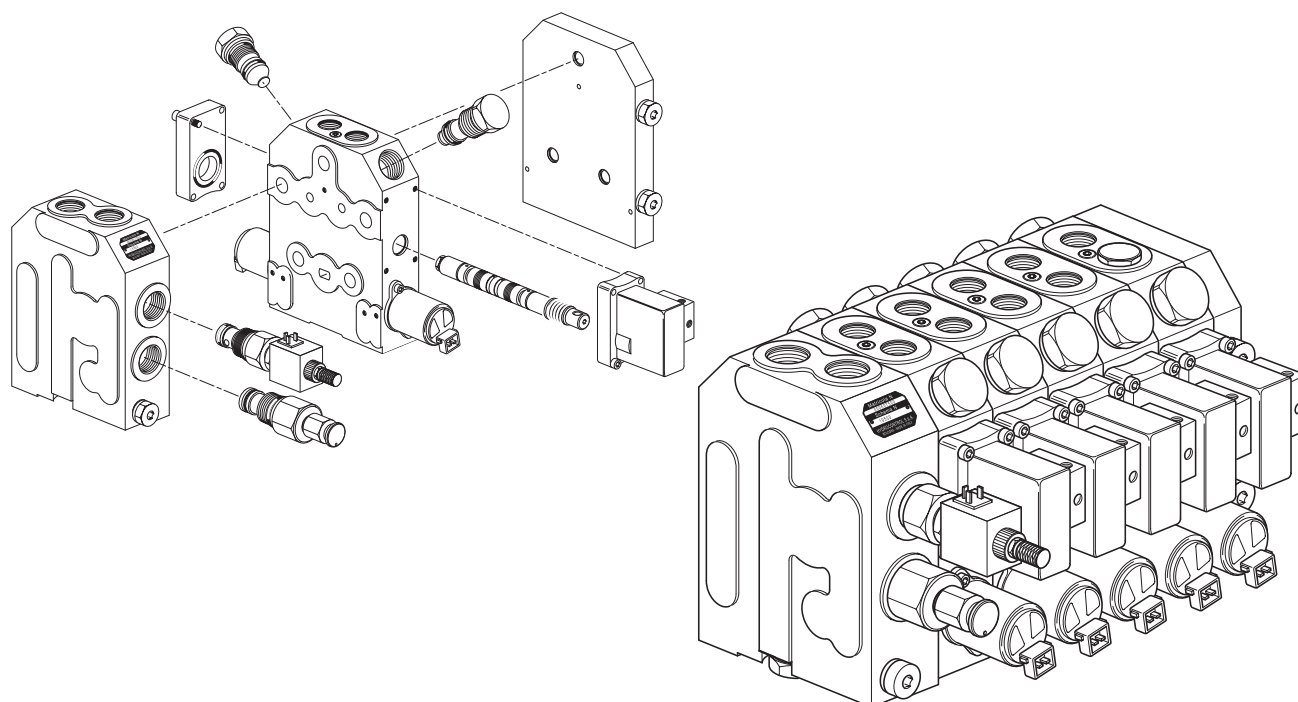
Type	MV99/1	MV99/2	MV99/3	MV99/4	MV99/5	MV99/6	MV99/7	MV99/8	MV99/9	MV99/10
X (mm)	62.5	105.5	148.5	191.5	234.5	277.5	320.5	363.5	406.5	449.5
Y (mm)	96.5	139.5	182.5	225.5	268.5	311.5	354.5	397.5	440.5	483.5

Proportional HCMV99

Sectional Directional Control Valve Manually Operated Individual Inlets, Outlets and Sections

HCMV99 Options and Accessories

Stock No.	Model Code	Description	List Price
320055005	KV to JV	Conversion Kit for Inlet Section (Fixed to Variable)	
320055021	JV to KV	Conversion Kit for Inlet Section (Variable to Fixed)	
430855001	H403	Hydraulic Pilot Kit (One end only)	
045500002	H402	Manual Handle Assembly	
430055004	H404	Proportional Electro Hydraulic 12V DC (One end only)	
430055003	H405	Proportional Electro Hydraulic 24V DC (One end only)	
64902	01PA	Service Port Relief Valve Cartridge (40-200 Bar)	
64903	01PA	Service Port Relief Valve Cartridge (201-420 Bar)	
64901	04PA	Service Port Relief/Anti Cavitation Cartridge (50-420 Bar)	
915085501	02PA	Anti Cavitation Cartridge	
421801128	H402 Spring	Spring to suit H402	
421801127	H403/4/5 Spring	Spring to suit H403, H404, H405	
430455001	05PA	Cavity Plugs	
99028	H403/4/5	Blanking Plug	
14299	Jet Conn	Connector - Junior Timer	
413000223	-	Connector & 2m Cable	
300155001	Single Tie Rod	Tie Rod MV99/1 (3 Required)	
300155002	Single Tie Rod	Tie Rod MV99/2 (3 Required)	
300155003	Single Tie Rod	Tie Rod MV99/3 (3 Required)	
300155004	Single Tie Rod	Tie Rod MV99/4 (3 Required)	
300155005	Single Tie Rod	Tie Rod MV99/5 (3 Required)	
300155006	Single Tie Rod	Tie Rod MV99/6 (3 Required)	



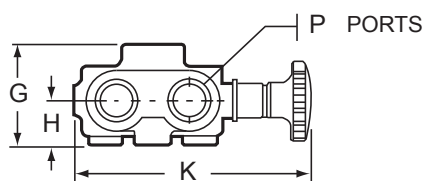
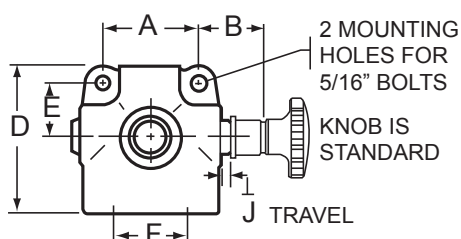


VS Series



Manually Operated 3 Port Selector Valve

Stock No.	Model Code	Recommended Maximum Flow		Recommended Max. Pressure		Port Size	List Price
128140	VS2BKLF2	75 LPM	20 US GPM	172 BAR	2450 PSI	1/2" NPT	
128142	VS2BKLF4			207 BAR	2950 PSI	3/4" UNO	
SS2A1D	Selector with Knob Handle	75 LPM	20 US GPM	172 BAR	2500 PSI	1/2" NPTF	
SS3A3D	Selector with Knob/Spring Offset					3/4" UNO	
128100	VS4BKLF6	150 LPM	40 US GPM	172 BAR	2450 PSI	3/4" NPT	
128101	VS4BKLF7			172 BAR	2450 PSI	1" NPT	
128092	VS4BKLF8			275 BAR	3950 PSI	1-1/16" UNO	
128103	VS4BKLF9			207 BAR	2950 PSI	1-5/16" UNO	

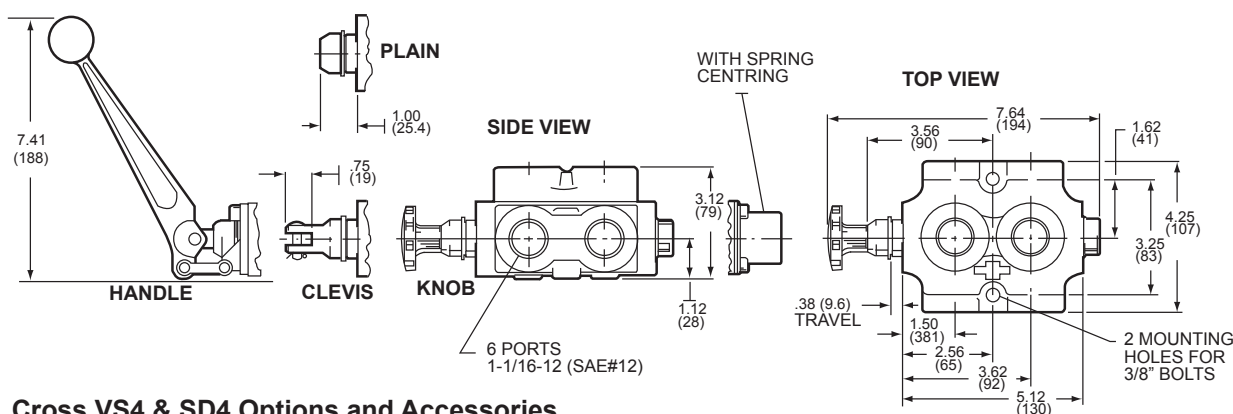


Model	VS2	VS4
A	54	76
B	39	40
D	82	105
E	30	38
F	41	54
G	57	66
H	25.4	28
J	7.9	9.6
K	135	155

SD Series

Manually Operated 6 Port Selector Valve

Stock No.	Model Code	Other Features	Recommended Maximum Flow		Recommended Max. Pressure		Port Size	List Price
129892	SD4BKLA1	--	150 LPM	40 US GPM	172 BAR	2450 PSI	1/2" NPT	
129870	SD4BKLA2	--			350 BAR	5000 PSI	3/4" UNO	
129907	SD4BKLA5	--					1-1/16" UNO	
129046	SD4BADA5	c/w Lever & Detent					1-1/16" UNO	
129118	SD4BKLB5	Series/Parallel					1-1/16" UNO	
129924	SD4BKLA7	--			310 BAR	4500 PSI	1-5/16" UNO	



Cross VS4 & SD4 Options and Accessories

Stock No.	Model Code	Description	List Price
1V0934	Code D	Detent Kit - 2 Position	
1V0932	Code B	Spring Return Kit	
1V0931	Code A	Handle Kit	
1V0633	Code G	Male Handle Adaptor	
1V0930	Code C	Female Clevis Kit	
1V1935S	Code US	Pilot Operating Kit - Steel, Pilot pressures: Min. 7 Bar, Max. 206 Bar	
1V1623		Steel Handle Kit	

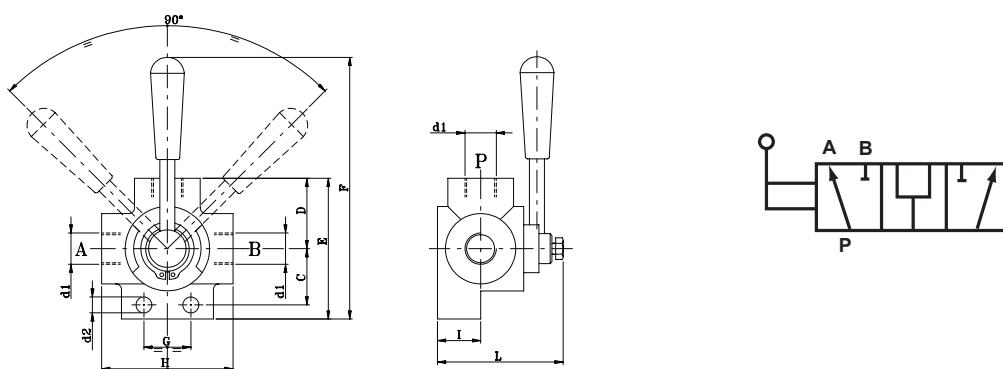


D3V Series

Manually Operated 3 Way Rotary Diverter Valve

1

Stock No.	Changeover	Recommended Maximum Flow		Recommended Max. Pressure		Port Size	List Price
D3V38	Open	50 LPM	13 US GPM	300 BAR	4350 PSI	3/8" BSPP	
D3V12	Open	80 LPM	21 US GPM	250 BAR	3625 PSI	1/2" BSPP	
D3V34	Open	120 LPM	31 US GPM	220 BAR	3190 PSI	3/4" BSPP	
D3V1	Open	180 LPM	47 US GPM	220 BAR	3190 PSI	1" BSPP	
D3V112	Open	280 LPM	73 US GPM	200 BAR	2900 PSI	1-1/2" BSPP	

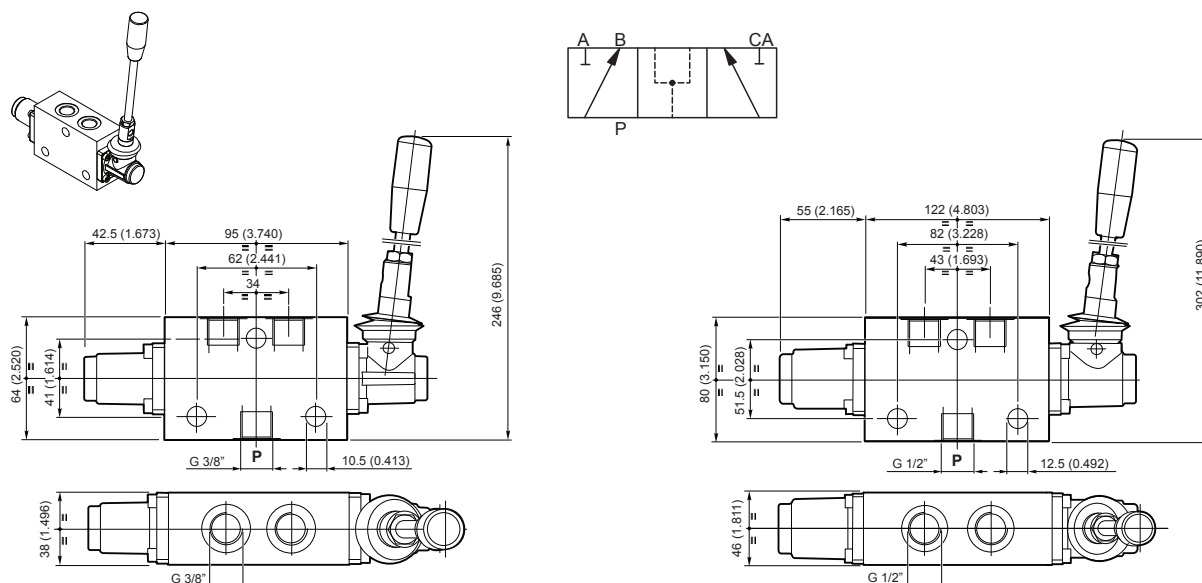


	Dimensions (mm)									
	d1	d2	C	D	E	F	G	H	I	L
D3V38	3/8" BSPP	8.5	31	36	78	152	24	73	21	62
D3V12	1/2" BSPP	8.5	36	43	96	173	30	85	24	70
D3V34	3/4" BSPP	10.5	41	47	101	179	32	91	28	80
D3V1	1" BSPP	10.5	50	51	115	194	32	98	31.5	90
D3V112	1-1/2" BSPP	10.5	80	64	144	240	42	128	44	160

IF Series

Manually Operated 3 Way Diverter Valve

Stock No.	Control	Recommended Maximum Flow		Recommended Max. Pressure		Port Size	List Price
IF381A1M421	Manual	35 LPM	9 US GPM	300 BAR	4350 PSI	3/8" BSPP	
IF381C3M421	Cam	35 LPM	9 US GPM	300 BAR	4350 PSI	3/8" BSPP	
IF121A1M421	Manual	70 LPM	18 US GPM	300 BAR	4350 PSI	1/2" BSPP	

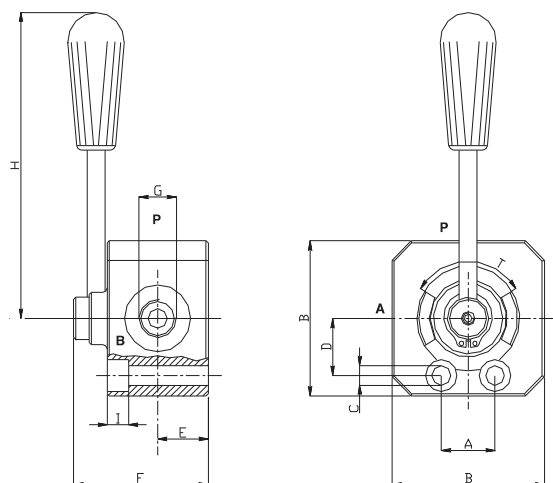




DDF3VAP Series

Manually Operated 3 Way Rotary Diverter Valve

Stock No.	Changeover	Recommended Maximum Flow		Recommended Max. Pressure		Port Size	List Price
DDF3VAP02A	Open	50 LPM	13 US GPM	450 BAR	6500 PSI	3/8" BSPP	
DDF3VAP03A	Open	80 LPM	21 US GPM	400 BAR	5800 PSI	1/2" BSPP	
DDF3VAP04A	Open	120 LPM	31 US GPM	350 BAR	5000 PSI	3/4" BSPP	
DDF3VAP05A	Open	180 LPM	47 US GPM	320 BAR	4600 PSI	1" BSPP	

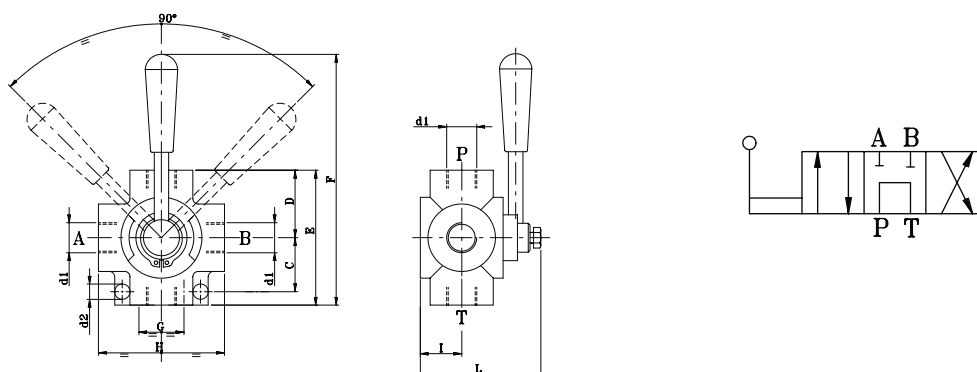


Dimension	A	B	C	D	E	F	G GAS	G NPT	G SAE	H	I	T°	Weight Kg
02	30	68	8.5	24.75	21	62	3/8	3/8	3/4-16	135	10.5	90	1.38
03	36.5	83	10.5	30	24	71	1/2	1/2	7/8-14	130	11.5	90	2.38
04	32	87	11	30.5	28	80	3/4	3/4	1 1/16-12	130	12	90	2.88
05	60	106	11	38	31.5	89	1	1	1 5/16-12	160	12	90	4.76

D4V Series

Manually Operated 4 Way Rotary Diverter Valve

Stock No.	Changeover	Recommended Maximum Flow		Recommended Max. Pressure		Port Size	List Price
D4V38CC	Closed	35 LPM	9 US GPM	250 BAR	3600 PSI	3/8" BSPP	
D4V38	Open	35 LPM	9 US GPM	250 BAR	3600 PSI	3/8" BSPP	
D4V12	Open	50 LPM	13 US GPM	250 BAR	3600 PSI	1/2" BSPP	
D4V34	Open	90 LPM	23 US GPM	220 BAR	3190 PSI	3/4" BSPP	



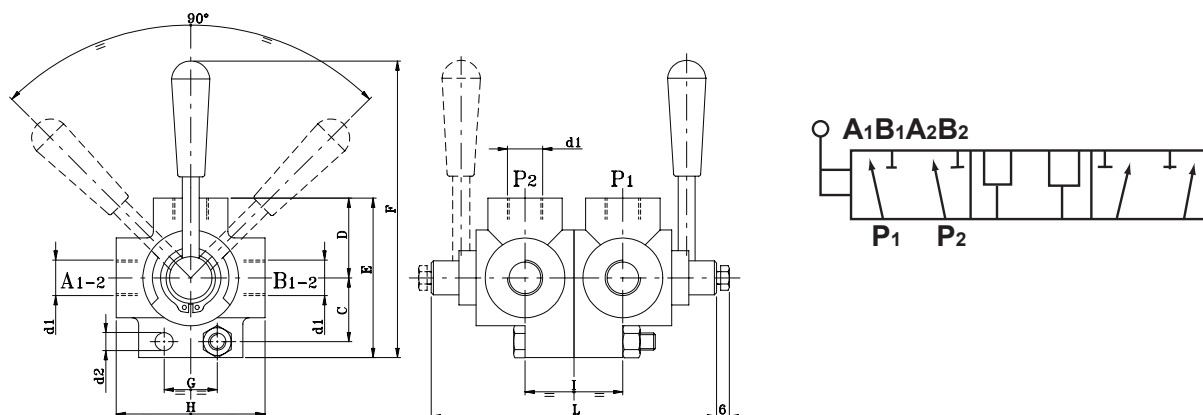
	Dimensions (mm)									
	d1	d2	C	D	E	F	G	H	I	L
D4V38	3/8" BSPP	8.5	27	38.5	77	148.5	54	77	24	71
D4V12	1/2" BSPP	8.5	32	45	90	165	68	90	28	80
D4V34	3/4" BSPP	8.5	38	47.5	95	172.5	74	95	32	93



D6V Series

Manually Operated 6 Way Rotary Diverter Valve

Stock No.	Changeover	Recommended Maximum Flow		Recommended Max. Pressure		Port Size	List Price
D6V38	Open	50 LPM	13 US GPM	315 BAR	4500 PSI	3/8" BSPP	
D6V12	Open	80 LPM	21 US GPM	280 BAR	4000 PSI	1/2" BSPP	
D6V34	Open	120 LPM	31 US GPM	250 BAR	3625 PSI	3/4" BSPP	
D6V1	Open	180 LPM	47 US GPM	220 BAR	3190 PSI	1" BSPP	

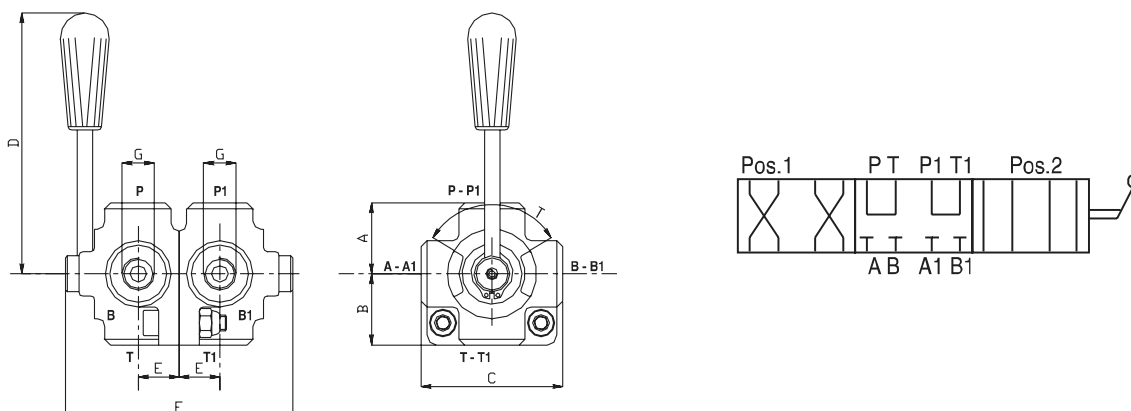


	Dimensions (mm)									
	d1	d2	C	D	E	F	G	H	I	L
D6V38	3/8" BSPP	8.5	31	36	78	152	24	73	42	124
D6V12	1/2" BSPP	8.5	36	43	96	173	30	85	48	140
D6V34	3/4" BSPP	11	56	46	102	186	32	91	56	160
D6V1	1" BSPP	11	64	49	113	224	42	98	63	180

D8V Series

Manually Operated 8 Way Rotary Diverter Valve

Stock No.	Changeover	Recommended Maximum Flow		Recommended Max. Pressure		Port Size	List Price
D8V38	Open	35 LPM	9 US GPM	300 BAR	4350 PSI	3/8" BSPP	
D8V12	Open	50 LPM	13 US GPM	250 BAR	3625 PSI	1/2" BSPP	
D8V34	Open	90 LPM	23 US GPM	220 BAR	3190 PSI	3/4" BSPP	



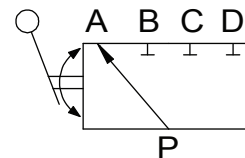
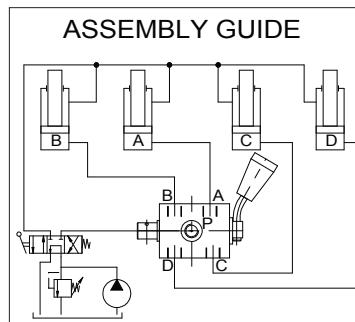
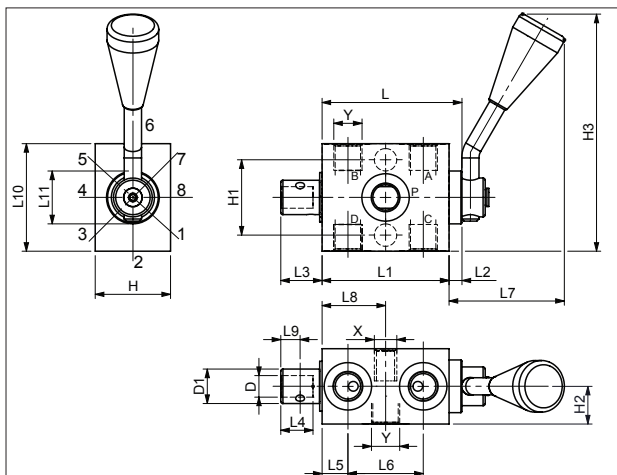
	Dimensions (mm)										
	A	B	C	D	E	F	G GAS	G NPT	G SAE	T°	Weight Kg
D8V38	38.5	38.5	77	130	24	142	3/8	3/8	3/4-16	90	2.50
D8V12	45	45	90	130	28	160	1/2	1/2	7/8-14	90	3.80
D8V34	47.5	47.5	95	160	32	180	3/4	3/4	1-1/16-12	90	5.20



Special Diverter Valves

Manually Operated 5 Way 8 Position

Stock No.	Changeover	Recommended Maximum Flow		Recommended Max. Pressure		Port Size	List Price
A1502010100	Closed	40 LPM	15 US GPM	700 BAR	10,000 PSI	1/4" BSPP	
A1504010300	Closed	70 LPM	20 US GPM	700 BAR	10,000 PSI	1/2" BSPP	

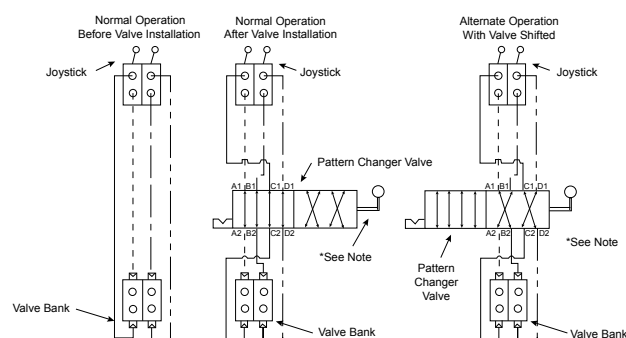
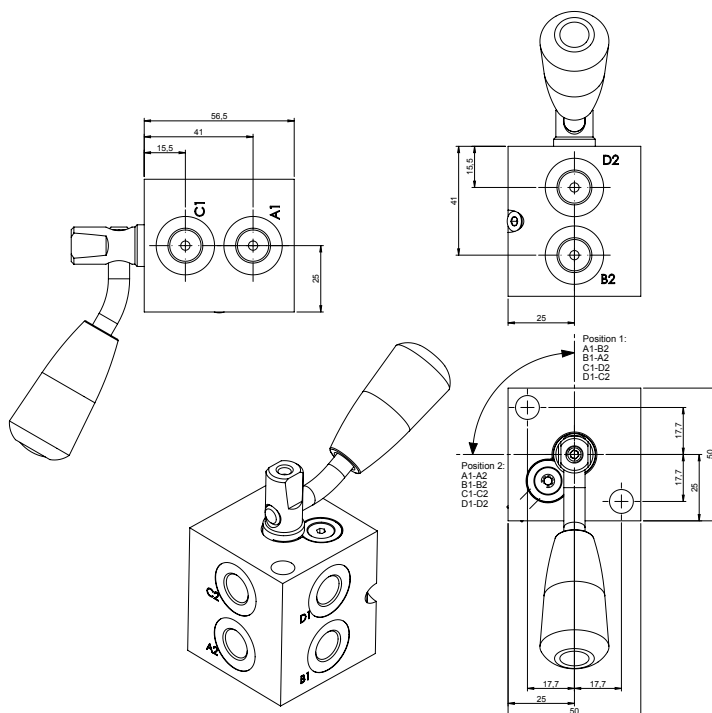


1	OPEN P → A	5	OPEN P → C
2	CLOSED	6	CLOSED
3	OPEN P → B	7	OPEN P → D
4	CLOSED	8	CLOSED

65	59	6	19	15	12	35	45	29.5	9	50	24.5	35	35	17.5	102.5	Ø10	Ø15.5	Ø4	M10	1/4" G	0.6 Kg
108	80	28	22	-	15	50	50	40	8	60	-	60	30	30	107.5	-	Ø14.5	Ø4	M10	1/2" G	2.3 Kg
L	L1	L2	L3	L4	L5	L6	L7	L8	L9	L10	L11	H	H1	H2	H3	D	D1	D2	X	Y	Weight

Manually Operated 8 Way 2 Position Pattern Changer

Stock No.	Changeover	Recommended Maximum Flow		Recommended Max. Pressure		Port Size	List Price
DP110244	Closed	20 LPM	7 US GPM	50 BAR	725 PSI	1/4" BSPP	



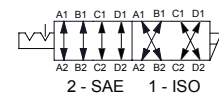
*NOTE:
Rotate valve handle 90 degrees to change joystick pattern.

Max. Pressure: 50 bar
Max. Flow: 20 l/min

Ports: G 1/4"

Position shown: 1 - ISO position

Zinc plated steel manifold

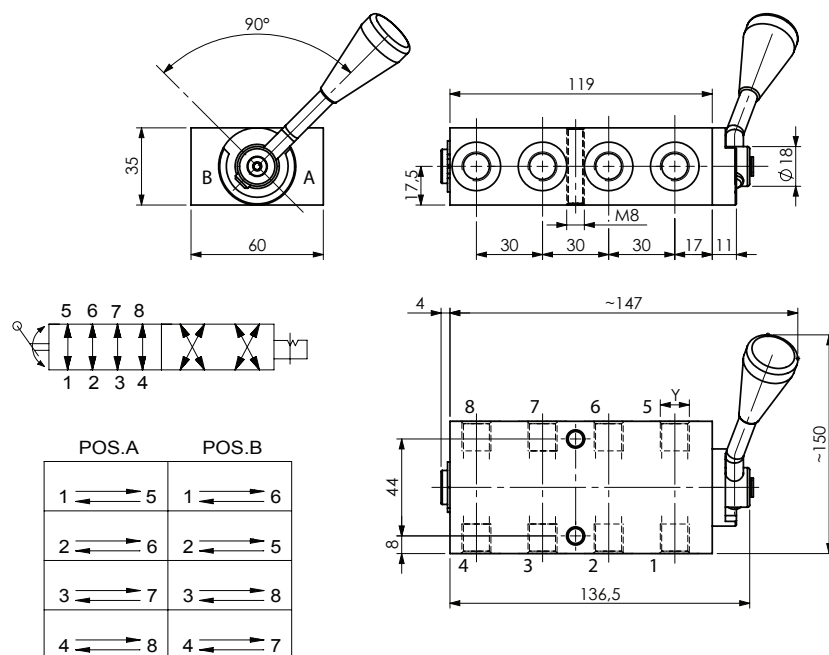




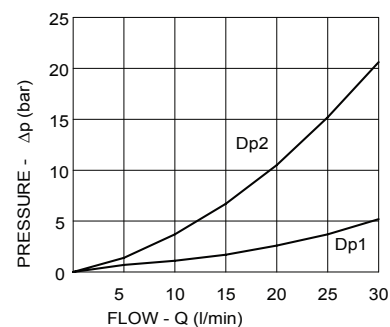
Special Diverter Valves

Manually Operated 8 Way 2 Position

Stock No.	Changeover	Recommended Maximum Flow		Recommended Max. Pressure		Port Size	List Price
A1502120100	Closed	30 LPM	11 US GPM	700 BAR	10,000 PSI	1/4" BSPP	



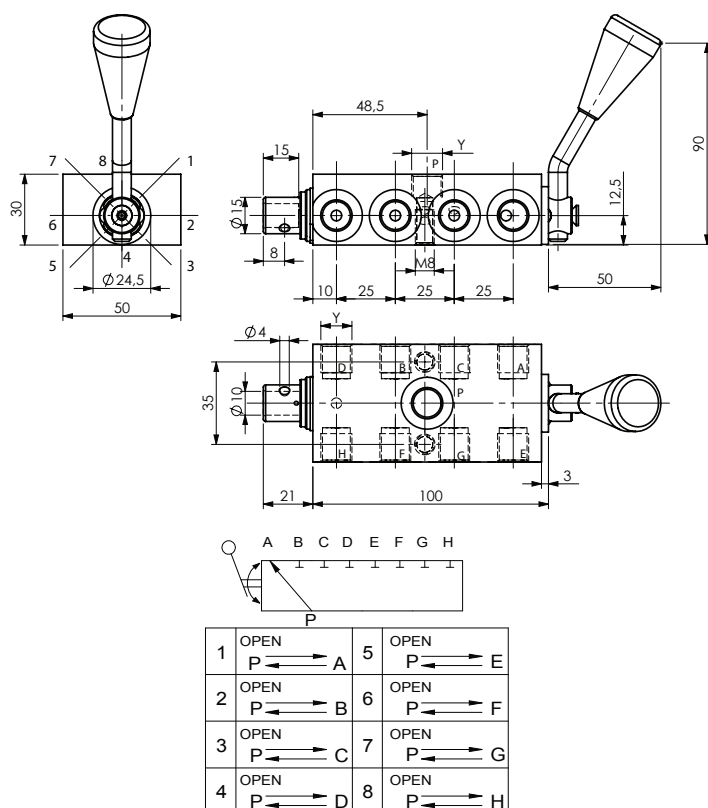
PERFORMANCE CURVES



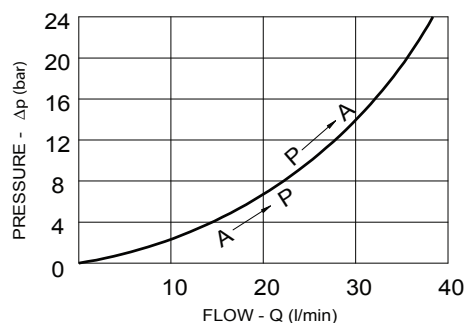
Dp1	Dp2
1 → 5	1 → 6
2 → 6	2 → 5
3 → 7	3 → 8
4 → 8	4 → 7

Manually Operated 9 Way 2 Position

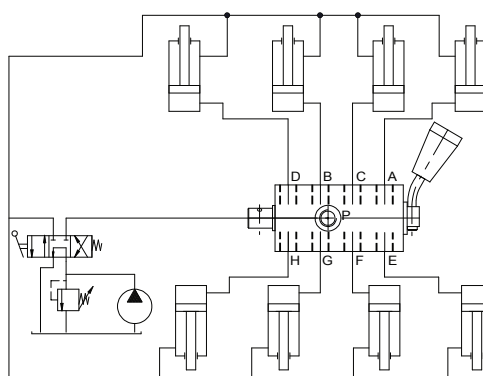
Stock No.	Changeover	Recommended Maximum Flow		Recommended Max. Pressure		Port Size	List Price
A1502020100	Closed	40 LPM	15 US GPM	700 BAR	10,000 PSI	1/4" BSPP	



PERFORMANCE CURVES



ASSEMBLY GUIDE





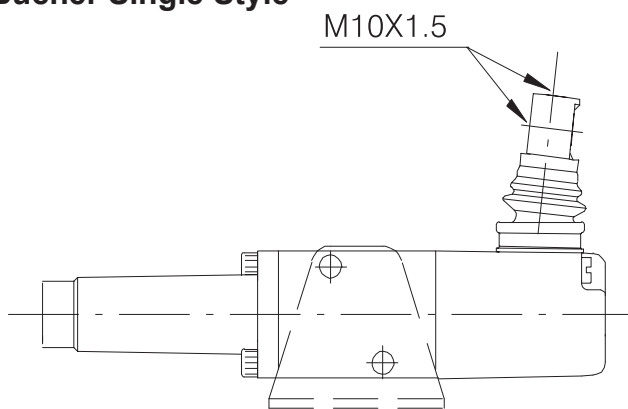
Cable Remote Controls

Controls

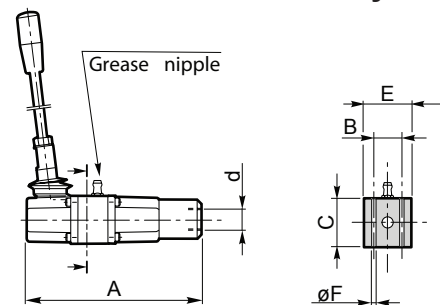
Stock No.	Type	Model	Description	List Price
760900130	Single	BUCHER	Remote Control Head	
760630190	Dual	BUCHER	'X' Axis Joystick Assembly	
03630SL03	Single	GALTECH	Remote Control Head Q35/Q45 only	
08630SL	Single	GALTECH	Remote Control Head Q75/Q95 only	
03631SLA15DU	Dual	GALTECH	'+' Axis Joystick Assembly	
212502	Single	MORSE	Remote Control Head *Use 292959*** Cable	
211711	Dual	MORSE	'+' Axis Joystick Assembly *Use 292959*** Cable	

1

Bucher Single Style

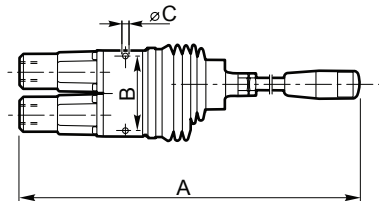


Galtech SL Style



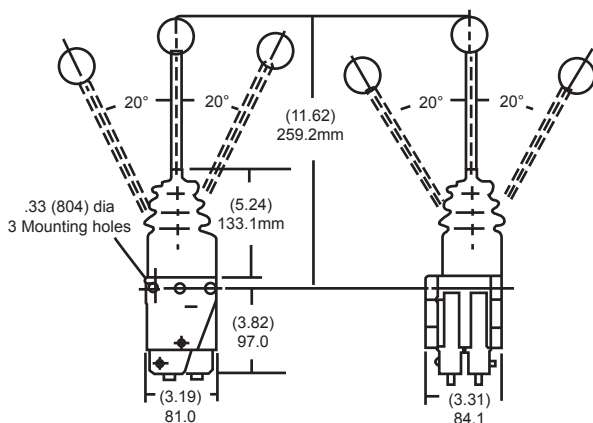
	A	B	C	d	E	F
Q25 - Q45	135 (5.315)	26 (1.024)	40 (1.575)	M16x1.5	38 (1.496)	5.5 (0.217)
Q75 - Q95	172 (6.772)	33.5 (1.319)	45 (1.772)		45 (1.772)	6.5 (0.256)

Galtech SLA15 Style

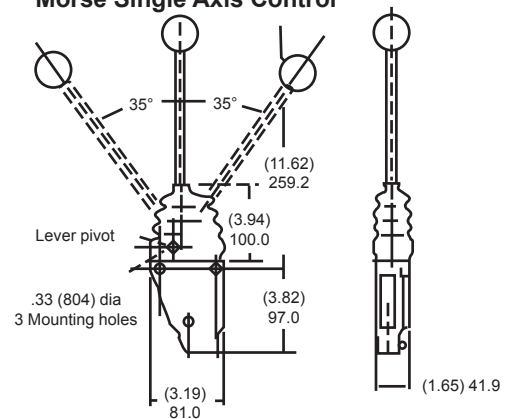


	A	B	Ø d
Q25 - Q45	358 (14.094)	77 (3.031)	6.5 (0.256)
Q75 - Q95			

Morse Dual Axis Control



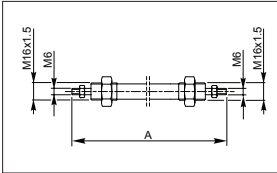
Morse Single Axis Control

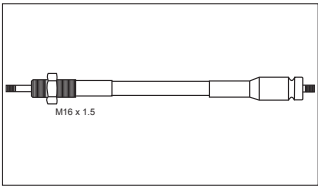




Cable Remote Controls

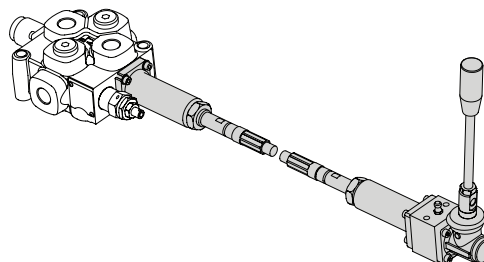
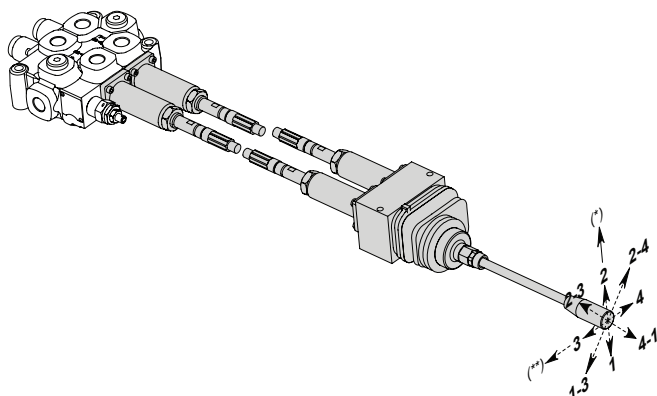
Cables to Fit Mobile Control Valves

Stock No.	Type	Model	Description	List Price
191636075	Universal	750mm		
191636100	Universal	1000mm		
191636125	Universal	1250mm		
191636150	Universal	1500mm		
191636175	Universal	1750mm		
191636200	Universal	2000mm		
191636250	Universal	2500mm		
191636300	Universal	3000mm		

Stock No.	Type	Model	Description	List Price
292959075	Morse	750mm		
292959100	Morse	1000mm		
292959125	Morse	1250mm		
292959150	Morse	1500mm		
292959175	Morse	1750mm		
292959200	Morse	2000mm		
292959250	Morse	2500mm		
292959300	Morse	3000mm		

Connector Kits

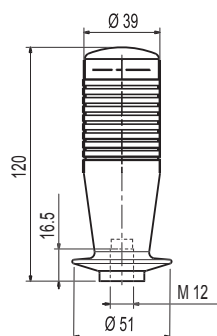
Stock No.	Brand	Model	Description	List Price
760900030	BUCHER	HDM140, HDM/S11	Valve Connector Kit M16 x 1.5	
760900010	BUCHER	HDM/S 15/18	Valve Connector Kit M16 x 1.5	
760900020	BUCHER	HDS 20/30	Valve Connector Kit M16 x 1.5	
660170037BA	CROSS	B, C, VS4, SD4	Valve Connector Kit M16 x 1.5	
03622A8	GALTECH	Q25, 35, 45	Valve Connector Kit M16 x 1.5	
08622A8	GALTECH	Q75, 95	Valve Connector Kit M16 x 1.5	
321927001	HYDROCONTROL	HCM45	Valve Connector Kit M16 x 1.5	
321904003	HYDROCONTROL	HCD4	Valve Connector Kit M16 x 1.5	
294255	OILPATH	OP10	Valve Connector Kit M16 x 1.5	
294336	OILPATH	OP20	Valve Connector Kit M16 x 1.5	
660170029	PRINCE	LVS	Valve Connector Kit M16 x 1.5	
660170030	PRINCE	LVT / LVR	Valve Connector Kit M16 x 1.5	
660170031	PRINCE	SV / RD4100	Valve Connector Kit M16 x 1.5	
660170035	PRINCE	Series 20	Valve Connector Kit M16 x 1.5	
660170037	PRINCE	RD500	Valve Connector Kit M16 x 1.5	



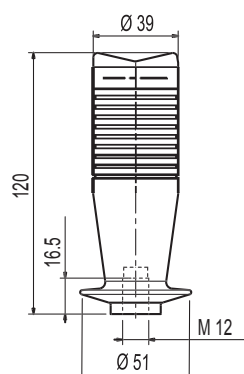
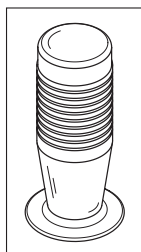


Hydraulic Remote Controls RCX

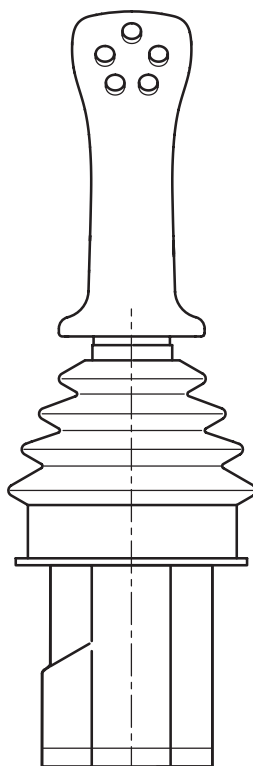
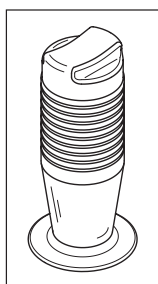
1



Handle Type 'A & B'



Handle Type 'C,D, E'



Handle Type 'F'

Technical Specifications

Maximum input pressure	100 bar
Maximum back pressure on tank line	3 bar
Oil input capacity	16 l/min
Hysteresis	0.9 bar
Hydraulic fluid	Mineral oil
Fluid temperature range	-20+80°C
Fluid viscosity range	10÷300 Cst
Recommended filtration	25 µ Absolute
Recommended operating pipes	8mm dia rigid, 1/4" BSP flexible
Body	Cast iron
Plunger	Stainless steel
Plunger guide	Brass

Handles Microswitch Breaking

Direct current	Load resistive 4.8A/30 VDC
Alternating current	Load resistive 1.5A/250 VAC
Protection	IP 40

RCX STYLE

Stock No.	Model Code	Description	Metering Curve	List Price
RCX01A01	HCRCX01A01MAAWA27RAG02	Hydraulic Remote Control Joystick	6 - 20 bar	
RCX01A02	HCRCX01A02MAAWA27RAG02	Hydraulic Remote Control Joystick	5 - 25 bar	
RCX01A03	HCRCX01A03MAAWA27RAG02	Hydraulic Remote Control Joystick	2 - 13 bar	
RCX01A04	HCRCX01A06MAAWA27RAG02	Hydraulic Remote Control Joystick	6 - 40 bar	
RCX01A05	HCRCX01A05MAAWA27RAG02	Hydraulic Remote Control Joystick	0 - 64 bar	
RCX01A06	HCRCX01A06MAAWA27RAG02	Hydraulic Remote Control Joystick	4 - 17 bar	
RCX01A07	HCRCX01A07MAAWA27RAG02	Hydraulic Remote Control Joystick	5 - 15 bar	
RCX01A08	HCRCX01A08MAAWA27RAG02	Hydraulic Remote Control Joystick	2 - 18 bar	
RCX01A09	HVRCX01A09MAAWA27RAG02	Hydraulic Remote Control Joystick	5 - 20 bar	
RCX01C01	HCRCX01A10MAAWA27RAG02	Hydraulic Remote Control Joystick	2 - 15 bar	

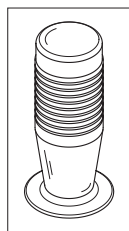
RCX Options and Accessories

Stock No.	Model Code	Description	List Price
RCXAWA27	Type A	Handle without Microswitch (Standard)	
RCXBAW27	Type B	Handle with Microswitch to Close	
RCXDWA27	Type D	Handle with Dual Microswitch	
RCXDWB52	Type D 15°	Handle with Dual Microswitch 15° Angle	

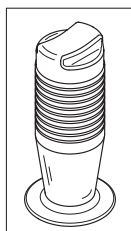


Hydraulic Remote Controls RCM

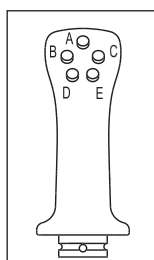
1



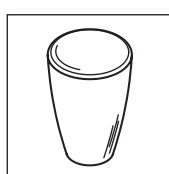
Handle Type 'A & B'



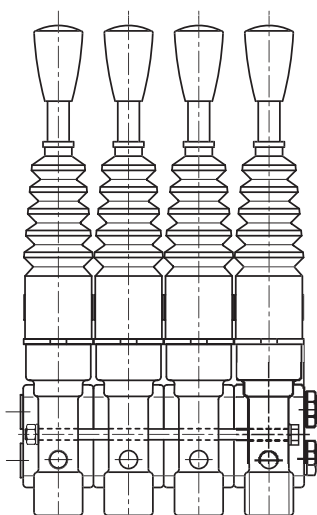
Handle Type 'C, D, E'



Handle Type 'F'



Type M



Technical Specifications

Maximum input pressure	100 bar
Maximum back pressure on tank line	3 bar
Oil input capacity	16 l/min
Hysteresis	0.9 bar
Hydraulic fluid	Mineral oil
Fluid temperature range	-20+80°C
Fluid viscosity range	10+300 Cst
Recommended filtration	25 µ Absolute
Recommended operating pipes	8mm dia rigid, 1/4" BSP flexible
Body	Cast iron
Plunger	Stainless steel
Plunger guide	Brass

Handles Microswitch Breaking

Direct current	Load resistive 4.8A/30 VDC
Alternating current	Load resistive 1.5A/250 VAC
Protection	IP 40

RCM STYLE

Stock No.	Model Code	Description	Metering Curve	List Price
RCM101A01	HCRCM101A01MAMWE95RAG02	Hydraulic Remote Control Single	6 - 20 bar	
RCM101A02	HCRCM101A02MAMWE95RAG02	Hydraulic Remote Control Single	5 - 25 bar	
RCM101A03	HCRCM101A03MAMWE95RAG02	Hydraulic Remote Control Single	2 - 13 bar	
RCM101A04	HCRCM101A04MAMWE95RAG02	Hydraulic Remote Control Single	6 - 40 bar	
RCM101A05	HCRCM101A05MAMWE95RAG02	Hydraulic Remote Control Single	0 - 64 bar	
RCM101A06	HCRCM101A06MAMWE95RAG02	Hydraulic Remote Control Single	4 - 17 bar	
RCM101A07	HCRCM101A07MAMWE95RAG02	Hydraulic Remote Control Single	5 - 15 bar	
RCM101A08	HCRCM101A08MAMWE95RAG02	Hydraulic Remote Control Single	2 - 18 bar	
RCM101A09	HCRCM101A09MAMWE95RAG02	Hydraulic Remote Control Single	5 - 20 bar	
RCM101C01	HCRCM101C01MAMWE95RAG02	Hydraulic Remote Control Single	2 - 15 bar	
RCM102***	HCRCM102***MAMWE95RAG02	Hydraulic Remote Control Single Detent Pos. 1 & 2		
RCM103***	HCRCM103***MAMWE95RAG02	Hydraulic Remote Control Single Detent Pos. 1		
RCM104***	HCRCM104***MAMWE95RAG02	Hydraulic Remote Control Single Detent Pos. 2		
RCM105***	HCRCM105***MAMWE95RAG02	Hydraulic Remote Control Single Security Handle		
RCM106***	HCRCM106***MAMWE95RAG02	Hydraulic Remote Control Single Friction Detent		
RCM107***	HCRCM107***MAMWE95RAG02	Hydraulic Remote Control Single Security & Friction		
RCM108***	HCRCM108***MAMWE95RAG02	Hydraulic Remote Control Single Security & Detent Pos. 1 & 2		
RCM112***	HCRCM112***MAMWE95RAG02	Hydraulic Remote Control Single Security & Microswitch		

*** Denotes Metering Curve e.g. A01 (6 - 20 Bar)

RCM Options and Accessories

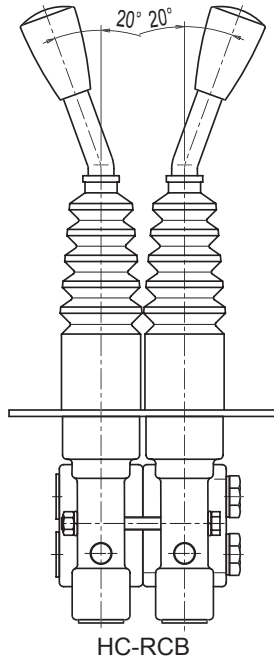
Stock No.	Model Code	Description	List Price
RCMMWE70	Type M	Handle with Lens	
RCMBWA70	Type B	Handle with Microswitch to Close	
RCMDWA70	Type D	Handle with Dual Microswitch	

Note: Handle Type A, B, C, D, E, F available for HCRCM 1 only (Not suitable for Multi Section Assembly)



Hydraulic Remote Controls RCB

1



Technical Specifications

Maximum input pressure	100 bar
Maximum back pressure on tank line	3 bar
Oil input capacity	16 l/min
Hysteresis	0.9 bar
Hydraulic fluid	Mineral oil
Fluid temperature range	-20+80°C
Fluid viscosity range	10÷300 Cst
Recommended filtration	25 µ Absolute
Recommended operating pipes	8mm dia rigid, 1/4" BSP flexible
Body	Cast iron
Plunger	Stainless steel
Plunger guide	Brass

Handles Microswitch Breaking

Direct current	Load resistive 4.8A/30 VDC
Alternating current	Load resistive 1.5A/250 VAC
Protection	IP 40

RCB STYLE

Stock No.	Model Code	Description	Metering Curve	List Price
RCB01A02	HCRCB01A02MAMWP10002A02MAMWP100RAG02	Hydraulic Remote Control Double	5 - 25 bar	
RCB01A04	HCRCB01A04MAMWP10002A04MAMWP100RAG02	Hydraulic Remote Control Double	6 - 40 bar	
RCB01***	HCRCB01***MAMWP10002***MAMWP100RAG02	Hydraulic Remote Control Double	-	

*** Denotes Metering Curve e.g. A01 (6 - 20 Bar)

Hydraulic Remote Controls RCF

(Catalogue Ref: Yellow)

RCF STYLE

Stock No.	Model Code	Description	Metering Curve	List Price
RCF04SA01	HCRCF04SA01MARAG02	Hydraulic Remote Control Foot Pedal	6 - 20 bar	
RCF04SA02	HCRCF04SA02MARAG02	Hydraulic Remote Control Foot Pedal	5 - 25 bar	
RCF04S***	HCRCF04S***MARAG02	Hydraulic Remote Control Foot Pedal	-	

*** Denotes Metering Curve e.g. A01 (6 - 20 Bar)

